

Welcome Building Coordinators!

Monthly Building Coordinator Meeting Via ZOOM

April 20, 2022



Agenda--Welcome!

- **Signage in Building Restrooms-Andy Bruckner, FM Director Custodial Services-5 minutes**
- **Earth Month, Bees, & More —Beth Mackenzie, Sustainability Program Manager, Office of Sustainability and the Environment-20 minutes**
- **Risk Management, Insurance, and Loss Prevention—Josey Bathke, Director and Emily Robnett, Risk Management Administrator—30 minutes**
- **Question and Answer**

Earth Month, Bees, & More

Beth MacKenzie

Office of Sustainability and the Environment

Office of Sustainability and the Environment

→ Moved from FM to CLAS in 2018

→ Current Priorities

- Support students via:
 - Expanding sustainability curriculum
 - Providing internships
 - Expanding student research opportunities
 - Engaging student orgs
- Support faculty via:
 - Facilitating research opportunities
 - Expanding living laboratories on campus
- Support campus partners via:
 - Hosting or collaborating on sustainability events and outreach activities
 - Providing sustainability consultation and technical assistance
 - Launching the 2030 campus sustainability goals



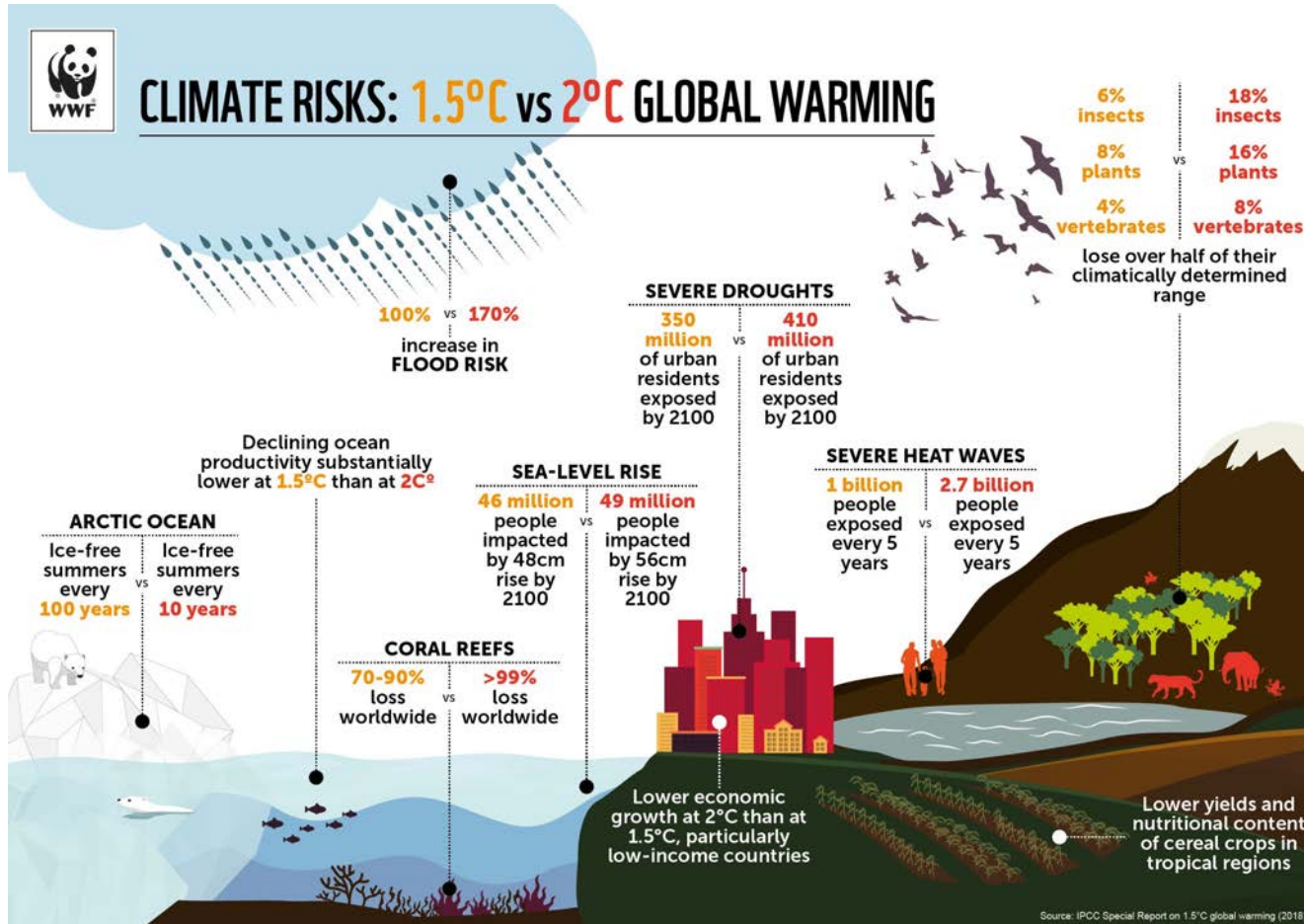
Sustainability

→ A philosophy that provides us a way to think about what it takes to live well today without compromising the ability of our children and grandchildren to do the same

- Centering people
- Going beyond recycling and turning off the lights
- Systems thinking approach



Why Prioritize Sustainability?



- Intergovernmental Panel on Climate Change (IPCC) Sixth Assessment Report
 - Released 8/9/2021

What Can We Do?

- Learn more about sustainability
 - Sustainable Development Goals (SDGs) <https://sdgs.un.org/goals>
- Take individual action
 - Find ways to lessen the negative impacts of your actions at work and at home
- Support local initiatives
- Support state, national, and global action



IOWA

Office of Sustainability
and the Environment

APRIL IS Earth Month



Find events at sustainability.uiowa.edu

→ 50 Years of Earth Day at UI

- <https://storymaps.arcgis.com/stories/682edf476fb84553b4dd96c56bdec01b>

IOWA

Office of Sustainability and the Environment

Earth Month

→ So far...

- Corporate Climate Responsibility Seminar
- Litter Panel Discussion
- 26th Annual Powwow
- 2022 Local Foods Roundtable
- Earth Expo
- **One Sustainable Iowa Student Conference**
- Frontier Co-op Case Competition
- Social Impact of Business Seminar Series
- Bike Safety and Registration
- Global Energy Trends & Transition with Dr. Michael Webber
- Bike Tune Up
- Geographical & Sustainability Sciences Grad School Lunch & Learn
- Intersectional Environmentalist Book Talk with Leah Thomas



Earth Month

→ Still to come...

- Our Journey with Trees Exhibition Spotlight (TODAY AT NOON)
- Human Rights & Climate Change Seminar Series (TODAY AT NOON)
- Hawkeye Decarbonization Summit (4/21-4/22)
- Earth Day Celebration (4/22)
- Pentacrest Tree Tours (4/22)
- Earth Day Fashion Show (4/22)
- Earth Day 5K (4/23)
- IRL Earth Day Litter Pickup (4/23)
- Earth Month Trash Crawl (4/24)
- **City Nature Challenge (4/29-5/2)**
- Planting of the Anne Frank Tree (4/29)
- How Can We SHIFT Consumers to Act More Sustainably (4/29)



HUMAN RIGHTS AND CLIMATE CHANGE
UI Center for Human Rights
Spring Webinar Series

Zoom ID: 943 6957 1045

Noon - 1pm (CST)
on Wednesdays:

- 2/16 Evolution of Science & Policy
- 3/30 Intergenerational Rights & Duties
- 4/20 The Global South & Unequal Burdens
- 5/11 Iowa's Challenges & Opportunities

IOWA
Center for Human Rights

Hawkeye Decarbonization Summit 2022
April 21, 10:30am - 5:00pm in the IMU Second Floor Ballroom
April 22, 9:00am - Noon in the Old Capitol Senate Chambers

Keynote Speaker Saul Griffith - founder and chief scientist of Otherlab

The event will be held both in person and virtually.
It is free and open to the public, but registration is required.

For more information, please visit:
www.ppc.uiowa.edu/decarb2022

IOWA





IT'S EASY TO PARTICIPATE

Download the iNaturalist app and make an account

Take photos of WILD plants & animals

Upload your discoveries to iNaturalist

sustainability.uiowa.edu/city-nature-challenge

IOWA

TAKE THE CITY NATURE CHALLENGE

April 29-May 2



Learn more



Individuals with disabilities are encouraged to attend all University of Iowa-sponsored events. If you are a person with a disability who requires a reasonable accommodation in order to participate in this program, please contact the Office of Sustainability and the Environment in advance at sustainability@uiowa.edu.

IOWA

Office of Sustainability and the Environment

Bee Campus USA

→ Xerces Society Initiative

- Conserve native pollinators by providing them with healthy habitat rich in native plants, nest sites, and protected from pesticides

→ Requirements

- Form a committee
- Letter of commitment
- Native plant list and vendors
- Integrated Pest Management Plan
- Educate
- Service-learning



Bee Campus USA

→ Official Bee Campus

- March 24, 2022



→ Next Steps

- Identify current pollinator habitat on campus
- Expand pollinator habitat
- Increase pollinator education and engagement opportunities
- Develop IPM recommendations for UI landscape management contractors



Dey House Rain Garden Project 2019
Er Wynn, Elizabeth Fischer, and Abbey Teu



111 Church Rain Garden Project

Abbie Dirks, Nicole Liljestrand, Nick Ni, and Cole Scholten

THANK YOU!



Risk Management overview

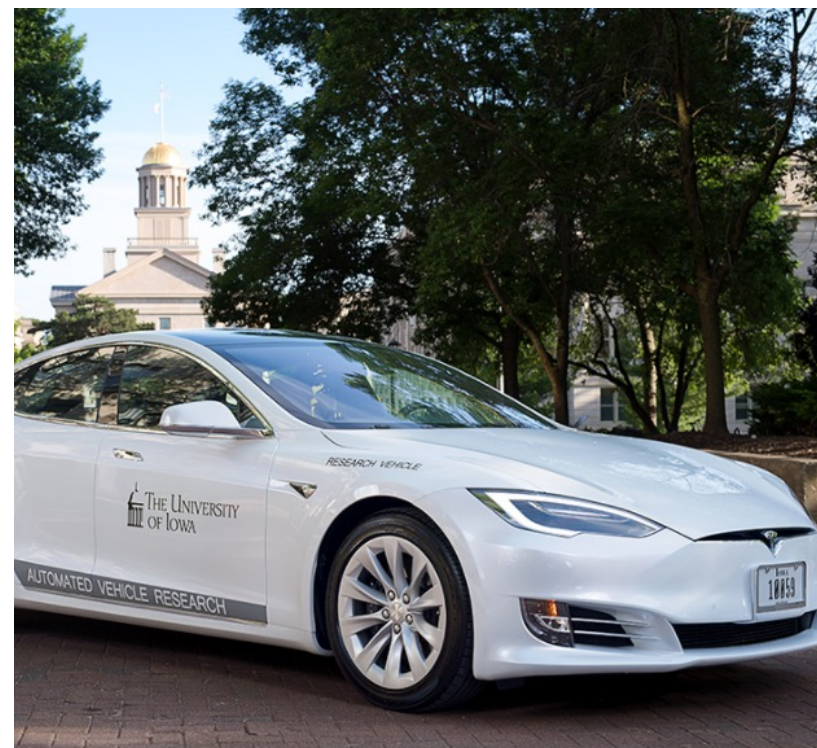
Risk Management, Insurance, and Loss Prevention

2022

Risk Management Role

Mission Statement

To Minimize the risk of financial loss to the University through the identification and analysis of risk, implementation of loss control programs, contractual risk transfer, or other risk reduction or financing techniques.





We are not the office of "no".

Risk Management Services

- Insurance Program
- Claims Administration & Forms
- Fleet Safety Program
- Event Risk Management
- Risk Consulting

University Insurance Program

\$11 BILLION IN INSURED ASSETS

\$6.2 BILLION IN BUILDING INSURED

\$2.5 BILLION IN BUILDING CONTENTS

\$2.3 BILLION IN INCOME

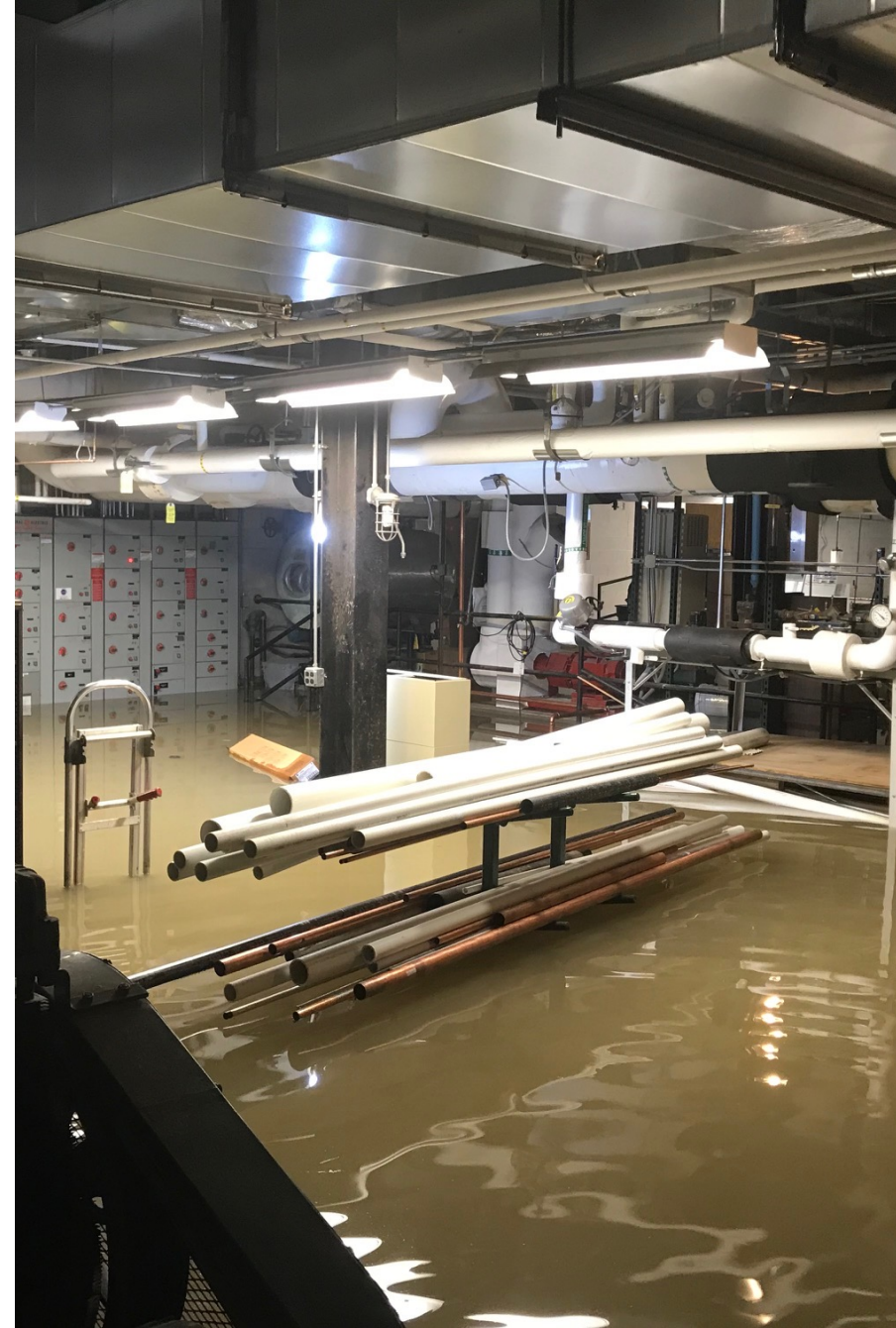
University Insurance Program



- Master Property Policy
- Fine Art
- Crime – Employee Theft
- Student Professional Liability
- Motor Vehicle Self Insurance Program
- Liability (State Tort Claims Act)

Claims administration

- Liability
- General Fund Property Damage
 - Over \$5,000
 - Report within 24 hours
 - BOR notified
- Vehicle Accidents
- FEMA



Claim Reporting Forms

- Property Loss Report
 - University Property Damaged
- Vehicle Accident Report
 - Accidents involving university vehicles or drivers on university business
- Incident Report Form
 - All other incidents on campus, accidents, slip & falls, near misses, etc.
- State Appeal Board Claim Form
 - Injury or damage to others

<https://riskmanagement.fo.uiowa.edu/forms>

University Driving Policy

→ Authorized Use of Vehicles

- University Business
- No personal use

→ Eligible Drivers

→ Eligible Passengers

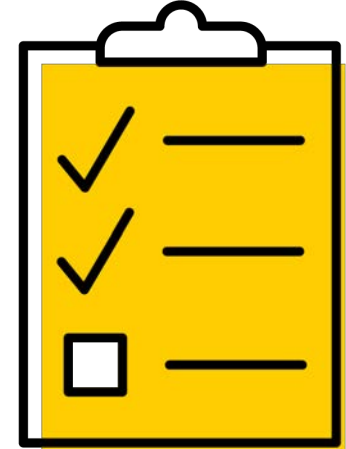
→ <https://opsmanual.uiowa.edu/administrative-financial-and-facilities-policies/risk-management-insurance-and-loss-prevention-5>

Authorized Drivers

→ Must Meet University Driving Policy Standards

→ If any of the following are true...not authorized

- Conviction of or pled guilty to reckless driving; driving with a suspended, denied, revoked, or barred license; hit and run; or leaving the scene; or
- License denied, canceled, suspended, revoked, disqualified, or barred; or
- Conviction of or pled guilty to driving while under the influence of alcohol or drugs, vehicular homicide, or any driving offense punishable as a felony;
- Three or more moving violations



Event risk management

- University events
- Student org events
- Field trips
- Waiver and Release Forms
- Special event insurance



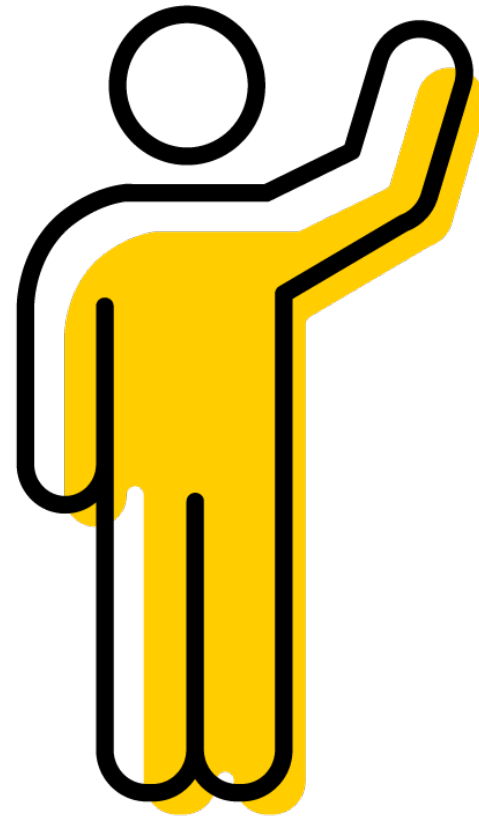
Risk consulting

- Risk identification and analysis
- Insurance requirements in contracts
- Certificates of self-insurance
- University committees



Risk management in the community

- Committees
- Classroom guest lectures
- Volunteering
- Lab safety and minors
- Travel advisory committee



Questions?

→ 319-335-0010

→ Email: risk-management@uiowa.edu

→ Website: <https://uiowa.edu/riskmanagement/>

Next Meeting:



Wednesday, May 18, 2022 11:00 – Noon via ZOOM

IOWA

Thank you!