

# *Campus Planning & Project Updates*



*Summer 2019*



# Agenda

Process Improvement

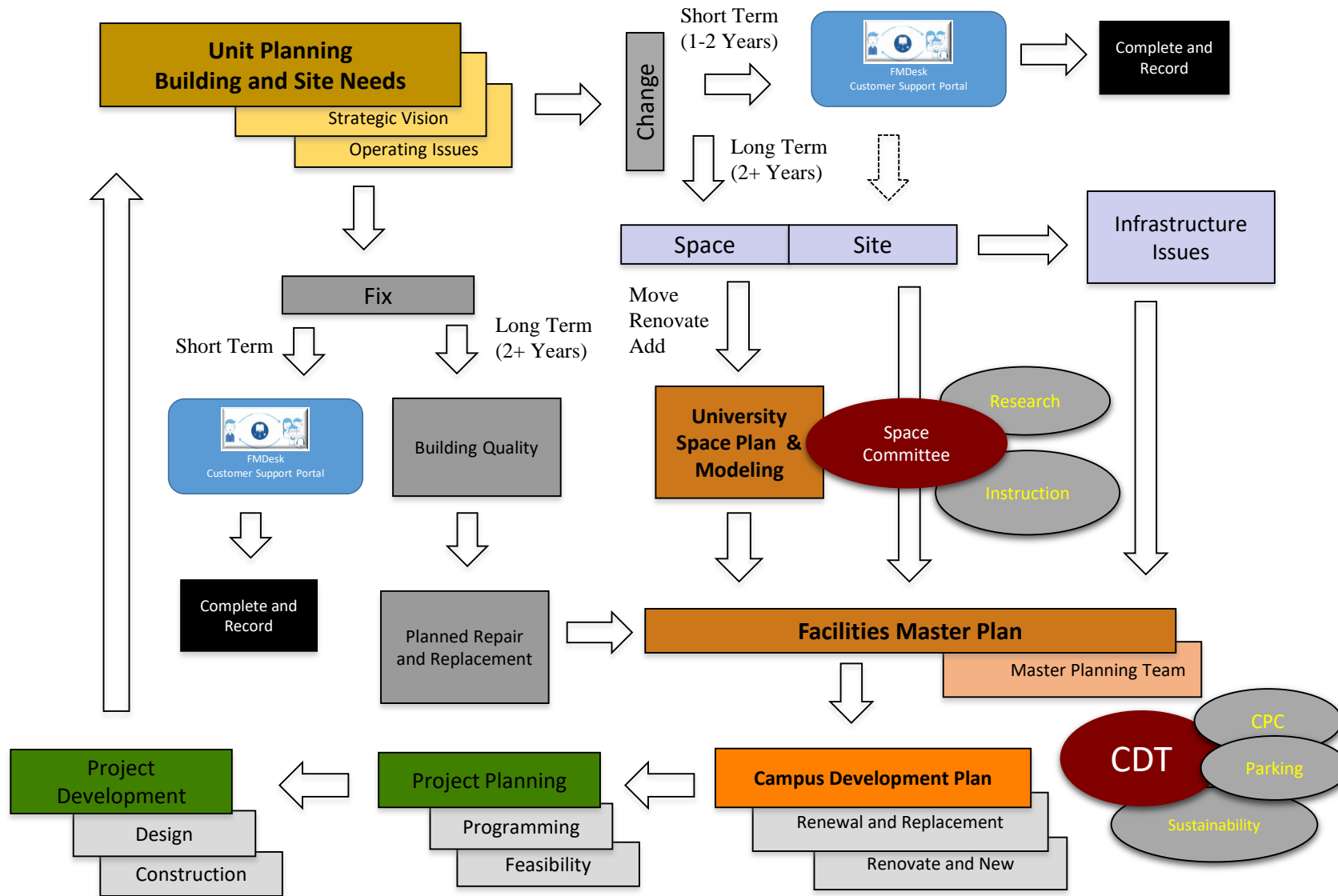
Master Planning

Space Planning

Major Studies

Project Updates

# Campus Planning



# Planning Relationships

## Master Planning Team

Parking and Transportation, Debbie Zumbach  
 Campus Landscape Architect, Scott Gritsch  
 FM Utilities, Glenn Mowery  
 Building Services, Jeff Harney  
 UI Business Manager, David Kieft  
 AVP FM, Don Guckert/Lynne Finn  
 Campus Planning, Joe Bilotta  
 UIHC, Phil Boothby  
 Housing, Jeff Aaberg  
 Athletics, Damian Simcox  
 Student Life, Scott Seagren

## Campus Development Team

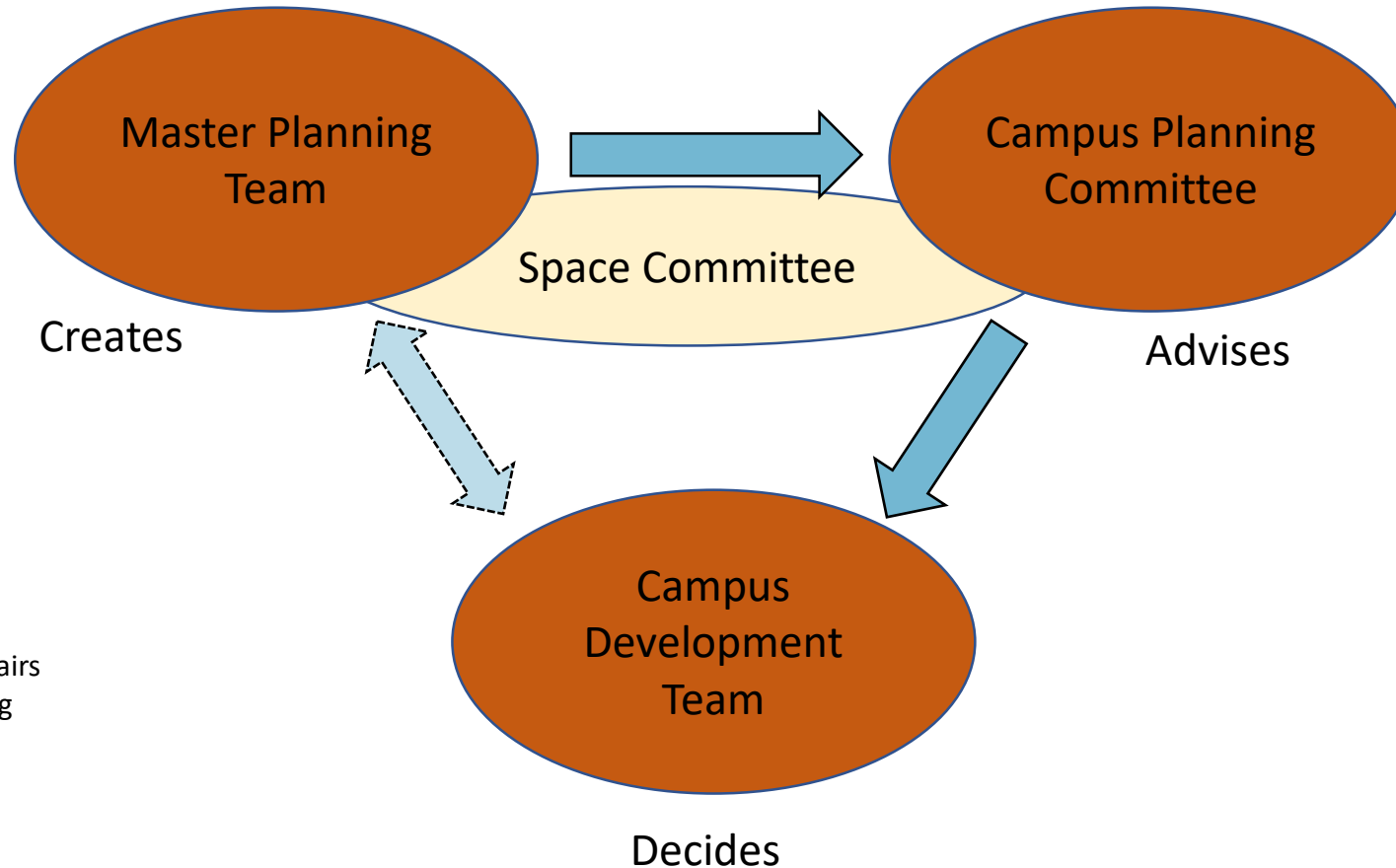
Rod Lehnertz, SVP of F&O  
 Sue Curry, EVP/Provost  
 Melissa Shivers, VP Student Life  
 John Keller, Interim VP Research  
 Terry Johnson, VP, CFO  
 Brooks Jackson, VP for Medical Affairs  
 Adele Vanarsdale, Campus Planning  
 Laura McLeran, President's Office  
 Gary Barta, Athletic Director  
 Suresh Gunasekaran, UIHC CEO  
 David Kieft, UI Business Manager  
 Don Guckert, AVP Facilities Mgmt  
 Joe Bilotta, Director, Campus Planning

## Campus Planning Committee

Jerry Anthony, Faculty Rep (Chair)  
 John Fuller, Faculty Rep  
 Paul Hanley, Faculty Rep  
 Craig Just, Faculty Rep  
 Barbara Mooney Faculty Rep  
 Matthew Edwards, Staff Rep  
 Erin Litton, Staff Rep  
 John Weyer, Staff Rep  
 Joseph Feldmann, Student Rep  
 Jamie Porter, Student Rep  
 Gustave Stewart, Student Rep  
 Joe Bilotta, Admin Liaison  
 Don Guckert, Admin Liaison

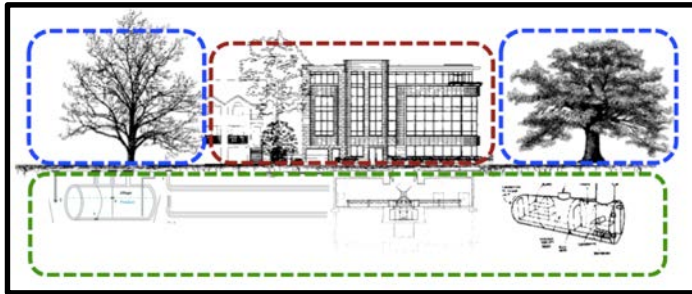
## Space Committee

Joe Bilotta, Campus Planning (Chair)  
 Kirk Banks, Facilities Information Systems  
 Eugene Buck, CLAS Facilities Manager  
 Don Guckert/Lynne Finn, AVP Facilities  
 Rich Hichwa, AVP for Research  
 David Kieft, UI Business Manager  
 Alberto Segre, Faculty Rep  
 Don Szeszycki, AVP, Provost Office  
 Phil Boothby, CCOM Representative  
 Faculty Appointment (Vacant)



**47 FTE/Positions**

# Master Planning Structure (themes)



## General Information

- Process/Planning System
- Development Strategies
- Campus Setting, Neighborhood Context
- Campus Topography
- Historic Context
- Core Values
- Framework Plan

## The Site

- Land Use
- Open Space
- Vistas and View Planes
- Edges and Getaways
- Gathering Areas
- Wayfinding
- Vehicular Transportation
  - Routes and Paths
  - Parking
- Bikeways
  - Routes and Paths
  - Parking
- Pedestrian
  - Routes and Paths
  - Accessibility
- Urban Design Districts
- Site Amenities
  - Art Display
  - Vegetation

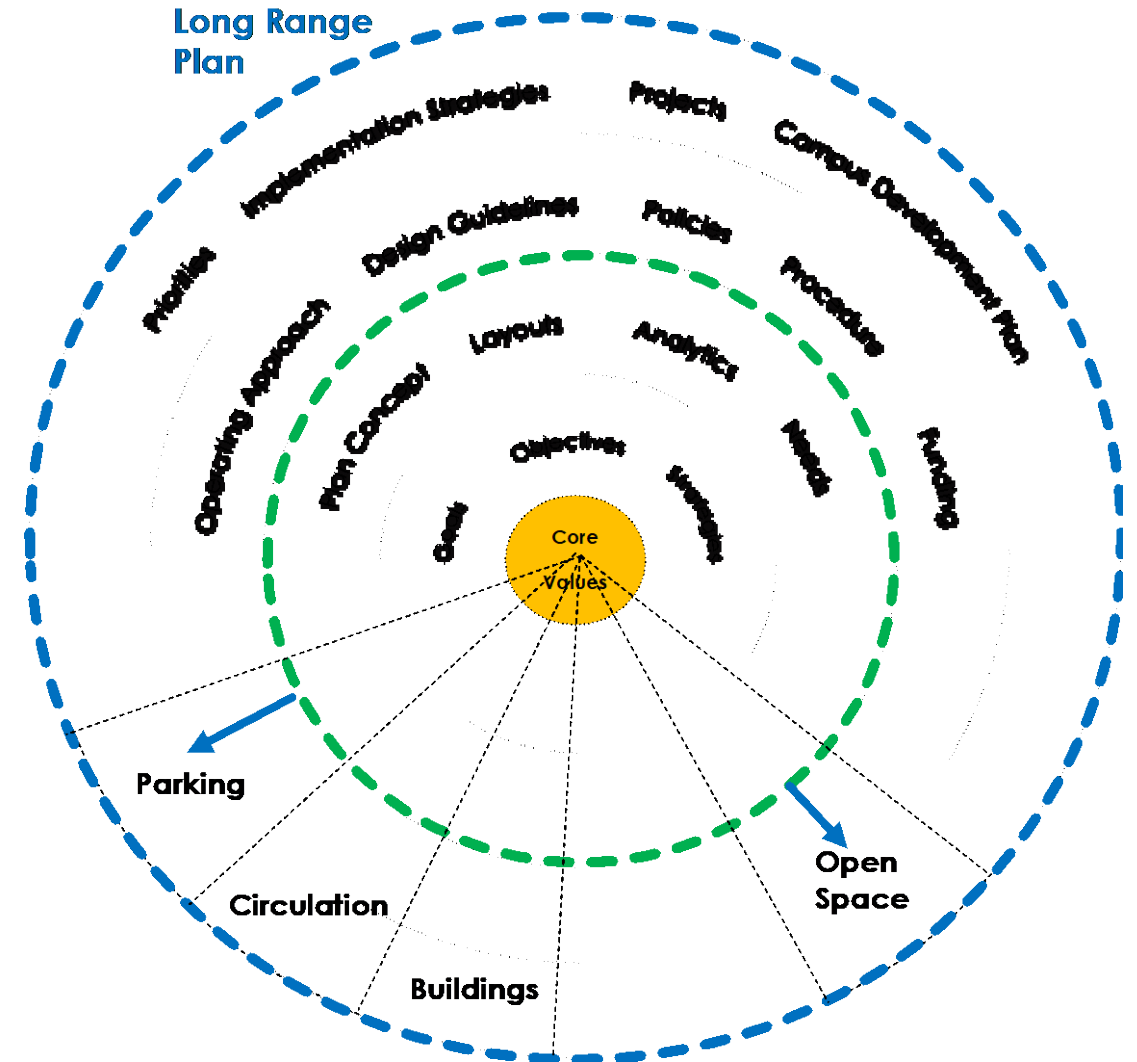
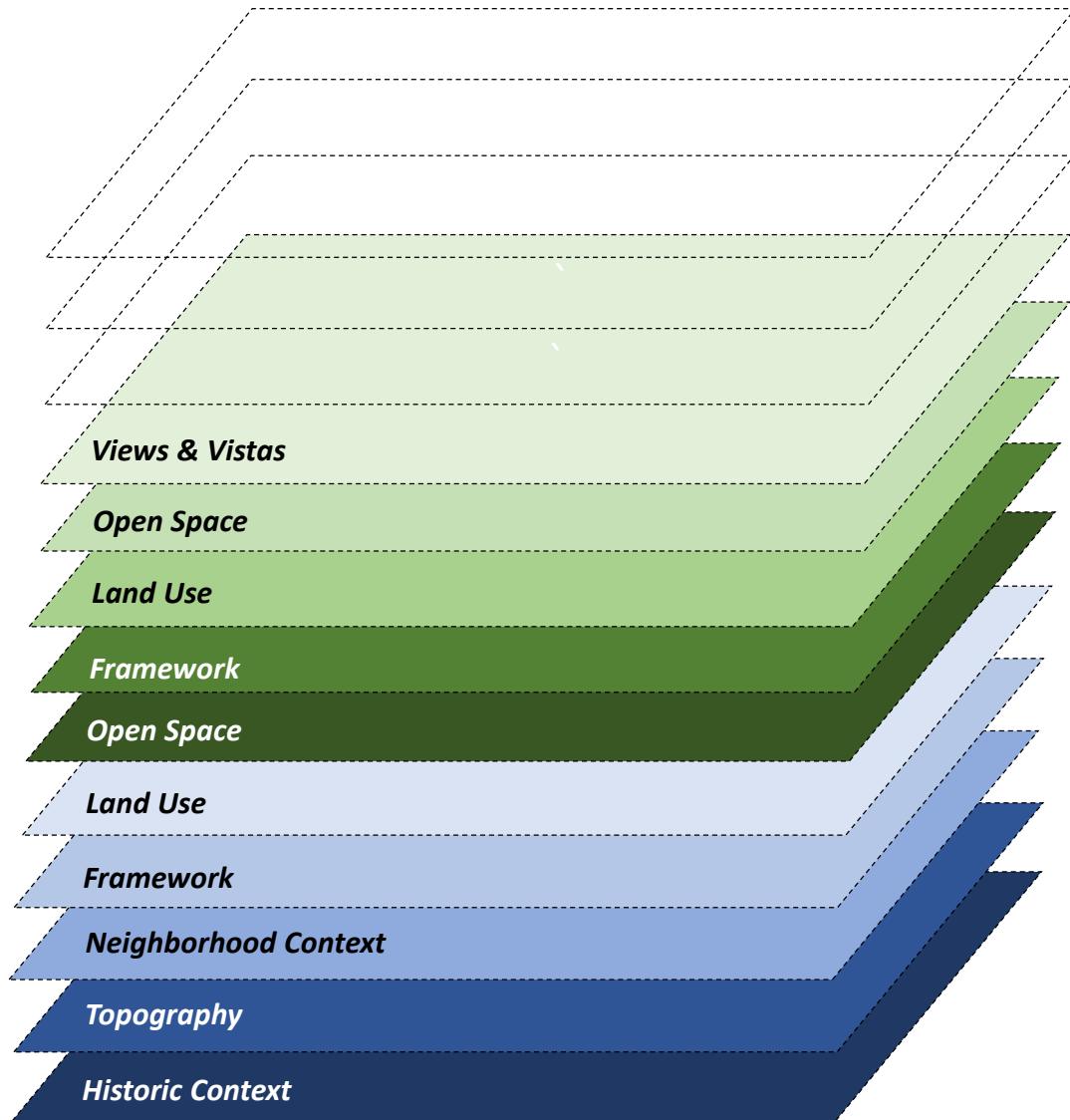
## Buildings

- Building Condition
- Building Use, New Buildings
  - Program Use and Needs
  - Space Plan
- Architecture
  - Form and Scale
  - Aesthetics and Materials

## Utility Infrastructure

- Production
- Distribution
- Systems
  - Lighting
  - Chilled Water
  - Electical
  - Potable Water
  - Steam
  - Condensate
  - Sanitary Sewer
  - Storm Sewer
  - Telecom/Data

# Theme Relationships



# Theme Relationships

Campus Planning and Development

About **Campus Planning** Space Planning & Management Business Manager Committees Resources

Home  
Campus Planning

**In This Section**

- Campus Master Plan
- Campus Development Plan
- Project Planning

**Campus Planning**

The University of Iowa has established a comprehensive campus planning process that is driven by all academic, research, outreach, student life, patient care, and campus service programs. The foundation to the process is that the Unit (College) planning drives the space planning, master planning and campus development plans.



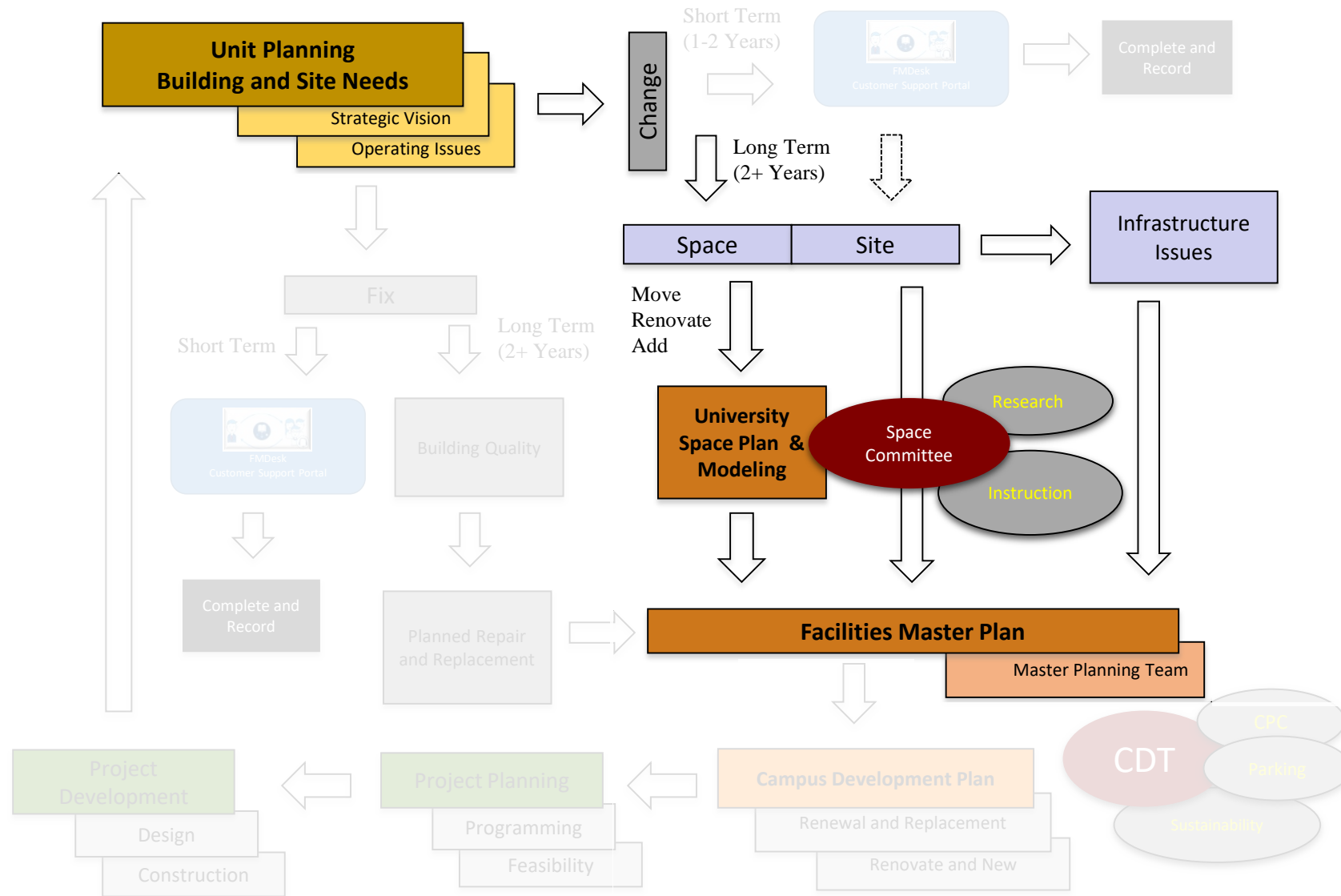
**Quick Links**

- Board of Regents
- Building for UI
- Contact Us
- FM@YourService
- FM Design & Construction
- People
- Project Information
- Project Process
- Smartsheet Login

THE UNIVERSITY OF IOWA | **Campus Planning and Development**

About Campus Planning Space Planning & Management Business Manager  
Committees Resources

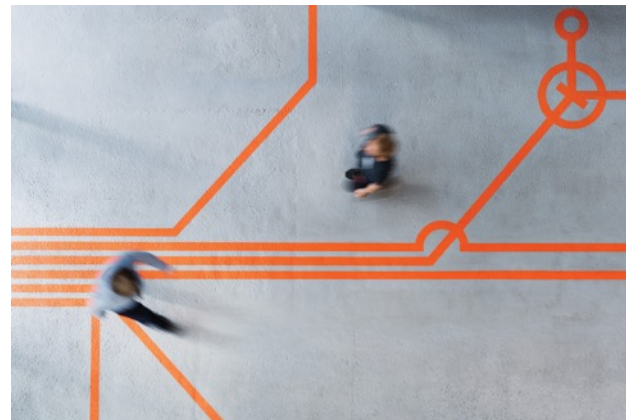
2 of 13



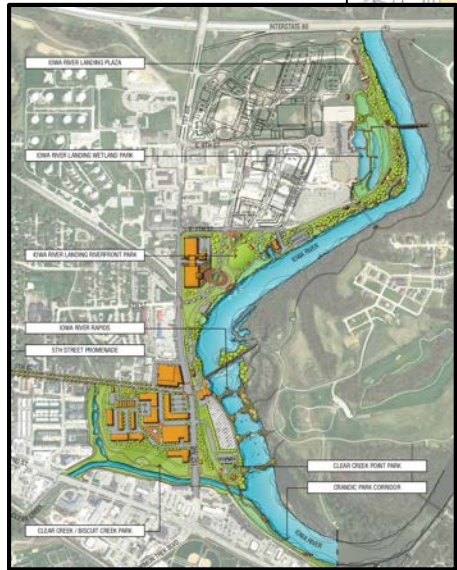
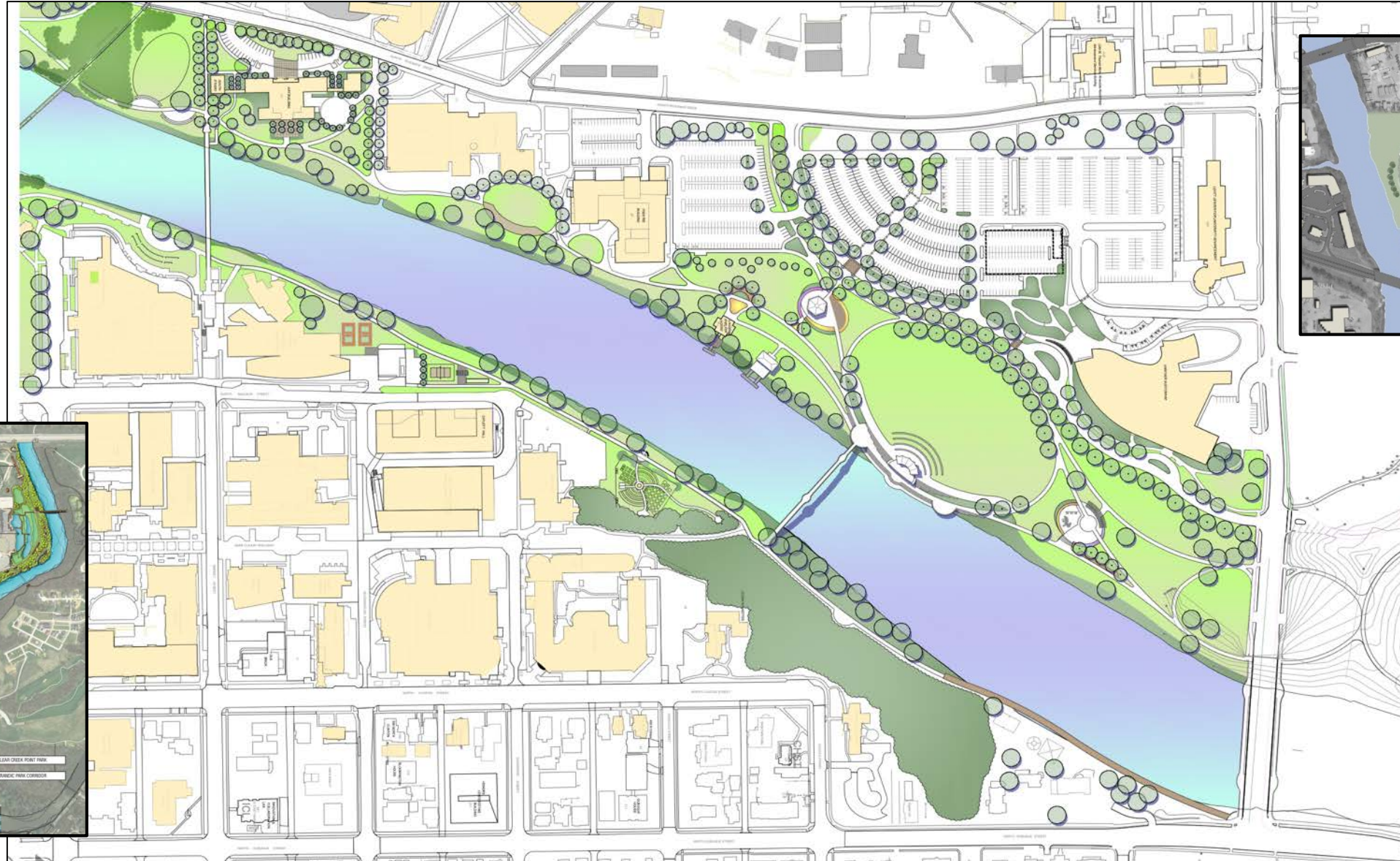


# Wayfinding Update

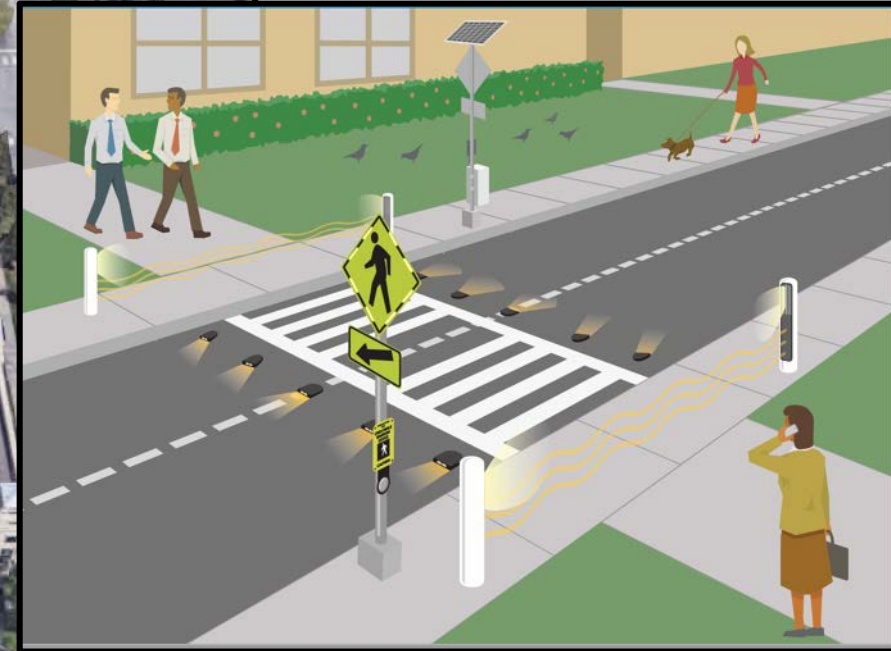
WAYFINDING PROGRAM MATRIX			Modes of Travel						Places												
			Pedestrian		Non-Motorized	Motorized			Academic		Health Care				Sports	Residential			Oakdale		
			Traditional	Mobility Impaired		Transit	Personal	Service	East	West	Hospital	Dental	Spec & Hearing	IRL		East	West	South			
<b>Students</b>																					
Perspective	S1		O	O	O	O	X		X	X					O	O	O	O			
Residential	S2		X	X	X	X															
Commuter	S3		O	O	O	X	X		X	X									O		
<b>Visitors</b>																			O		
1st Time	V1		O	O			X		X	X	O	O	O	X					X		
Patients	V2		O	O		X	X				X	X	X								
Events	V3		O	O	O	X	X		X	X				X							
<b>Employees</b>	E		X	X	X	X	X														
<b>Service Providers</b>	P						O	X	X	X	X	X	X	X	X	X	X	X	X		
<b>Emergency Response</b>	R						O	X	X	X	X	X	X	X	X	X	X	X	X		
4/12/18			X	<b>Primary driver or major influence</b>																	
			O	<b>Secondary impacts</b>																	



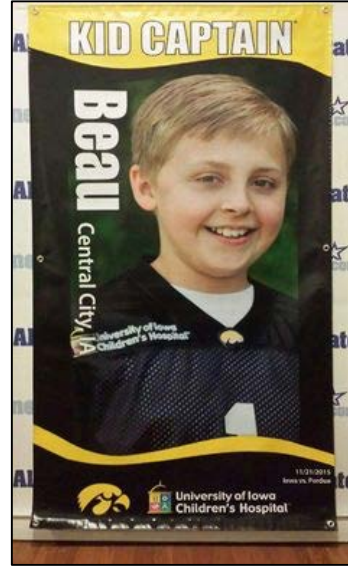
# Iowa River Corridor



# T. Anne Cleary Walkway



# Banners and Herky Policies



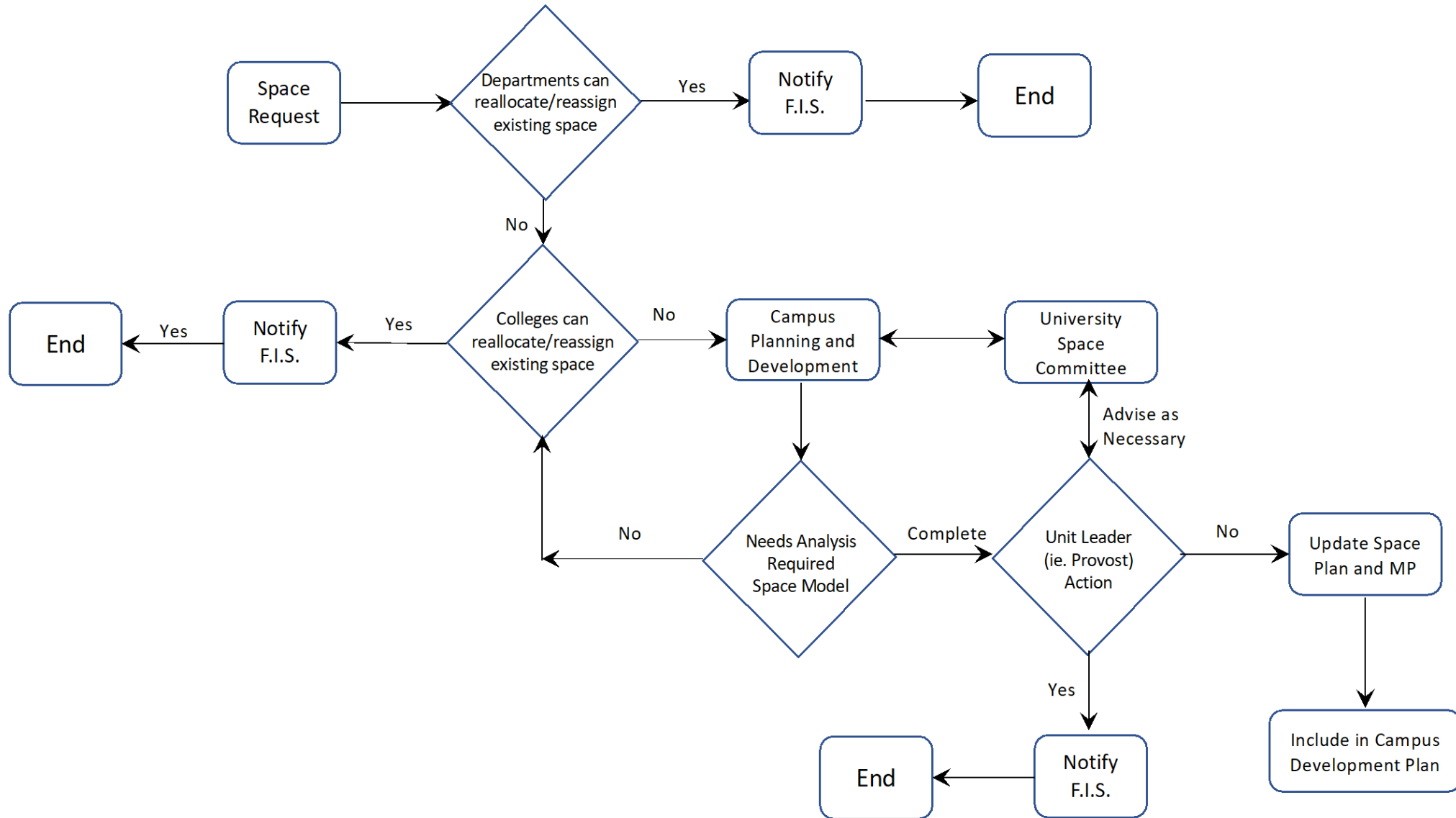
UI Strategic Communications/Rick Klatt  
Athletics/Mary Jo Kinney  
UIHC/Cheryl Hodgson  
Facilities Management/Wendy Moorehead

President's Office/Pete Matthes  
UI Strategic Communications/Rick Klatt  
Athletics/Damian Simcox  
Campus Planning/Adele Vanarsdale  
Leadership, Service, Civic Engagement/Isabelle Webber  
Campus Planning Committee/John Weyer  
College of Education/Liz Hollingsworth

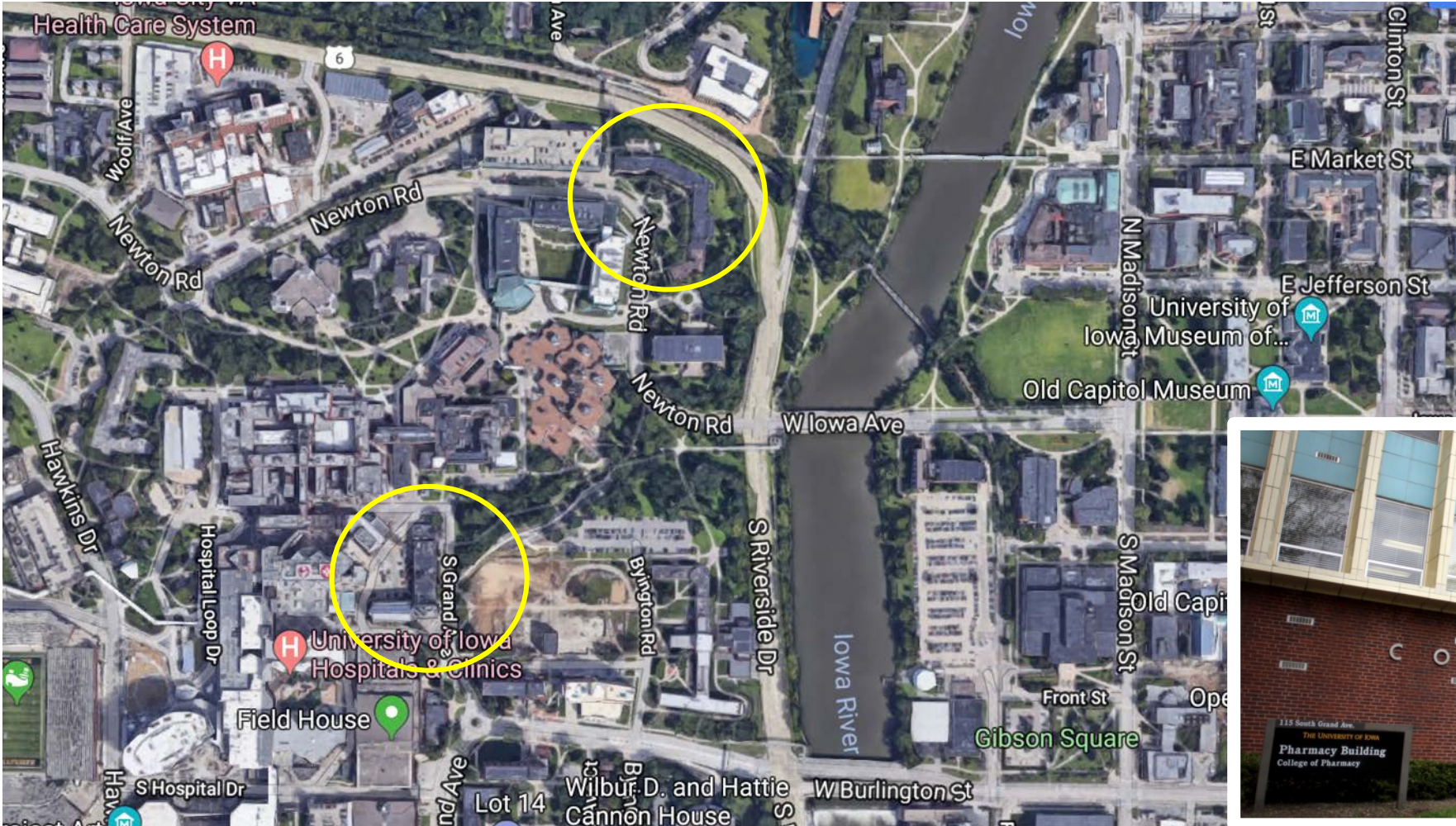
# Student Gardens



# Space Management & Policies



# Westlawn – North Wing Pharmacy



# Westlawn - Child Care Center

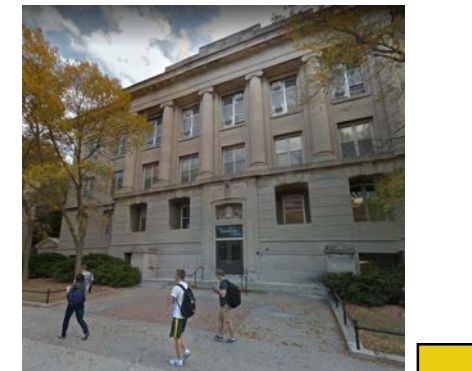
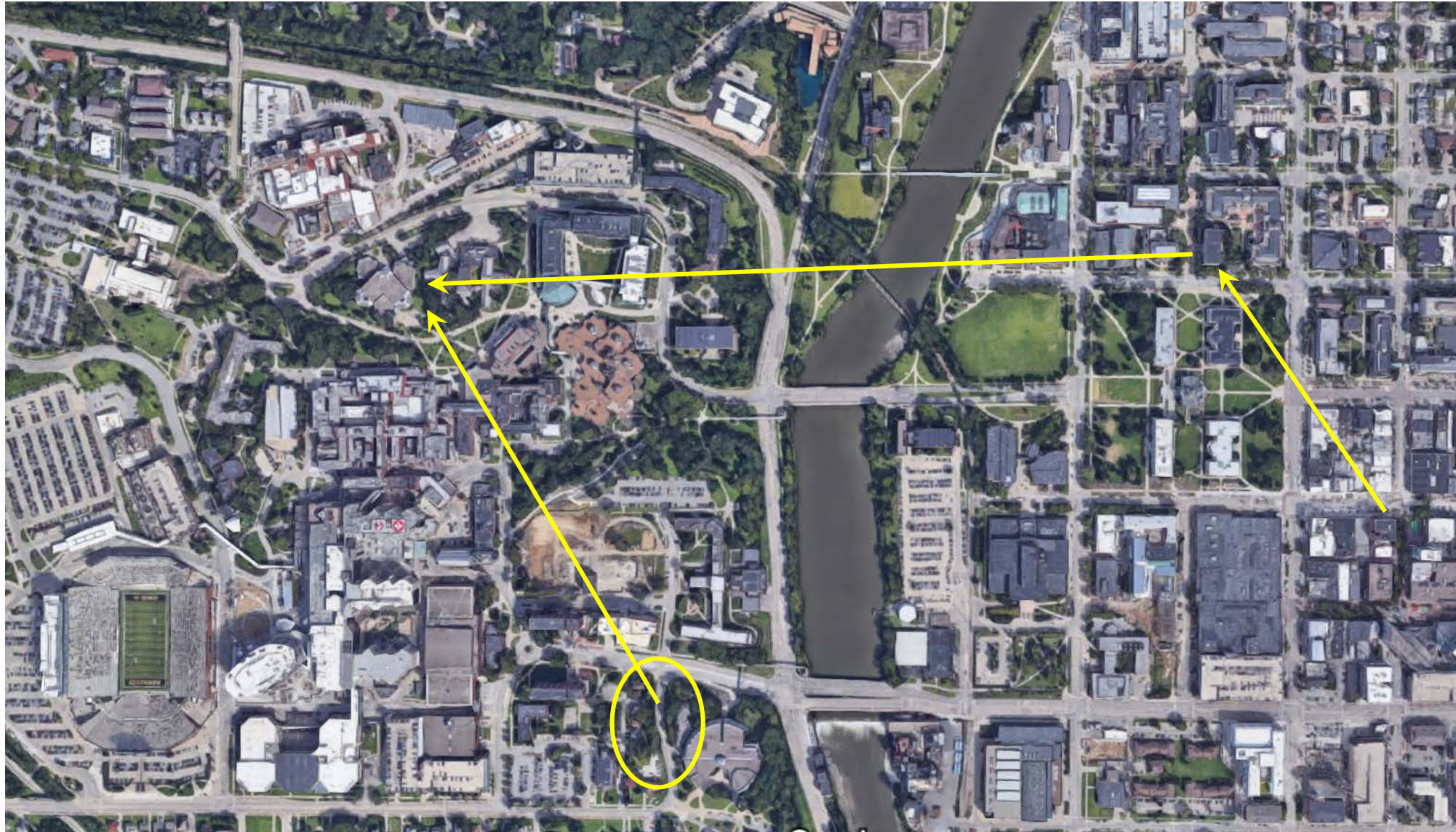




# Westlawn - Well Being Center



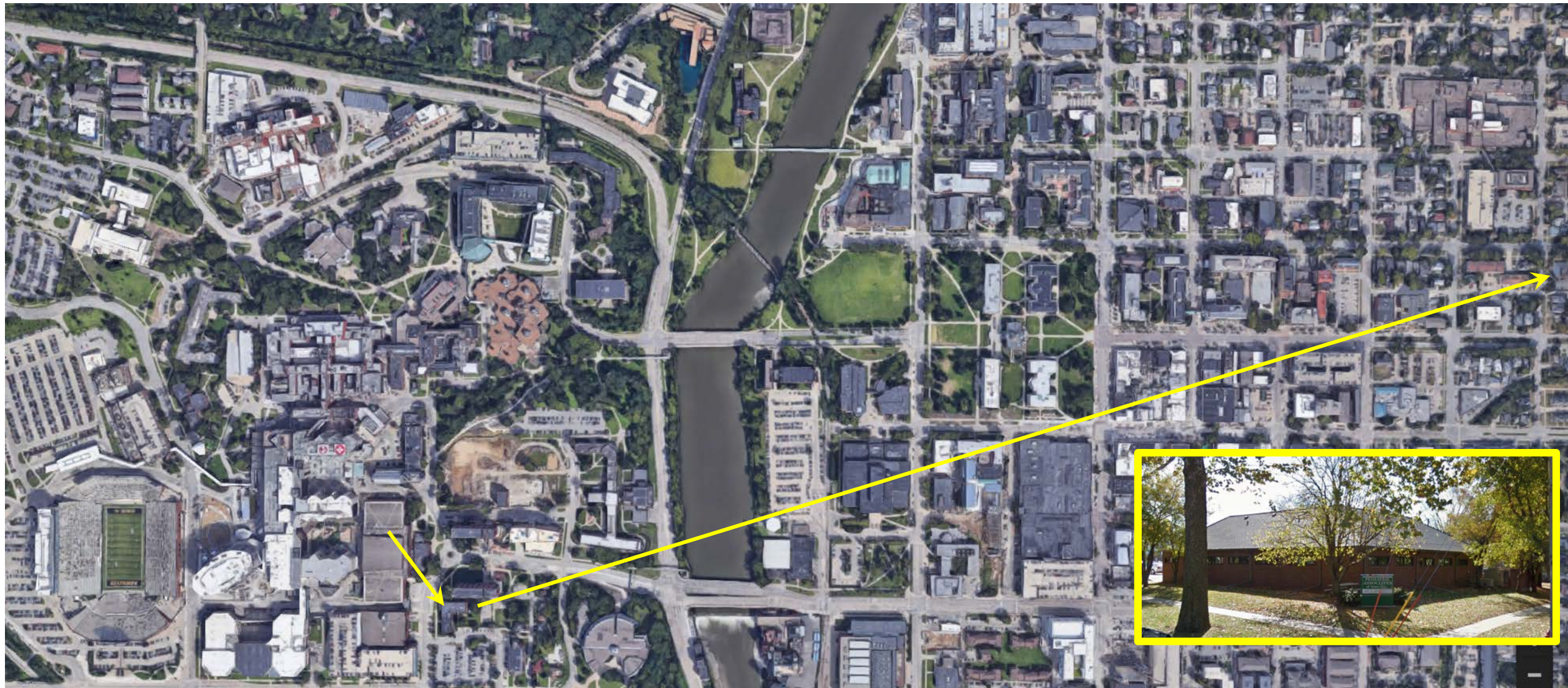
# Hardin Library – Gilmore Hall – EHS Houses



# UCC Phase I – CoPH – Calvin Hall - Jefferson



# Fieldhouse – South Quad – PEDs Clinic



# IATL Storage



# Capital Plan



# COLLEGE OF BUSINESS



# Iowa Memorial Union

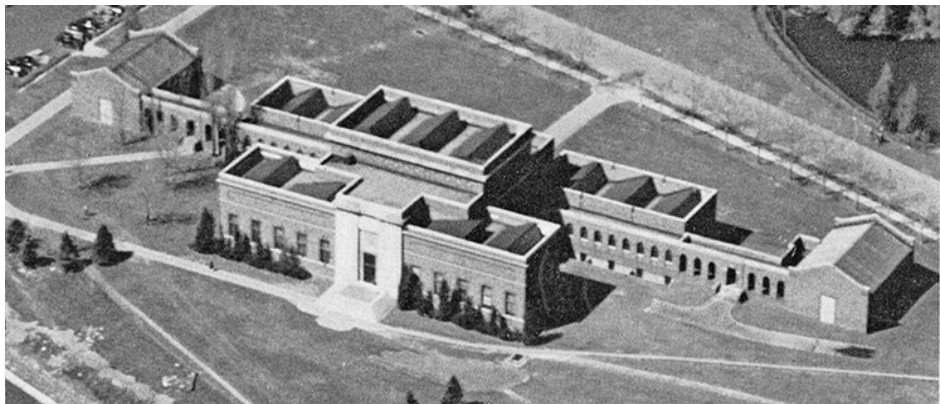




# Well-Being Center (Health/Counseling/Other)



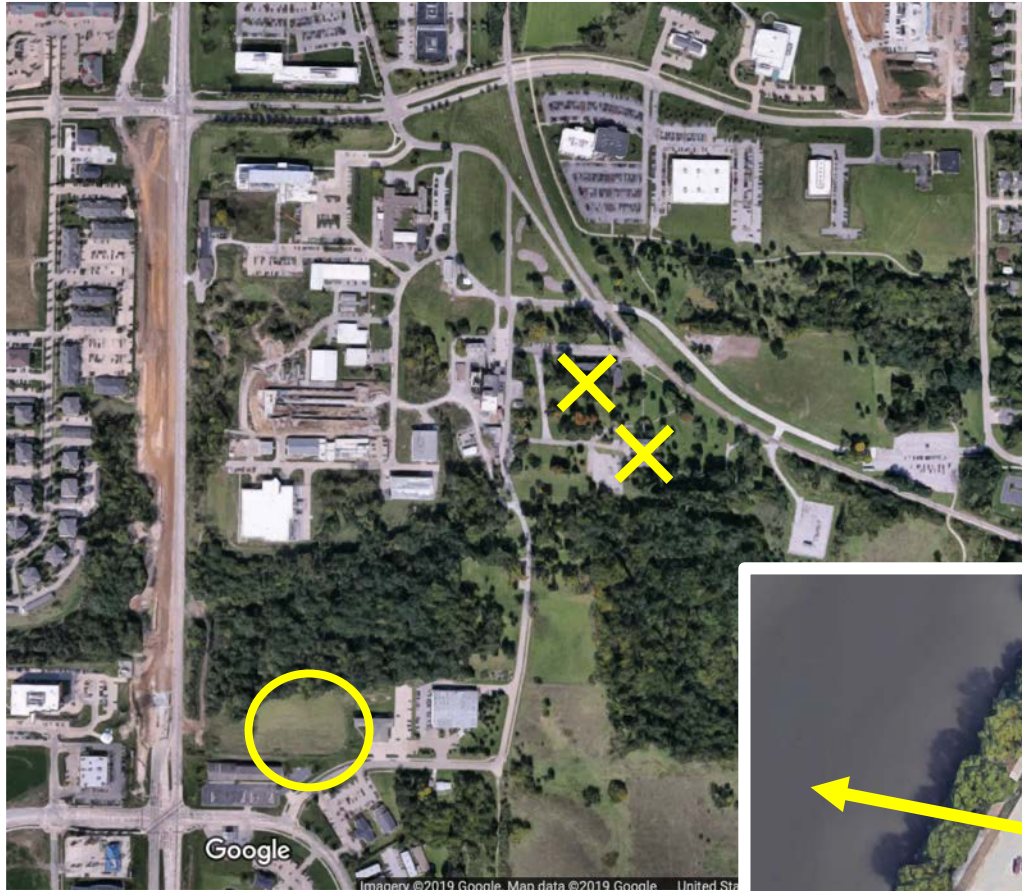
# Art Building Modernization







# Faculty Art Studios



# Design & Construction - Capital Project Update

July 10, 2019



# Lindquist Center – Renovate 1<sup>st</sup> & 2<sup>nd</sup> Floor



Bid: Feb/Mar 2020  
Complete: Fall/Winter 2021



# Lindquist Center – Renovate 1<sup>st</sup> & 2<sup>nd</sup> Floor



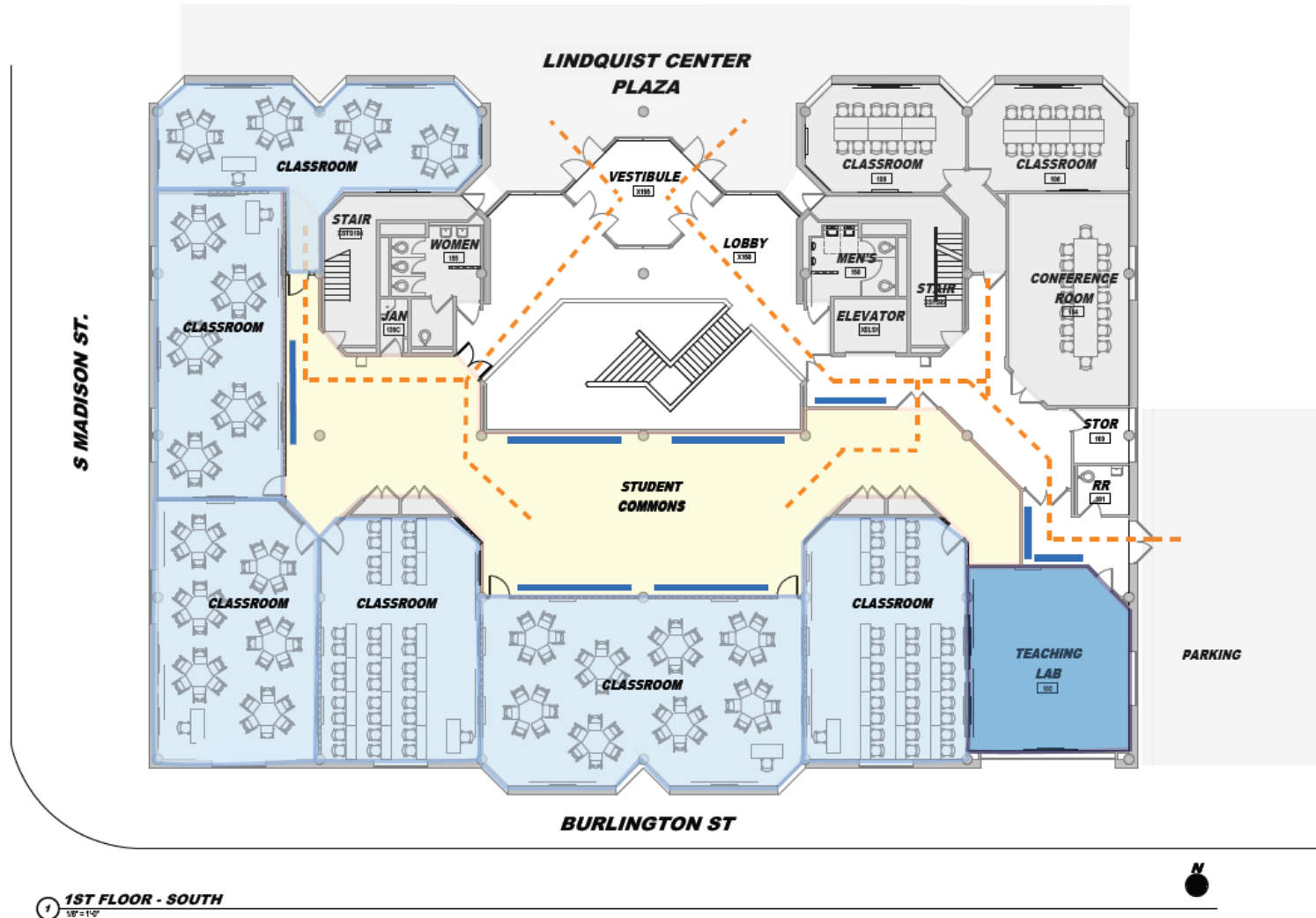
View from café looking NE

View from entrance looking SW





# Lindquist Center – Renovate 1<sup>st</sup> & 2<sup>nd</sup> Floor

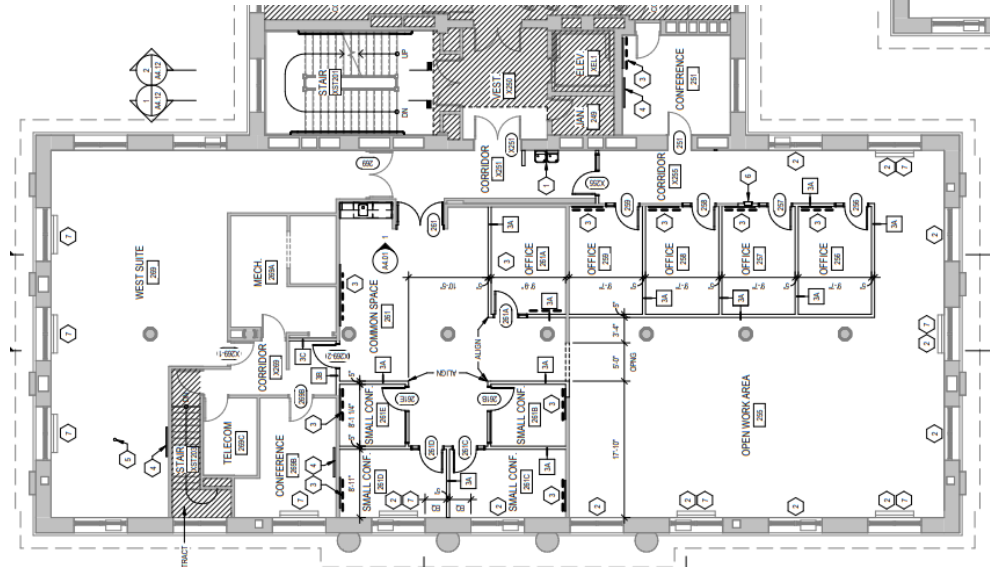
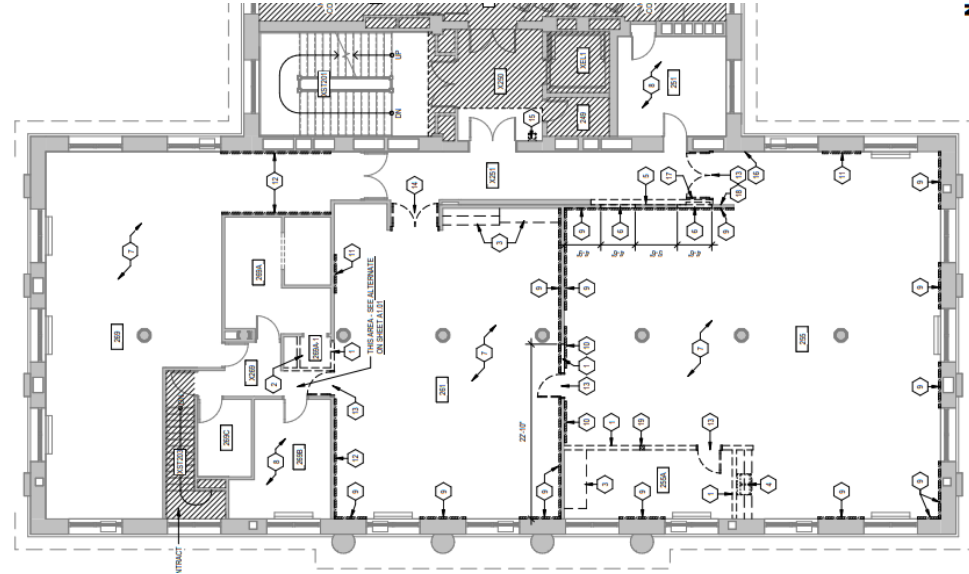


1 1" = 1'-0" 1ST FLOOR - SOUTH





# Macbride Hall – Renovate 2<sup>nd</sup> Floor South



Bid: August 2019  
Complete: May 2020



# North Hall – Renovate 4<sup>th</sup> Floor



Bid: September 2019  
Complete: May 2020

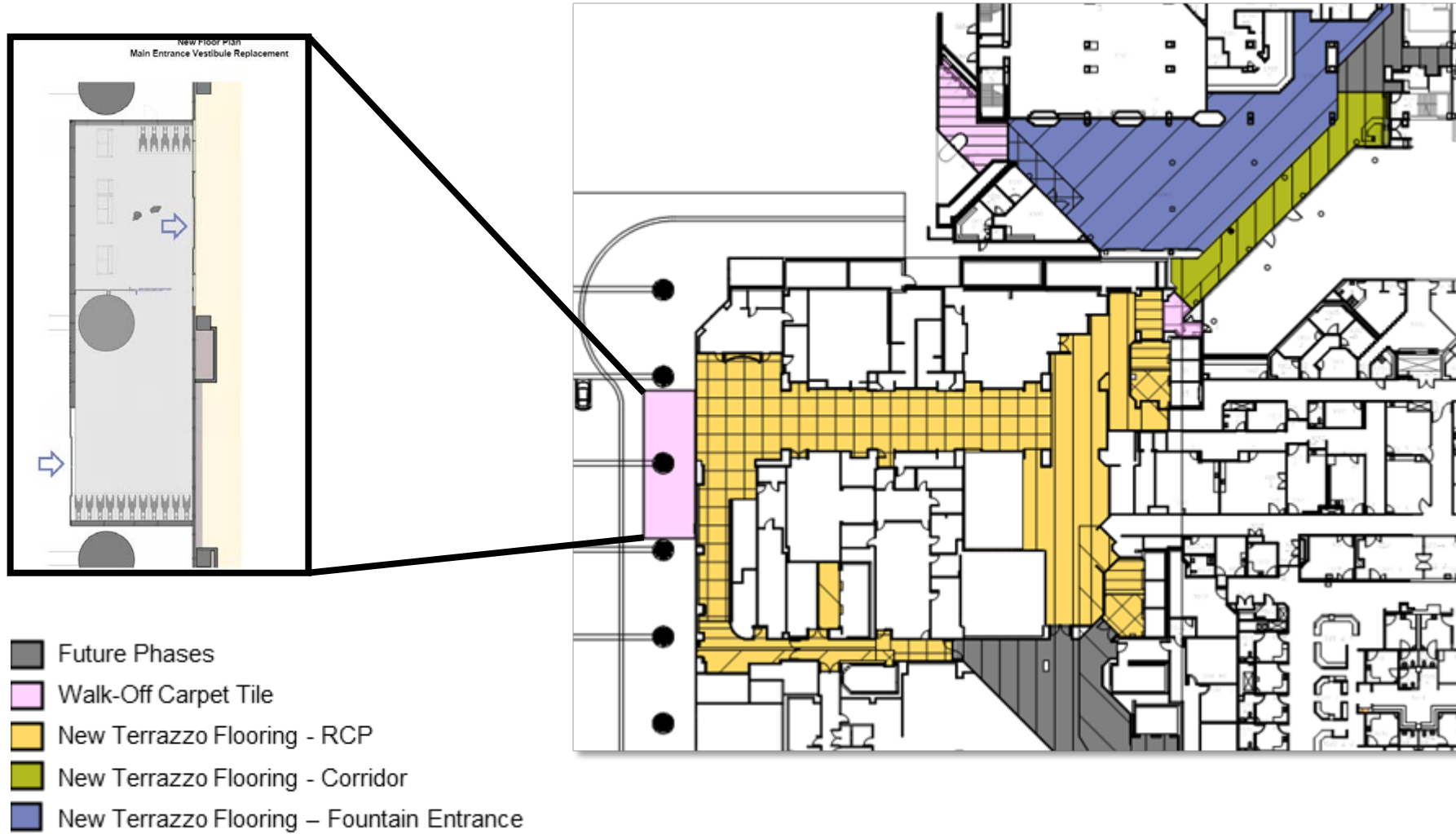
**A1 FLOOR PLAN - LEVEL 4**  
1/8" = 1'-0"

# UIHC – Roy Carver Pavilion Replace Flooring on 1<sup>st</sup> Floor

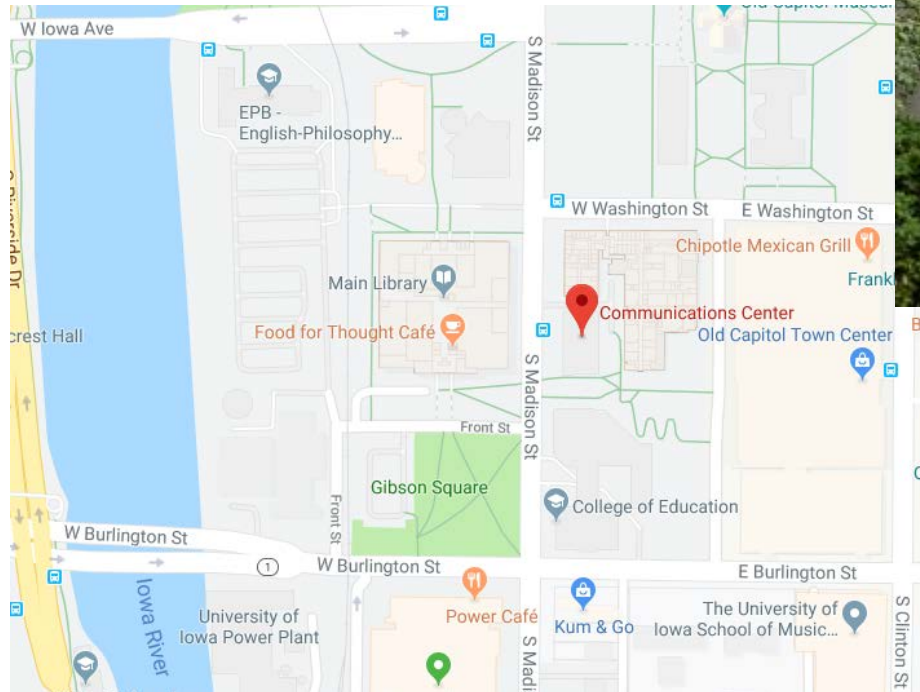


Bid: September 2019  
Complete: April 2020

# UIHC – Roy Carver Pavilion Replace Flooring on 1<sup>st</sup> Floor

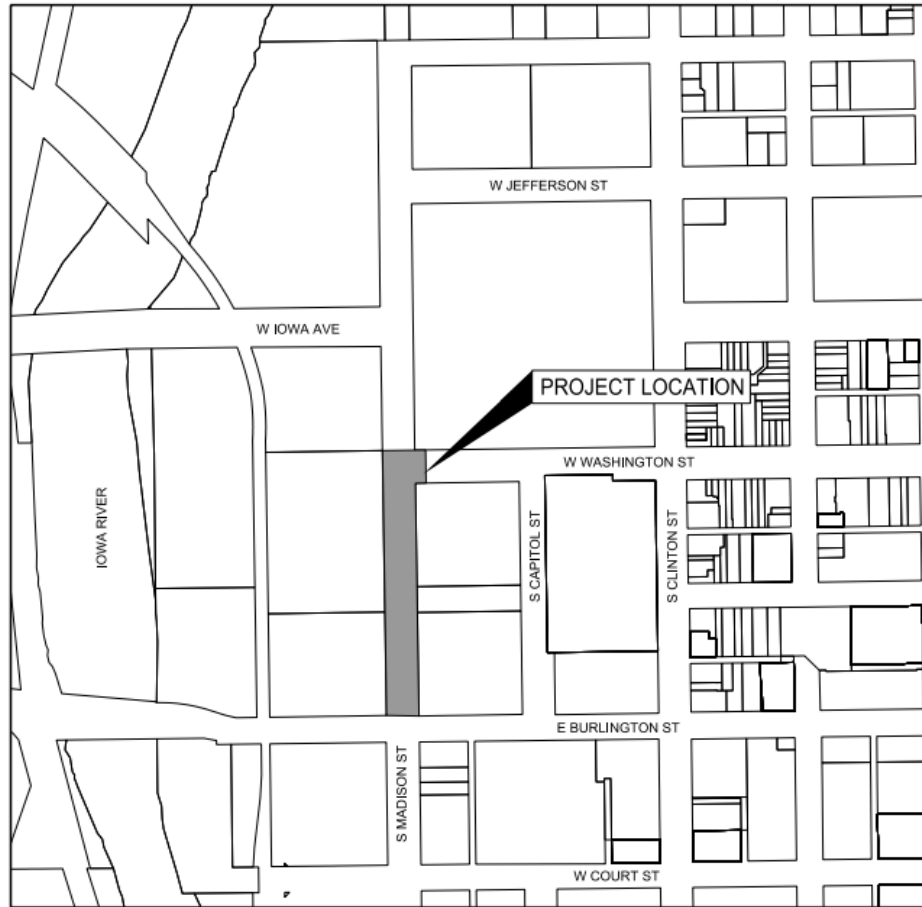


# Communications Center – Raze Building



Bid: October 2019  
Complete: July/August 2020

# Utilities Distribution System – Replace Old Capitol Tunnel

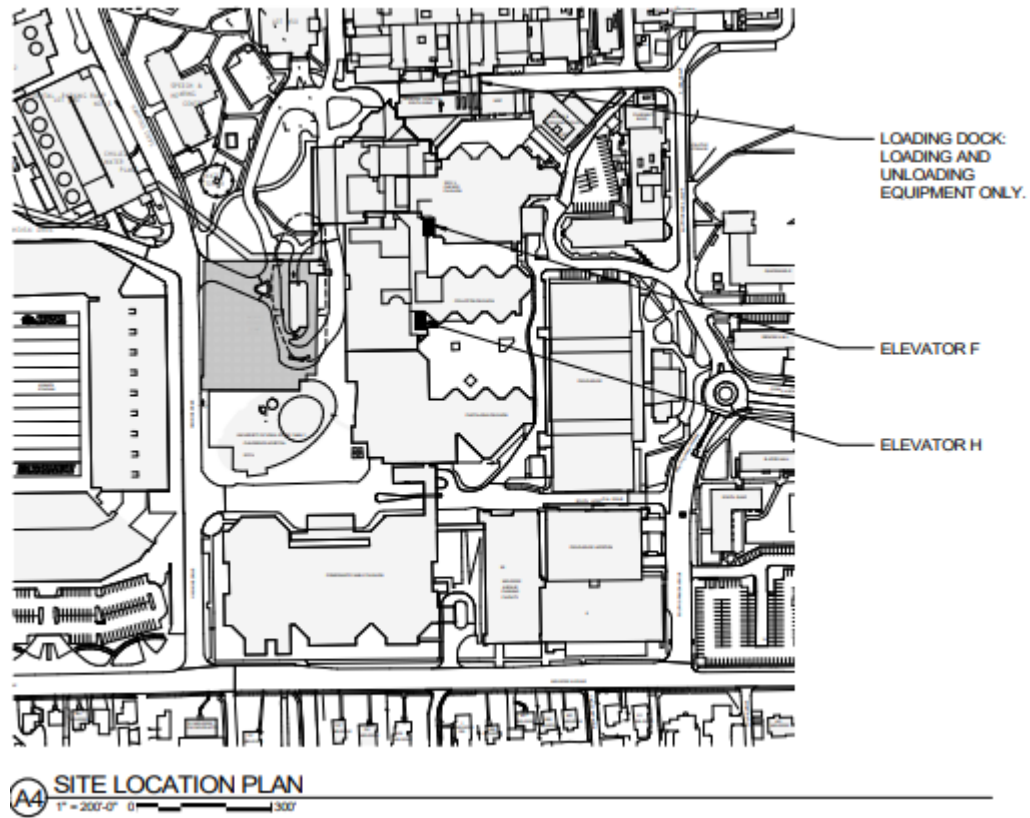


VICINITY MAP



Bid: January 2020  
Complete: September 2021

# UIHC – John Colloton Pavilion Upgrade Elevators H and F



Bid: Fall 2019

Complete: Spring 2021



# New Museum of Art Facility



## Access & Construction Alerts

About Us

Services

Projects

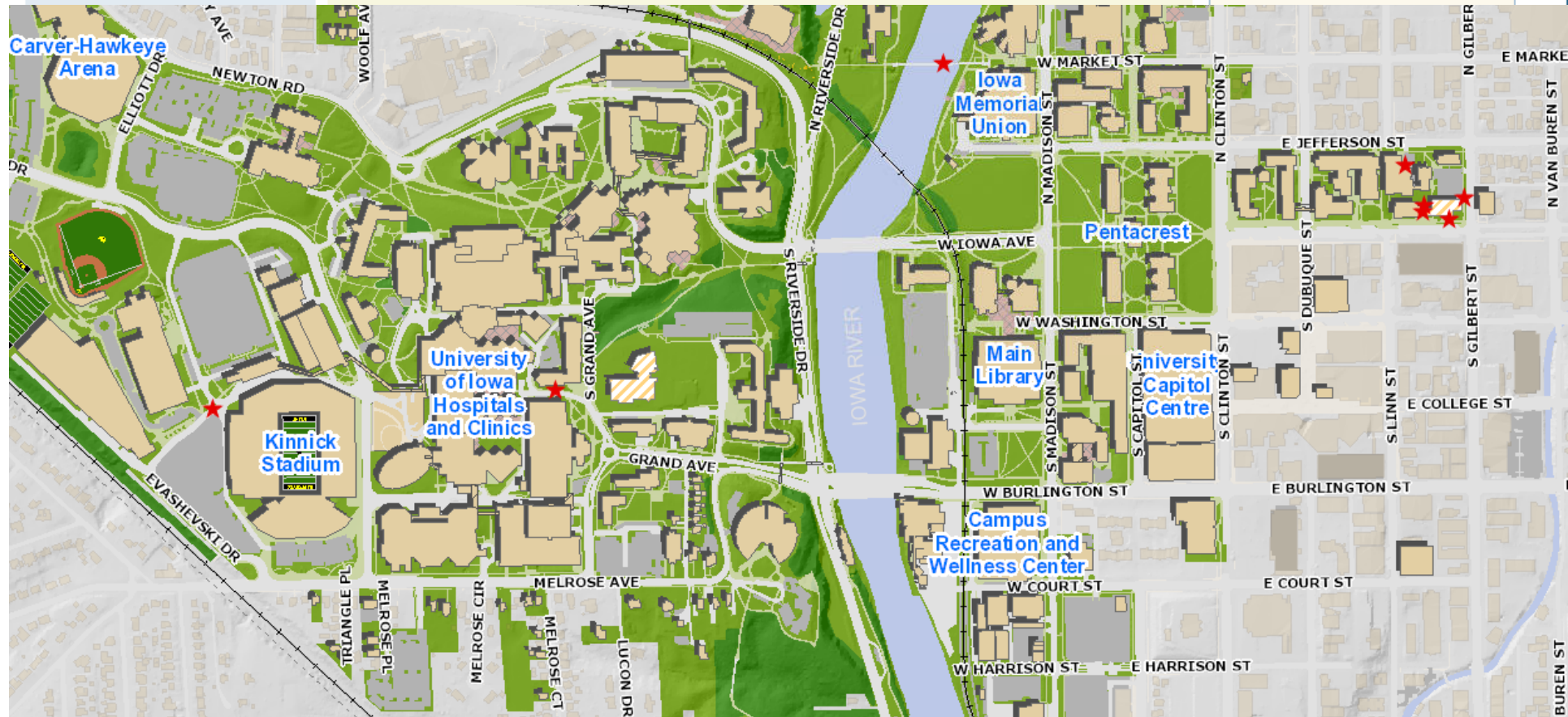
### UI ACCESS & CONSTRUCTION ALERTS

Construction activity may affect road, sidewalk, parking lot, elevator or building entrance access.

Sign up for email notification of UI road, sidewalk, building entrance and elevator closures:  
[Subscribe to the Access & Construction Alerts listserv](#)

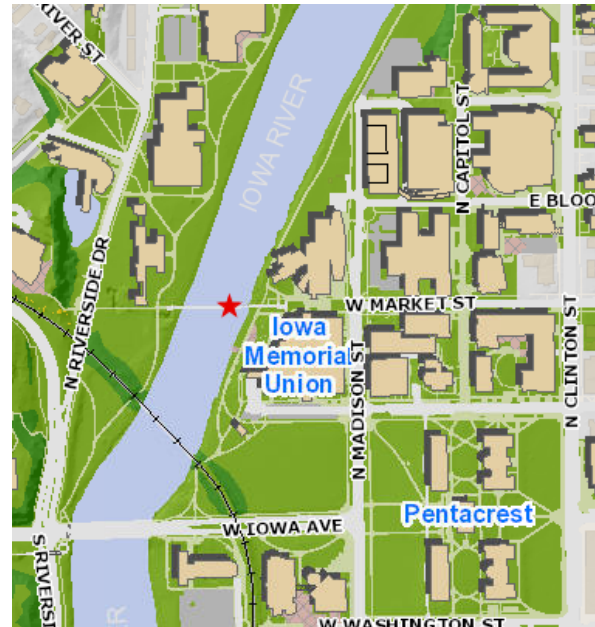
### QUICK LINKS

- Campus Accessibility
- Design Standards & Procedures
- Campus Planning Committee
- Design & Construction

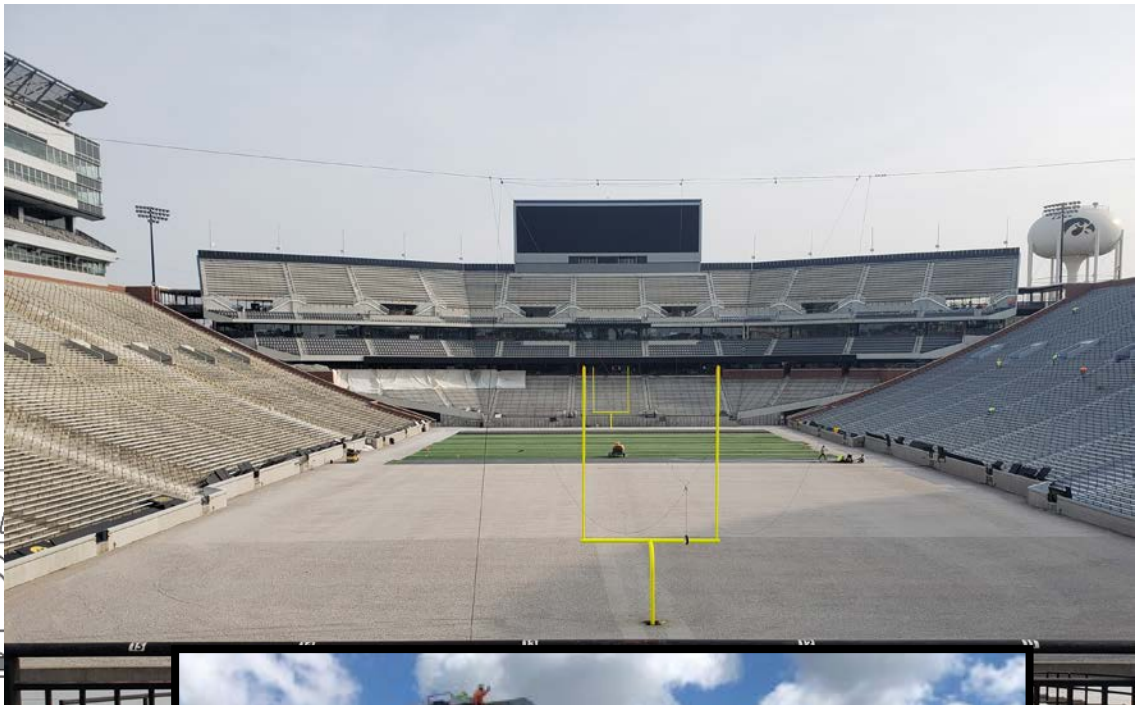
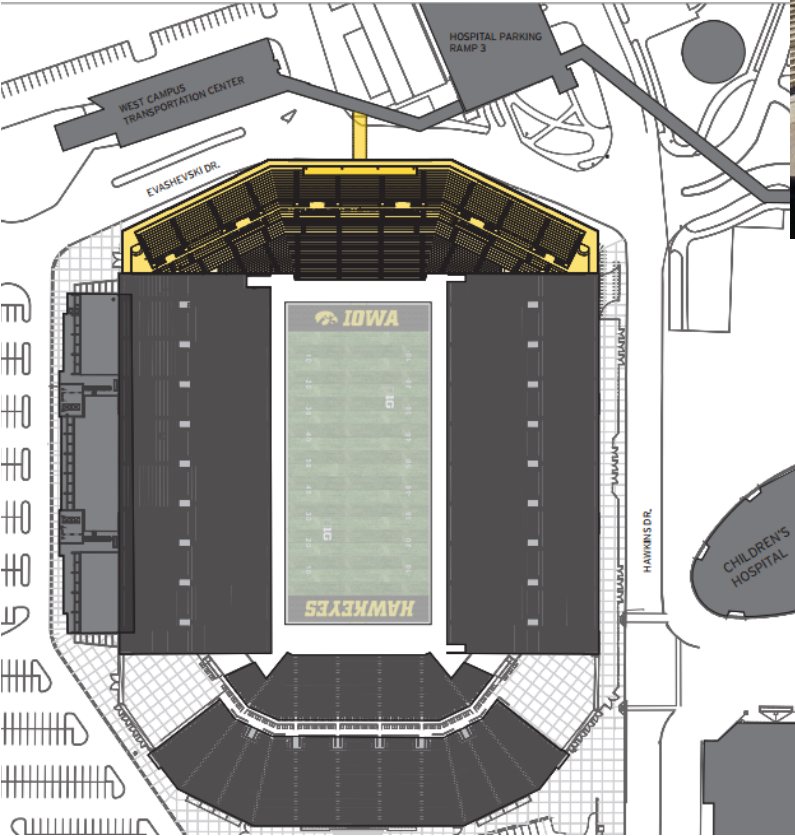




<b>Project Name</b>	IMU Footbridge - Implement Drainage Measures	
<b>Location</b>	Entire IMU Footbridge will be closed at both east and west approaches. No bridge access will be available July 8-12.	
<b>Reason For Closure</b>	The closure is necessary to allow for replacement of IMU footbridge expansion joints, application of deck coating system, and implementation of drainage improvement measures.	
<b>Additional Information</b>	Construction barricades will be erected to close off pedestrian access to IMU Footbridge at both east and west approaches.	
<b>Start Date</b>	7/8/2019	<b>Start Time</b> 5AM
<b>End Date</b>	7/12/2019	<b>End Time</b> 5PM
<b>Traffic Control</b>	No	<b>Affected Bus Route</b>
<b>Alternate Route</b>	Iowa Avenue bridge sidewalks and/or Hancher Footbridge	
<b>Accessible Route</b>	Iowa Avenue bridge sidewalks and/or Hancher Footbridge	
		
<b>Map</b>	<a href="https://maps.facilities.uiowa.edu/closures/">https://maps.facilities.uiowa.edu/closures/</a>	
<b>Traffic Control Plan</b>		
<b>Contact</b>	319-335-5500	



# Kinnick Stadium North End Zone Reconstruction

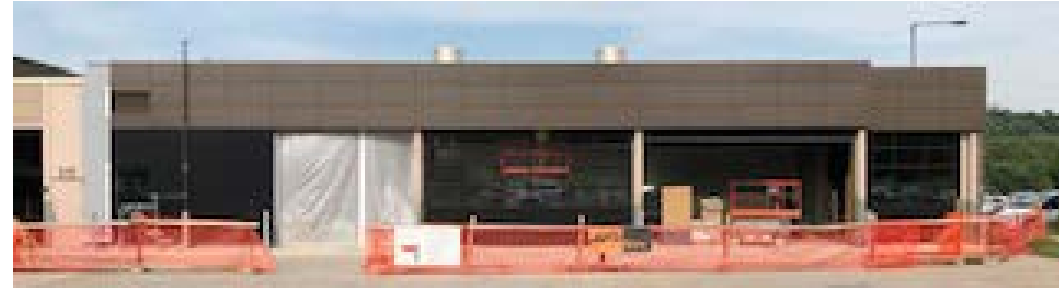




# Kinnick Stadium North End Zone Reconstruction

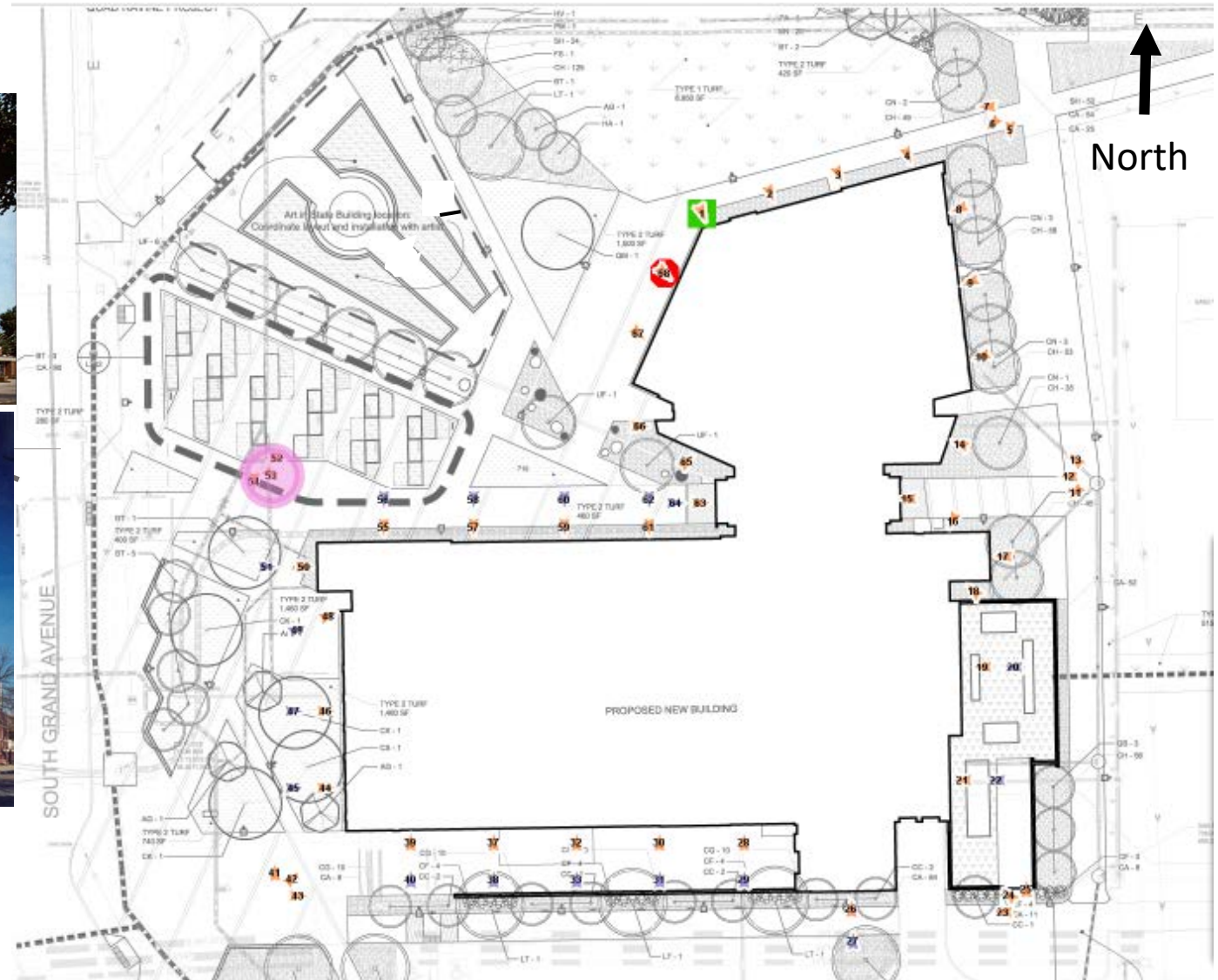


# Cambus Maintenance Facility – Renovate Cambus Garage

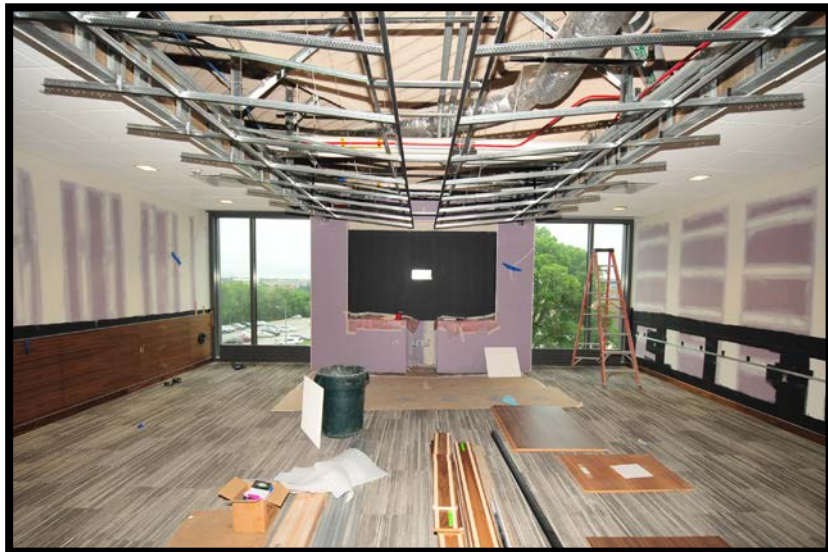


October 2019

# College of Pharmacy – New Facility & UIP Fitout



# College of Pharmacy – New Facility & UIP Fitout





November 2019



# College of Pharmacy – New Facility



**Psychological & Brain Sciences  
Building, complete January 2020**



Facilitating leading-edge research designed to unlock the human mind and brain.



University of Iowa - 0303801 - Psychological and Brain Science Facility  
Exterior Progression - Exterior - July 1 2019 - Photo 16



University of Iowa - 0303801 - Psychological and Brain Science Facility  
Exterior Progression - Exterior - July 1, 2019 - Photo 59



# Seashore Hall Raze Building



Bid: Spring 2020  
Complete: Summer 2021



# UIHC - Central Sterilization Services



Complete: Late  
November 2019



# UIHC - Central Sterilization Services

Webcam Live View as of 7-9-2019

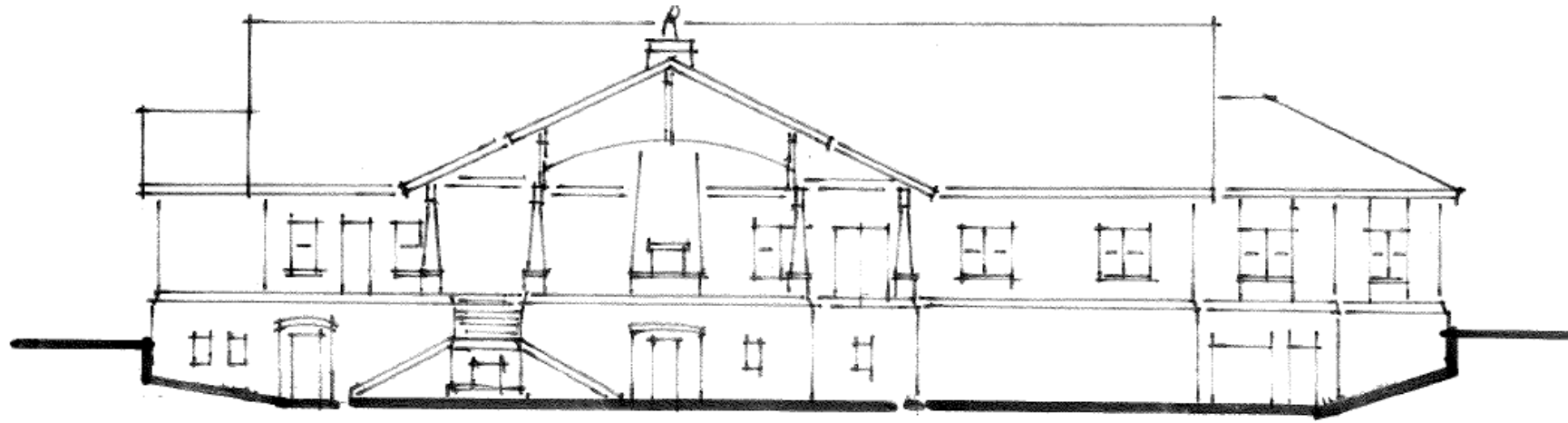


# Finkbine Golf House and Support Facility



Rebid  
December 13, 2018

Complete  
February 2020





**“BRIDGING OUR WORLD”**