

# Building Coordinators Network

March 20, 2019

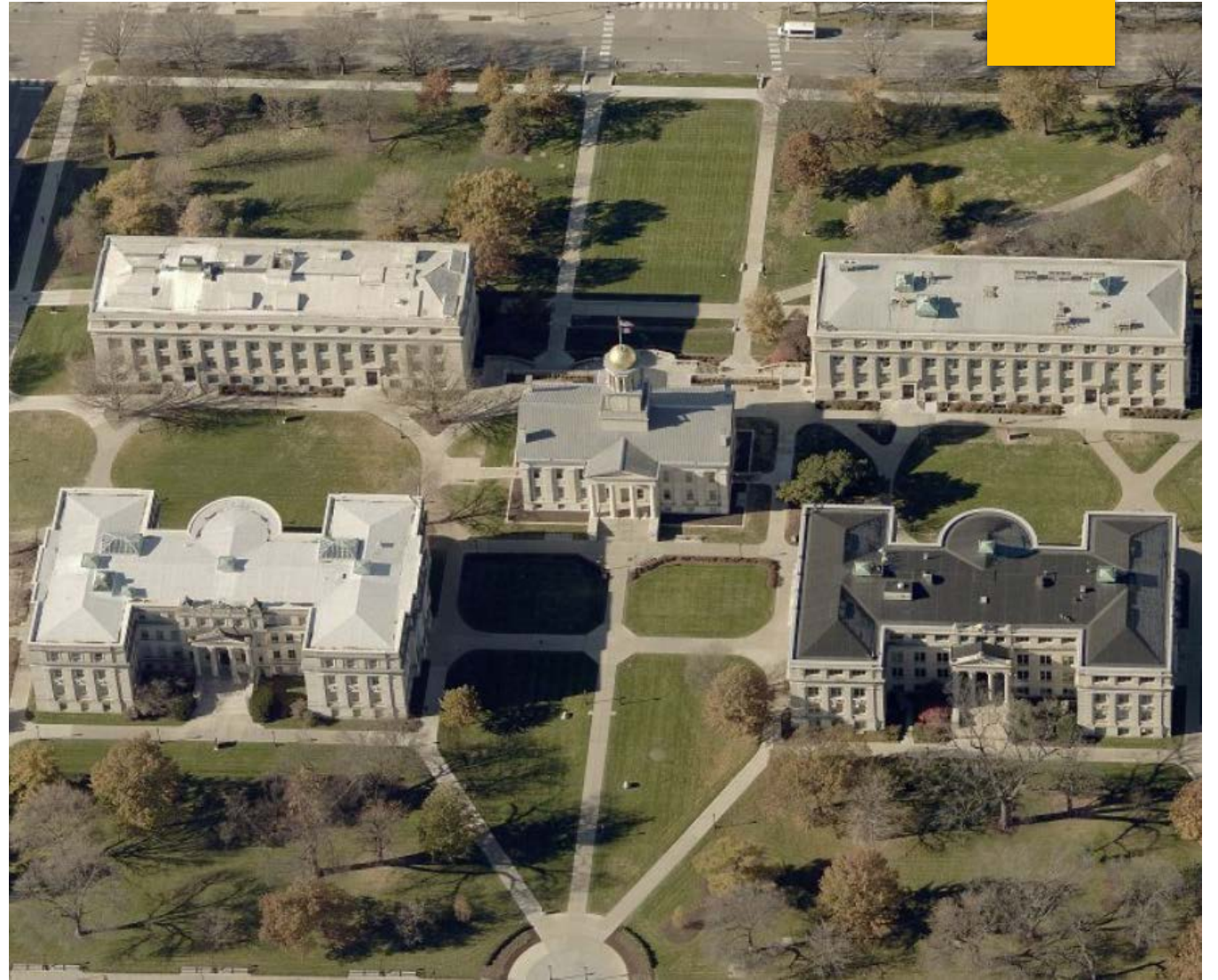
## Facilities Information Services (FIS)

Kirk Banks  
Associate Director



# Mission

Facilities Management Information Services in partnership with university administration and the University Space Committee, is responsible for space assignment, space planning and coordination, and maintaining and managing all space and physical development data for the university's 21 million gross square feet of space across 2,112 acres.



## Responsibility to BOR

Board of Regents Policy requires the Regent institutions to develop plans, provide governance reports, and provide data and/or exhibits on the management, purchase, disposition, or use of lands and other property, including easements and right of ways. BOR Statutory authority is outlined in Iowa Code Chapter 262.



**BOARD OF  
REGENTS**  

---

**STATE OF IOWA**

# Single Source of Truth

Facilities Information Services is the Single Source of Truth for all University land reporting and exhibits to the BOR.

Facilities Information Services is the Single Source of Truth for all University building and room inventory data.



BOARD OF  
REGENTS  

---

STATE OF IOWA

THE   
UNIVERSITY  
OF IOWA

# Data Stewardship Role

FIS supports the University of Iowa as the steward of information about University's facilities, lands, and infrastructure.



FIS staff create and maintain building floor plans and corresponding space data and the campus building inventory for all owned and leased facilities.



FIS staff provides Computer Aided Design (CAD) and Revit services for the maintenance and technical support of Autodesk software throughout the campus.



FIS Geographic Information Services (GIS) staff provides mapping and data services including campus base mapping, utilities mapping, property mapping, master plan mapping and other related mapping projects.



The FIS Utilities and Mapping Coordinator provides Global Positioning System (GPS) and land surveying services for the collection, field verification, and maintenance of utilities, civil infrastructure, topographic, construction, and land boundary mapping and data.

# Space Information Management System (SIMS) Staff

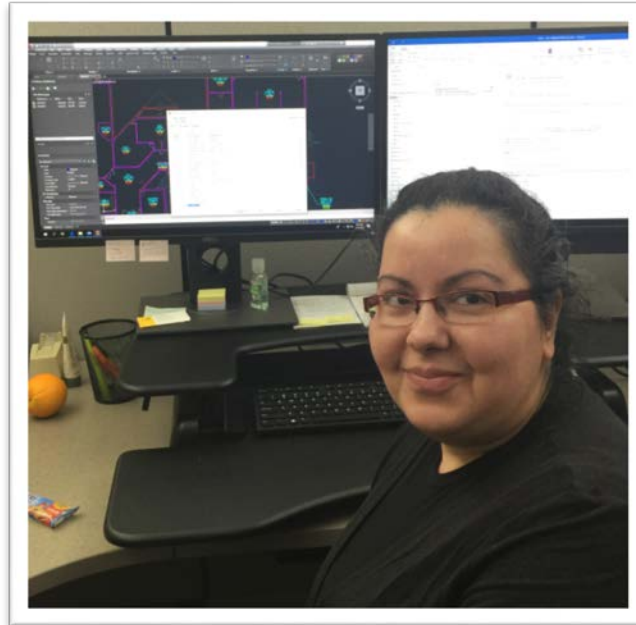
**Steve Peterson**

CAD Manager



**Mais Albaghdadi**

CAD Associate



# Utilities and Mapping Services (GPS) Staff

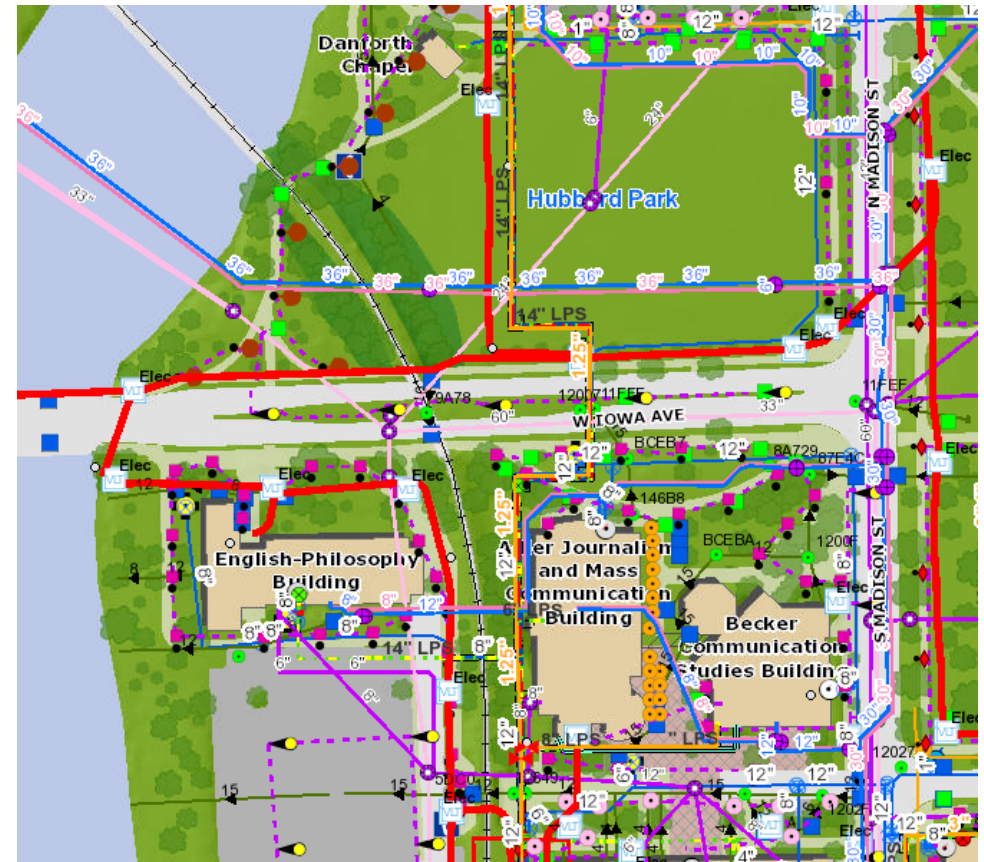
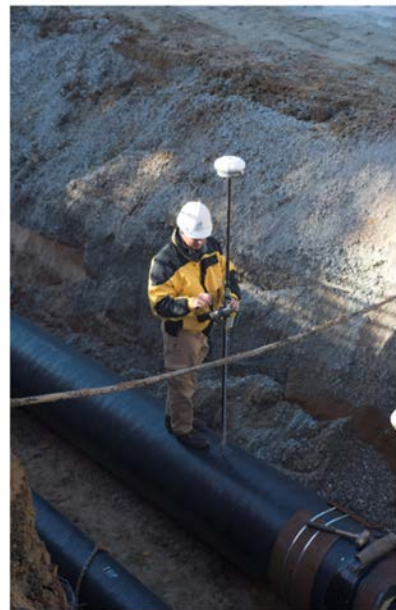
## Doug Moore

Utility and Mapping  
Coordinator



## Matt Wieland

GPS Technician  
(Student Worker)



# Geographic Information Services (GIS) Staff

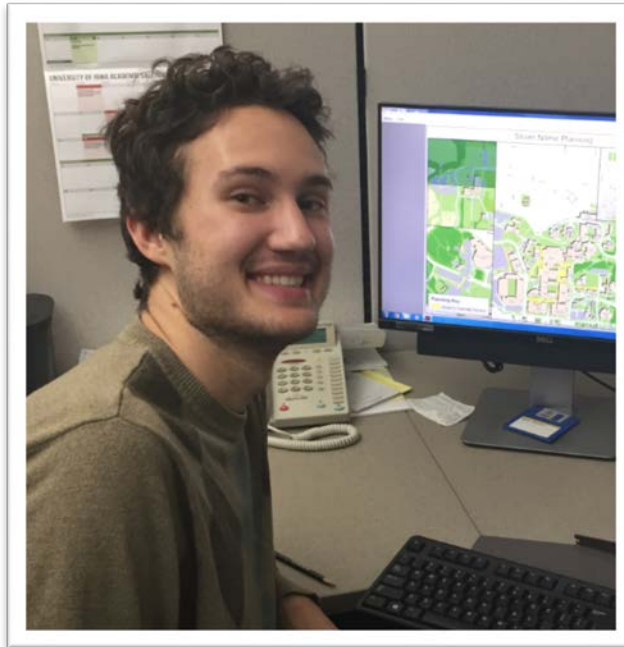
**Jay Geisen**

GIS Analyst

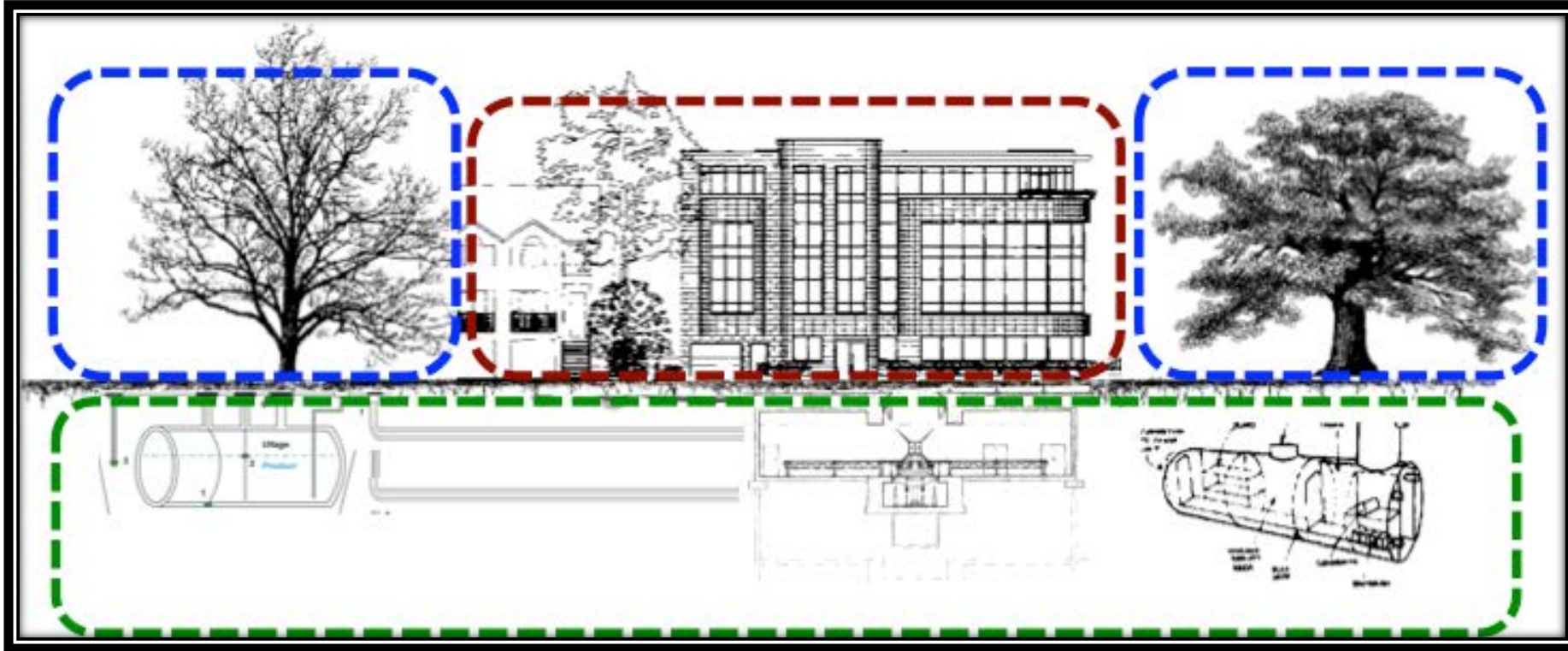


**Ben Peters**

GIS Technician







## University Facilities, Lands, and Infrastructure

### Interesting Facts

## University Facilities, Lands, and Infrastructure

- ▶ 378 Buildings Totaling 21.1M Gross Sq. Ft.
- ▶ Land Totaling 2,112 Acres Owned and 397 Acres Leased
- ▶ Maintained Land Totaling 1,900 Acres
- ▶ 8,000 Trees on Main and Oakdale campuses in Maintained Areas
- ▶ 36 miles of Institutional Roads

# Space Information Management System (SIMS)

- ▶ FIS administers University building names, addresses, room numbering, and assists with interior and exterior signs.
- ▶ **SIMS** houses the University's building information, building floor plans, and corresponding space data for all University buildings, owned and leased.
- ▶ Building and room inventory data is made available to authorized users via SIMS and the University Data Warehouse (**DWPROD**).
- ▶ **Floor plans** are available to authorized users via the cloud-based UI Active Visual System operated by the Advanced Technologies Group (**ATG**).
- ▶ SIMS Staff conducts building **space surveys** to verify accuracy of floor plans, room use, department occupancy, and other associated data.



SIMS Building Information Screen

Building Number  Building Name

Gilmore Hall - 0038

Retrieve Building

Building Name:	Gilmore Hall		
Building #:	0038	Abbreviation:	GILH
Gross SQFT:	43,892	Net Usable Area:	38,718
Net Assignable SQFT:	21,450	Nonassignable SQFT:	17,268
		Year Built:	1910
		Structural Area:	5,173

Site	Main Campus	Bldg Number	0038
Abbreviation	GILH	Building Name	Gilmore Hall
Common Name	Gilmore Hall	Status	ACTIVE
Address	112 North Capitol Street	City	Iowa City
State	IA	Zip	52242
Campus Location	East Campus	District	East Campus
Ownership Category	General University	Owned	Owned
Type Code	Level 3	Year Built	1910
Year Acquired		Fiscal Year Razed	
Date Leased		Date Lease Ended	
Maintenance FM AREA 1		Custodial	FM AREA 1B
Electrical Service	UI ELECTRICAL DISTRIBUTION - RTM	Steam Service	UI STEAM SYSTEM - RTM
Natural Gas	N/A	Chilled Water	UI CHILLED WATER SERVICE - RTM
Domestic Water	UI DOMESTIC WATER SERVICE	Sanitary Sewer	IOWA CITY WASTEWATER DIVISION
Access Services	AMAG	Data Services	UI DATA AND VOICE
Sprinkler Provider	UI Fire & Life Safety	Sprinkler Backflow	UI Fire & Life Safety
Fire Alarms	UI Fire & Life Safety	Extinguishers	UI Fire & Life Safety
Water Backflow	UI Fire & Life Safety	Clery Classification	On Campus
Ground Care FM LANDSCAPE SERVICES		Fire Department	IOWA CITY FIRE DEPT.
Police Department	UI CAMPUS POLICE	Property Insurance	BUILDING AND CONTENTS
Gross SQFT	43,892	Building Hours	

# SIMS Building Inventory

### Details of Lease : Linn Street Place

Building Abbreviation :	LSP
Lease Name :	Linn St. Place - 332 S Linn St. Suite 100 &34 RVAP
Building Status :	ACTIVE
Address :	332 South Linn Street, Suite 100
City :	Iowa City
State :	IA
Zip :	52240
Lease Extension Option :	n/a
Square feet :	1,983 GSF
Rate per square feet :	
Occupant :	Main Campus
Primary Usage :	Office Space
Landlord Name :	Linn Street Place
Type of Lease :	Building Lease
Original Lease Start Date :	07/01/2010
Current Lease Start Date :	07/04/2016
Lease End Date :	06/30/2019
Renewal Notification :	Not Set
Holdover :	No
Current Lease Extension :	No

# UI Lease Inventory

# Space Information Management System (SIMS)

- ▶ SIMS-ATG:
- ▶ Intuitive web portal to floor plans
- ▶ Data presented in visual layouts linked directly to CAD databases.

[https://www.atginc.com/\(S\(3r2xk30jfxembe1wfarvgqvn\)\)/LoginIowa.aspx](https://www.atginc.com/(S(3r2xk30jfxembe1wfarvgqvn))/LoginIowa.aspx)



## University of Iowa Login

Access your facility information now. Please click on the Log In button below

Log in

By clicking **Log in**, you acknowledge agreement with the latest **Terms and Conditions** ([click here to view](#)).



### Not registered?

Access the AVS by setting up a new user account. [Register](#)



### Need someone else to register?

Send registration information to others via email. [Email](#)



### Need technical assistance?

Call the ATG Technical Support line at: **630-829-8950**

HawkID Login for [www.atginc.com](http://www.atginc.com)



HawkID

Password

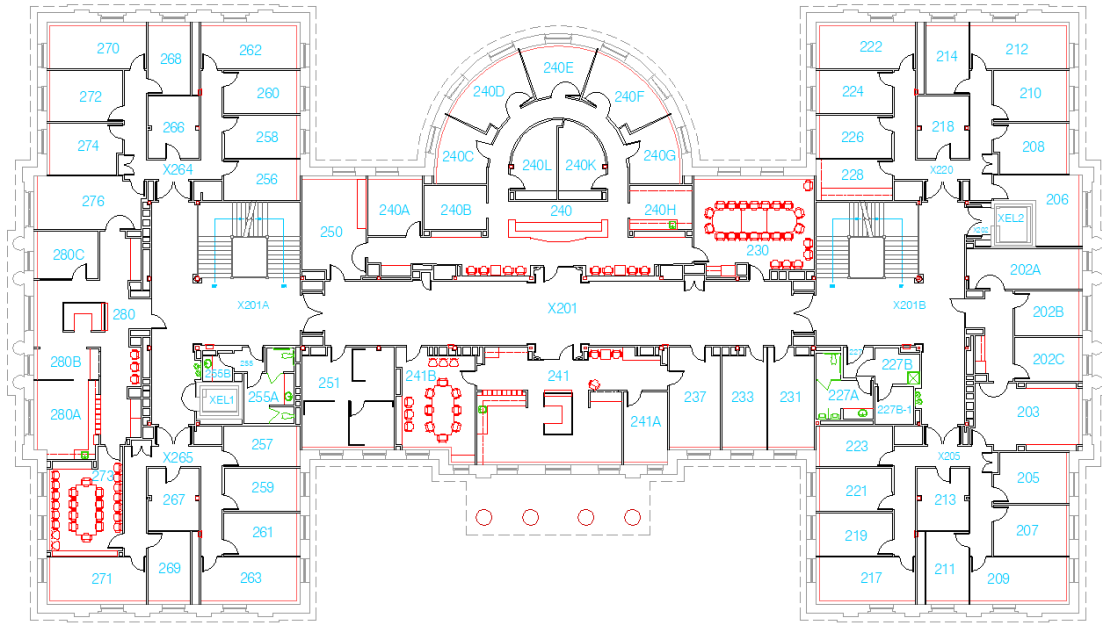
Log In

[Forgot your HawkID or password?](#)

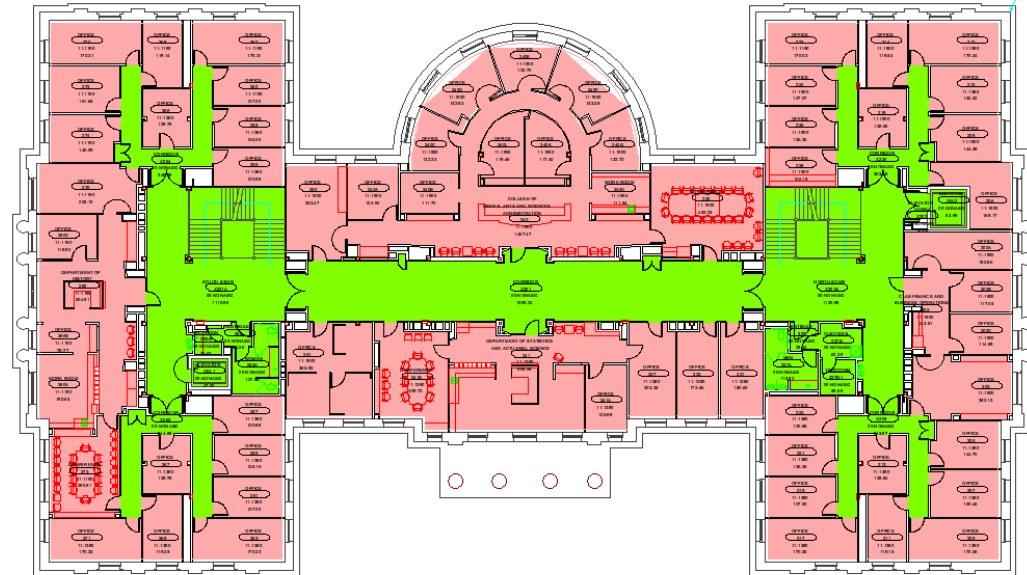
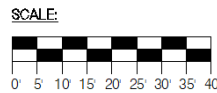
You will be logged in to this service securely. Information which will allow you to access the site you requested will be transmitted to the site. This information will be encrypted before it is sent. Please see the ITS Help Desk [Shibboleth support pages](#) for additional information.

Please contact the [ITS Help Desk](#) for assistance, questions, or concerns.

# SIMS – ATG Floor Plans

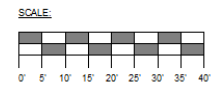


The University of Iowa  
**SCHAEFFER HALL**  
**SECOND FLOOR**  
 Bldg No. 0002 02/20/2016 File: 002AR02

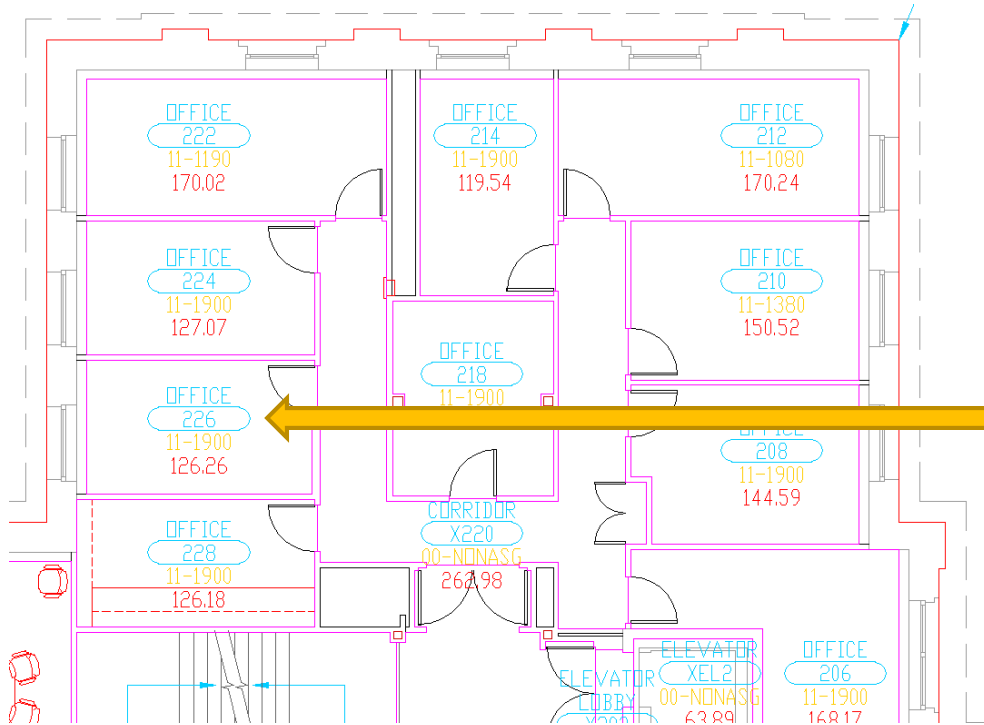


Color	Room Description	Net Area (S.F.)
Light Red	ASSIGNABLE	12,647.36
Light Yellow	GROSS	0.00
Light Green	NONASSIGNABLE	5,120.84

The University of Iowa  
**SCHAEFFER HALL**  
**SECOND FLOOR**  
 Bldg No. 0002 02/20/2016 File: 002AR02



# SIMS – ATG Floor Plans



Field	Values
Site	MAIN CAMPUS (EAST)
Building	0002 SH
Floor	02
Room Number	226
Room Name	OFFICE
Responsibility Center	1900-00000
Responsibility Center Description	LIBERAL ARTS AND SCIENCE ADMIN
Department	11-1900
Department Description	LIBERAL ARTS AND SCIENCE ADMIN
Room Description	ASSIGNABLE
Space Definition	310 - OFFICE
Use Code	310005
Use Description	OFFICE - PROFESSIONAL STAFF
Function Code	1.4
Function Description	AA - ACADEMIC SUPPORT
Division	COLLEGE OF LIBERAL ARTS AND SCIENCES
Occupant	BUCK, EUGENE
Occupancy	1
Date Modified	01/30/2017
Floor Type	CARPET
Custodial Service Level	MONTHLY
Recent Project	UI PROJECT 92828 - SCHAEFFER HALL REMODELING AND RENEWAL (1998)
Suite/Zone	CLAS ADMINISTRATION
Net S.F.	126.26
DRAWING	002SP02.dwg



# Space Type Breakdown:

Postsecondary Education Facilities Inventory and Classification Manual, National Center for Education and Statistics (FICM)

The National Center for Education and Statistics (NCES) provides secondary institutions a guideline to follow when assigning room types, functions and areas.

University Space and UIHC Space (FY2018)						
Space Use Code	Space Use Description	UI Net Assignable Sq. Ft.	UIHC Net Assignable Sq. Ft.	Campus Total Net Assignable Sq. Ft.	% of Total (Excl. Residential)	% of Total
000	Unclassified Facilities	186,968	172,454	359,422	3.00%	2.71%
100	Classroom Facilities	348,803	5,320	354,123	2.95%	2.67%
200	All Laboratory Facilities	1,589,479	34,141	1,623,620	13.55%	12.25%
210-225	<i>Teaching Labs</i>	416,823	11,463	428,286	3.57%	3.23%
250-255	<i>Research Labs</i>	1,172,656	22,678	1,195,334	9.97%	9.02%
300	Office Facilities	1,975,608	988,793	2,964,401	24.73%	22.36%
400	Study Facilities	544,464	15,264	559,728	4.67%	4.22%
500	Special Use Facilities	1,244,591	294	1,244,885	10.39%	9.39%
600	General Use Facilities	778,756	103,980	882,736	7.37%	6.66%
700	Support Facilities	2,126,691	97,713	2,224,404	18.56%	16.78%
800	Health Care Facilities	65,139	1,706,194	1,771,333	14.78%	13.36%
	<b>Subtotal:</b>	<b>8,860,499</b>	<b>3,124,153</b>	<b>11,984,652</b>	<b>100.00%</b>	
900	Residential Facilities	1,250,005	21,966	1,271,971		9.59%
	<b>TOTAL NASF:</b>	<b>10,110,504</b>	<b>3,146,119</b>	<b>13,256,623</b>		<b>100.00%</b>

# Utility and Mapping Services (GPS)

- ▶ The Utilities and Mapping Coordinator works closely with Facilities Management and ITS Physical Operations to collect, and field verify and manage the CAD drawings of utilities, equipment, civil, topographic features and infrastructure spatial data and attributes.
- ▶ The GPS team works with the GIS Analyst to use this data to develop informational maps which provide survey-grade data to University staff and project design professionals.
- ▶ The GPS team is also responsible for maintaining and overseeing the Global Positioning System equipment and operation.

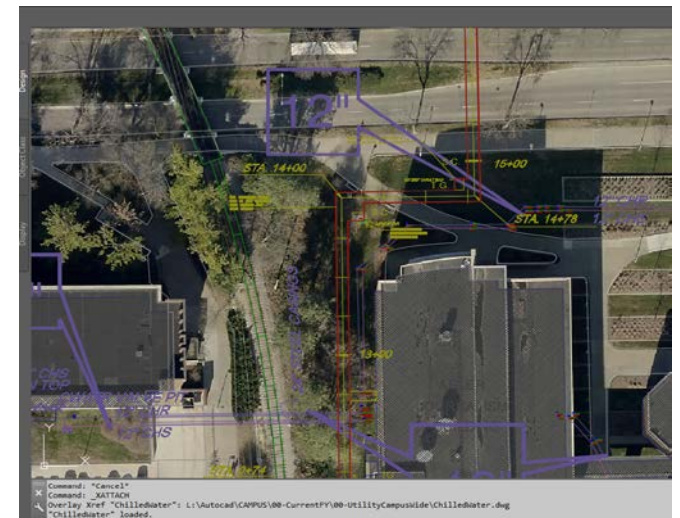


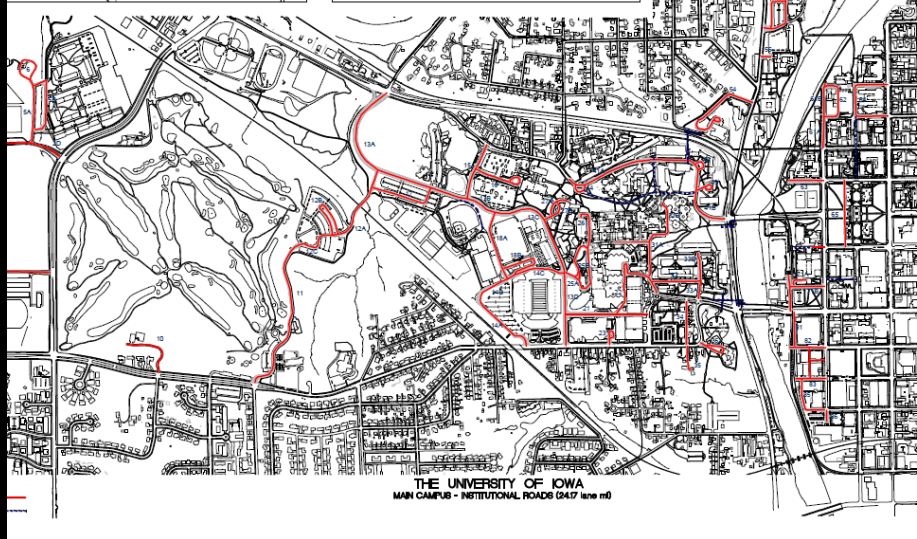
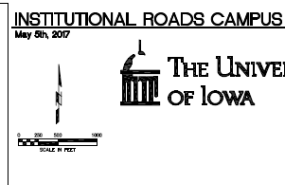
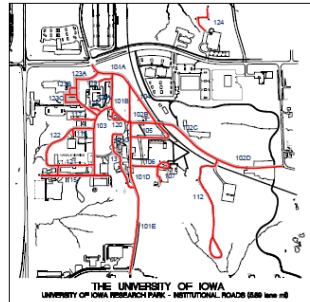
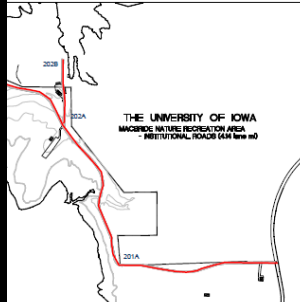
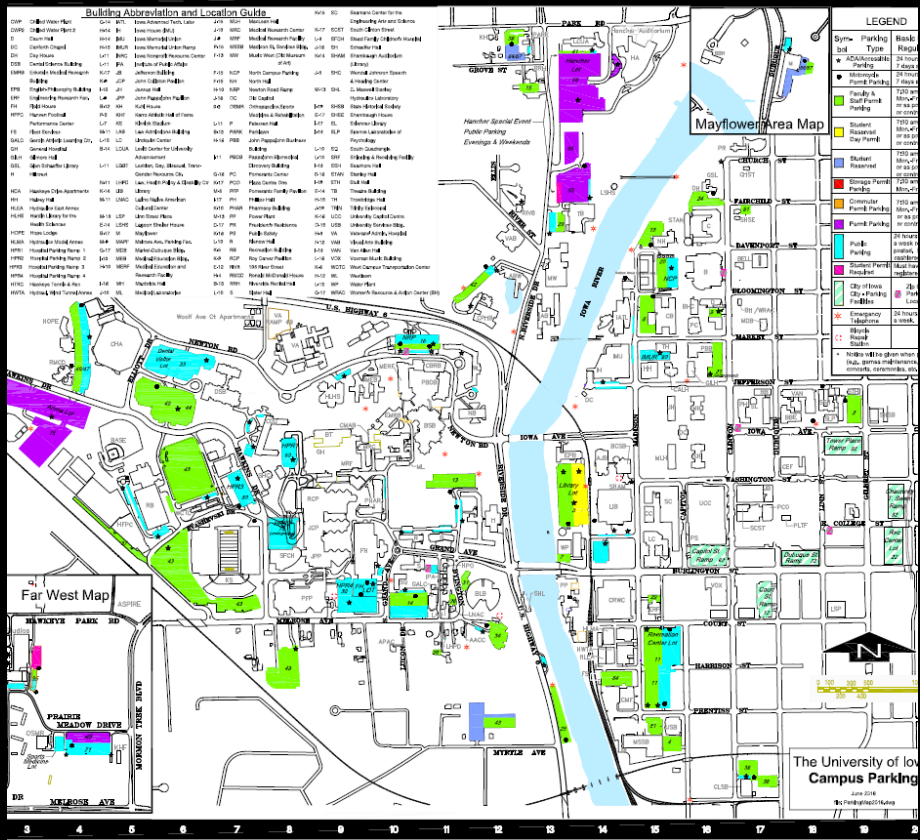
# Utility Surveying and Mapping



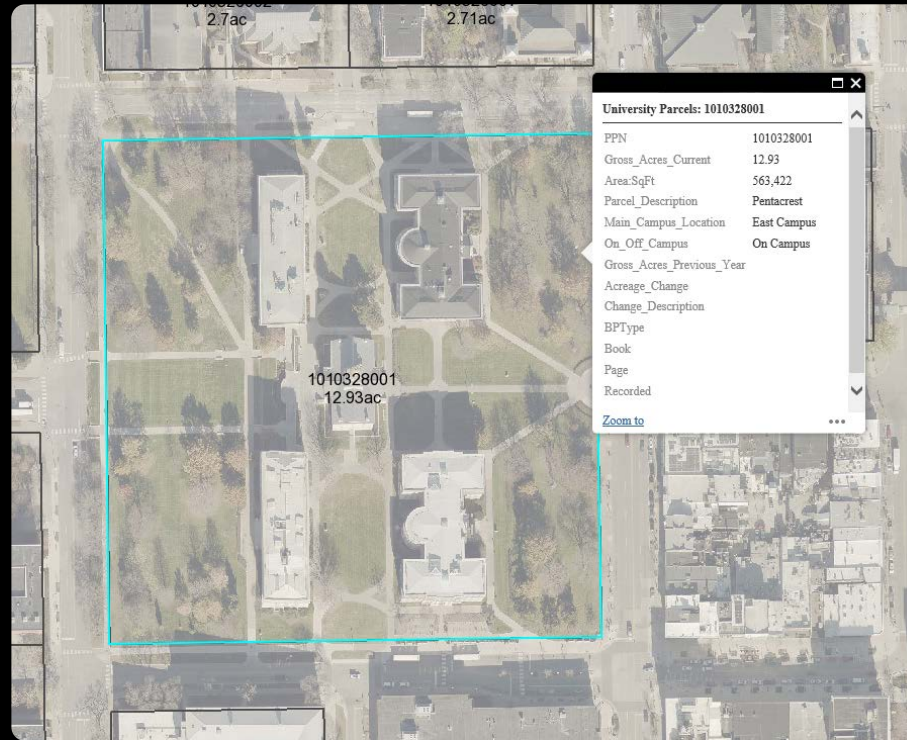
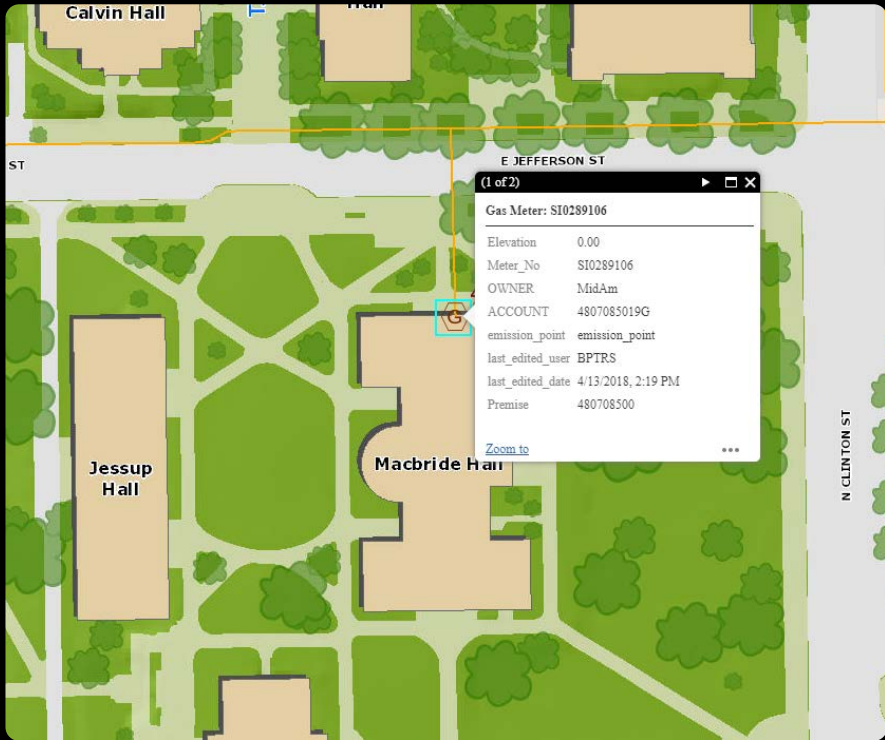
## Utility and Mapping Services

- Support utility infrastructure development. Survey, locate, and record data for all known utilities.
- Maintain and verify land records.
- Strengthen and improve process to join utility data and GIS data and scripts





# Utility Surveying and Mapping



# Utility Surveying and Mapping

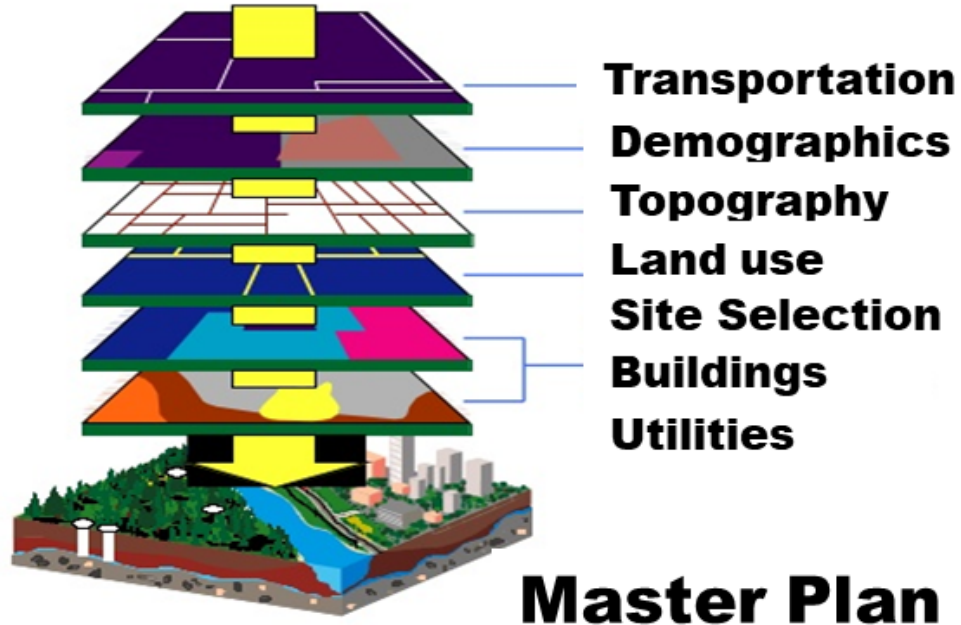
# Geographic Information Services (GIS)

- ▶ GIS is a system used to capture, manage, analyze, and display data and associated attributes which are geographically referenced and used to support the utilities, facilities, campus planning, and land use management of the University.
- ▶ GIS acts as a centralized unifying platform for collecting, integrating and managing large sets of structured and unstructured data from different sources to support operations and planning.

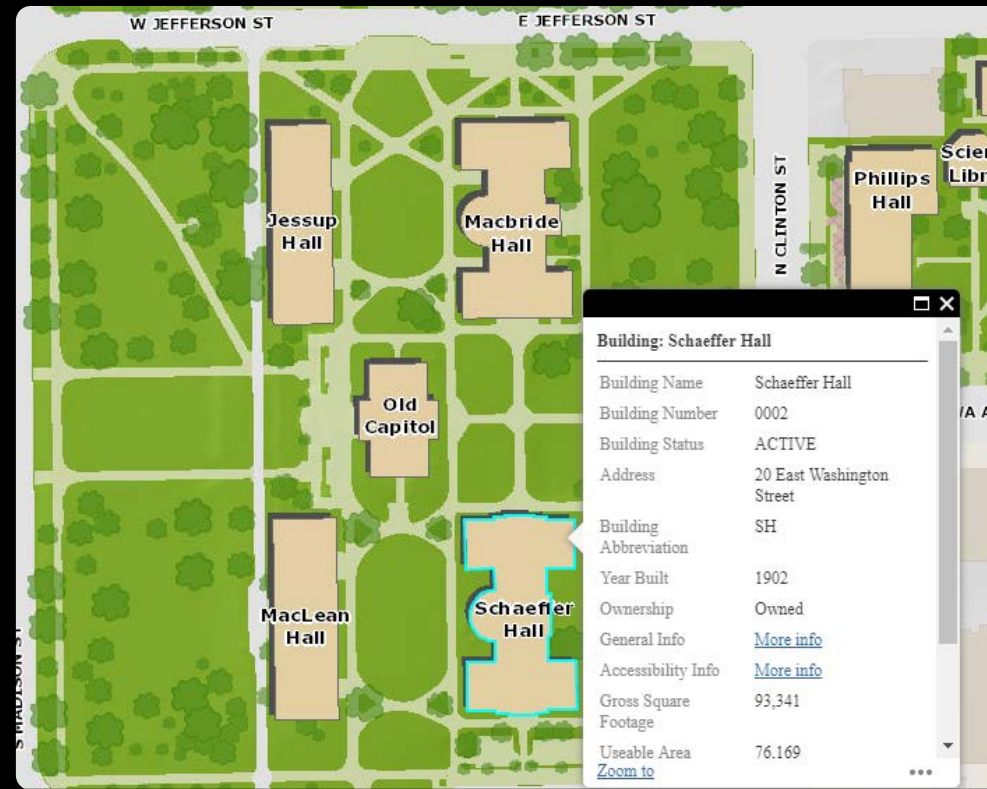
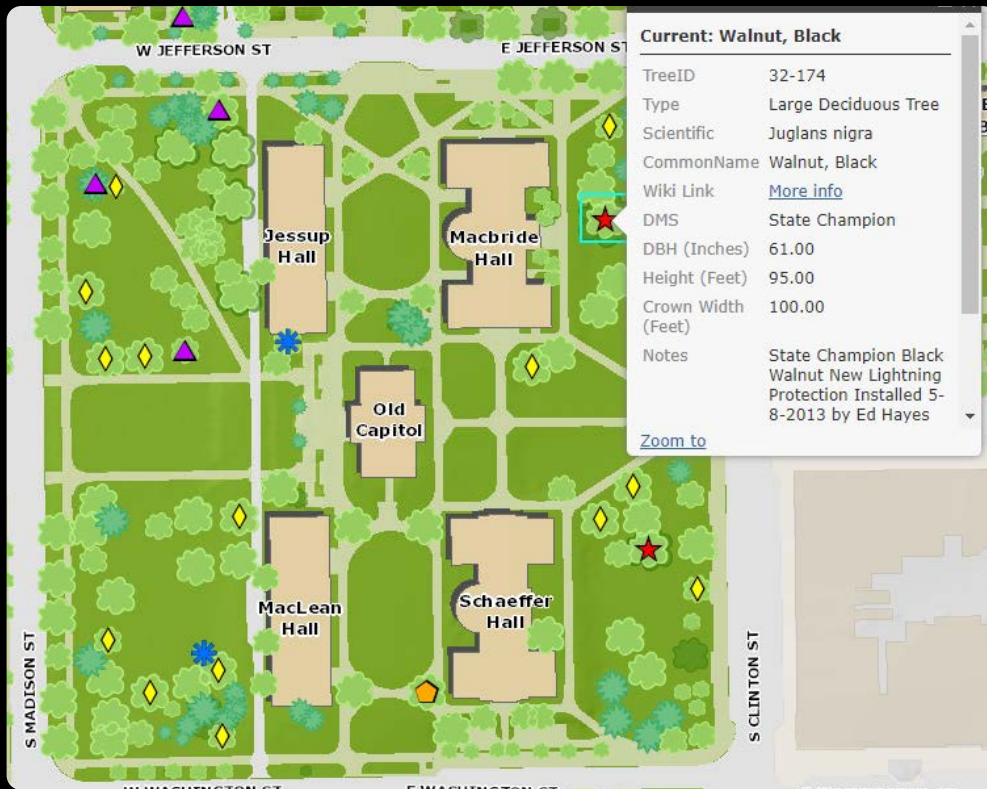


# Geographic Information Services (GIS)

## GIS is a tool to see the whole



- ▶ **Data** is the fundamental component of GIS and the power of GIS is determined by its ability to relate different **data in a spatial context** and to reach a conclusion about the relationship.
- ▶ A combination of two data types: **spatial (location data)** and **attributes (descriptive data)** are related and presented visually by means of an interactive user interface, GIS Software, using raster and vector graphics.
- ▶ **Aerial photographs** and satellite images are generally in raster format.
- ▶ **Vector graphics** are commonly used to represent features such as roads, rivers, buildings and other infrastructure or assets using points, lines and polygons. Based on scalable vector graphics, vector graphics provides a linear and detailed approach to manipulating attribute data.



# Geographic Information Services (GIS)





# Geographic Information Services (GIS)

# Geographic Information Services (GIS)



## Additional Maps

### ACCESSIBILITY

[Accessible Paths, Entrances and Parking](#)

### ACCESS & CONSTRUCTION CLOSURES

[Construction Closures Map](#)

### ART

[Art on Campus Map](#)

### BIKE PATHS, RACKS, STATIONS

[Bicycle Infrastructure](#)

### BUILDINGS WITH AERIAL PHOTOS

[Building Information Map \(aerials can be turned off or on\)](#)

### PRINTABLE CAMPUS AREA MAPS

[Main Campus Area Map \(pdf\)](#)

[Hawkeye Campus Area Map\(pdf\)](#)

[UI Research Park Map \(pdf\)](#)

[Main Campus Map with Building Numbers and Abbreviations \(pdf\)](#)

### CAMPUS ZONES

[Custodial Zones \(printable\)](#)

[Landscape Services Zones \(printable\)](#)

[Maintenance Zones \(printable\) and Contact List for Operational Areas](#)

### FLOOD MAPS

[2008 Flood Extent Map and Master Plan Map \(pages 4 and 8\)](#)

### HISTORICAL MARKER PROGRAM

[Historical Marker Map](#)

### ROADS & PARKING

[Institutional Roads Overall \(printable\)](#)

[Parking Map \(printable\)](#)

### TREE INVENTORY WEB APP

[UI Tree Inventory App](#)

### ADDITIONAL UI MAPS

[Utilities Maps \(login required\)](#)

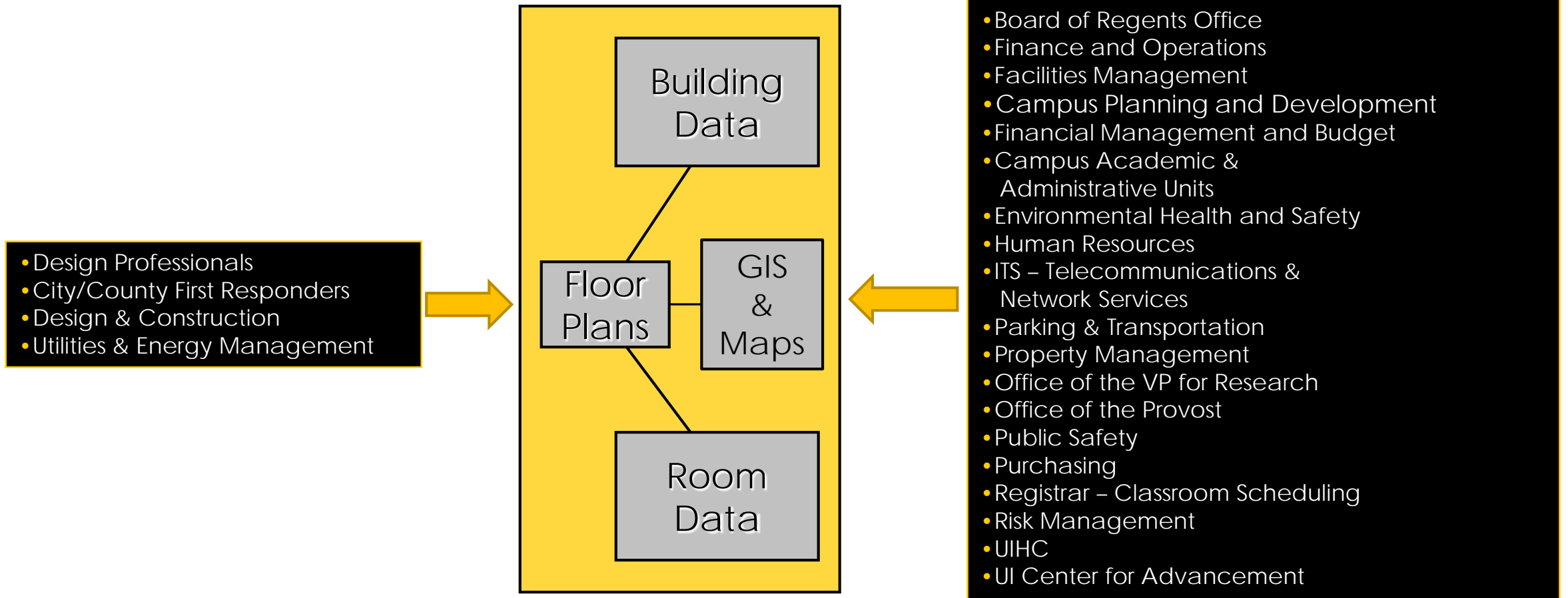
[Soil Borings & Reports](#)

### ADDITIONAL LINKS

[Johnson County Web Page](#)

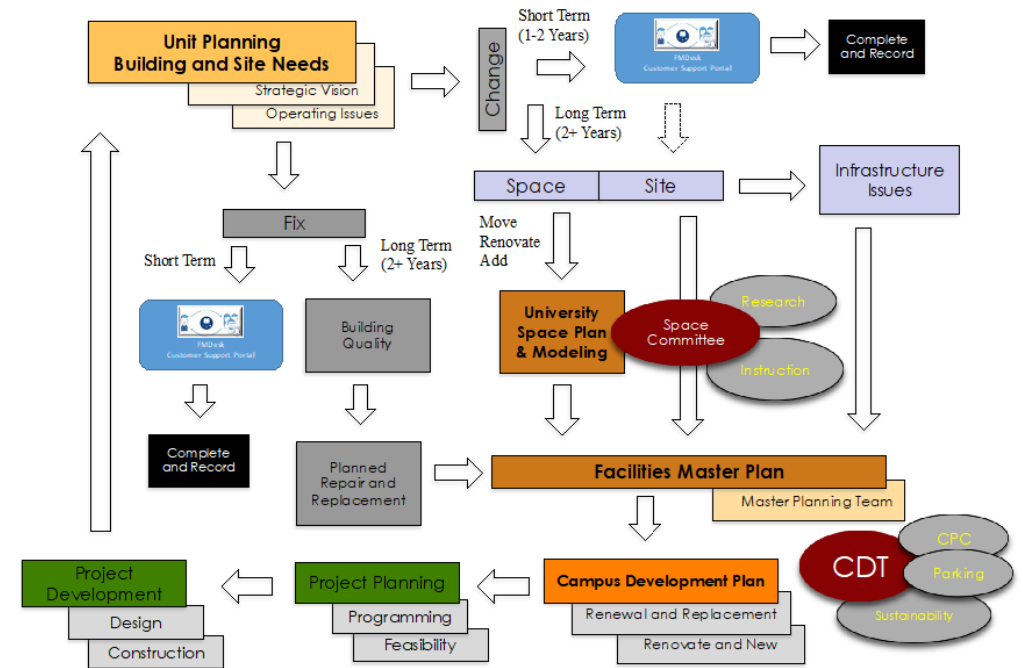
# Facilities Information Services (FIS)

## Data Users



# Space Planning and Master Planning

- ▶ FIS works directly with the University's Campus Planning and Development unit.
- ▶ This strategic partnership supports the University's space planning and management processes, administered through the Vice President of Finance and Operations.
- ▶ FIS is responsible for all records relative to space assignment and coordination.
- ▶ FIS works directly with Campus Planning and the University Space Committee providing recommendations to improve space management and utilization.
- ▶ FIS utility and mapping services supports the University's master planning and other facility planning efforts.





QUESTIONS?