

GEF BUILDING IF YOU HAVE QUESTIONS ON A BUILDING NOT LISTED, PLEASE CONTACT FM@YS VIA THE COVID BUTTON	BUILDING VENTILATION CAPABILITIES		SUPPLEMENTAL RISK MITIGATION TOOLS				ADDITIONAL DATA		
	CONTAINS OCCUPIED SPACES WITH FORCED VENTILATION. % of Building with Forced Ventilation. Occupancy: 50% density or less.	CONTAINS OCCUPIED SPACES WITH NO FORCED VENTILATION. % of Building with No Forced Ventilation. Occupancy: Single spaces	FULL OR PARTIAL MERV-13 FILTER UPGRADE	BUILDING AUTOMATION SYSTEM	FAULT DETECTION AND DIAGNOSTICS	PRE-OCCUPANCY PURGE	BUILDING SQUARE FOOTAGE	YEAR CONSTRUCTED	OWNERSHIP CATEGORY
Main Library	100%						427,188	1951	GEF
Bowen Science Building	100%						375,053	1972	GEF
Field House	91%	9%					334,317	1927	GEF/Athletics
Seamans Center	100%						333,901	1905	GEF
Iowa Memorial Union	87%	13%					326,729	1925	Iowa Memorial Union
Dental Science Building	100%						270,137	1973	GEF
Chemistry Building	100%						258,789	1922	GEF
Campus Recreation and Wellness Center	100%						258,199	2010	GEF/Athletics/Rec Services
Pappajohn Biomedical Discovery Building	100%						257,511	2014	GEF
Medical Education Research Facility	100%						231,144	2002	GEF
Pappajohn Business Building	100%						228,888	1993	GEF/Parking & Transportation
College of Pharmacy Building	100%						228,371	2019	GEF
Medical Laboratories	100%						228,171	1927	GEF
University Capitol Centre	100%						215,523	1981	GEF
Hawkeye Tennis and Recreation Complex	100%						196,767	2006	GEF/Athletics
Van Allen Hall	100%						195,356	1964	GEF
Boyd Law Building	100%						193,510	1986	GEF
Hancher Auditorium	100%						186,000	2016	GEF
Voxman Music Building	100%						183,902	2016	GEF
Lindquist Center	100%						174,101	1972	GEF
College of Public Health Building	100%						156,698	2011	GEF
Pharmaceutical Sciences Research Building	86%	14%					156,611	1961	GEF
Iowa Advanced Technology Laboratories	100%						144,630	1992	GEF
Eckstein Medical Research Building	100%						139,000	1988	GEF
Westlawn	54%	46%					137,239	1919	GEF
Carver Biomedical Research Building	100%						136,442	2005	GEF
Visual Arts Building	100%						136,119	2016	GEF

*As of August 16, 2020

GEF BUILDING IF YOU HAVE QUESTIONS ON A BUILDING NOT LISTED, PLEASE CONTACT FM@YS VIA THE COVID BUTTON	BUILDING VENTILATION CAPABILITIES		SUPPLEMENTAL RISK MITIGATION TOOLS				ADDITIONAL DATA		
	CONTAINS OCCUPIED SPACES WITH FORCED VENTILATION. % of Building with Forced Ventilation. Occupancy: 50% density or less.	CONTAINS OCCUPIED SPACES WITH NO FORCED VENTILATION. % of Building with No Forced Ventilation. Occupancy: Single spaces	FULL OR PARTIAL MERV-13 FILTER UPGRADE	BUILDING AUTOMATION SYSTEM	FAULT DETECTION AND DIAGNOSTICS	PRE-OCCUPANCY PURGE	BUILDING SQUARE FOOTAGE	YEAR CONSTRUCTED	OWNERSHIP CATEGORY
Theatre Building	100%						125,081	1936	GEF
Biology Building	100%						115,206	1905	GEF
Macbride Hall	70%	30%					112,772	1908	GEF
Medical Education Building	73%	27%					105,099	1919	GEF
Medical Research Center	49%	51%					95,452	1957	GEF
English-Philosophy Building	98%	2%					95,052	1966	GEF
Jessup Hall	75%	25%					94,913	1924	GEF
Schaeffer Hall	100%						93,341	1902	GEF
Hardin Library for Health Sciences	100%						92,637	1974	GEF
Phillips Hall	100%						89,850	1965	GEF
Multi-Tenant Facility	100%						89,303	1990	GEF
Nursing Building	100%						80,383	1971	GEF
Adler Journalism and Mass Communication Building	100%						79,985	2005	GEF
Maclean Hall	96%	4%					79,634	1912	GEF
Mossman Business Services Building	100%						78,369	1953	General Stores
Water Plant	100%						74,302	1965	Utilities
North Hall	40%	60%					74,278	1925	GEF
Pomerantz Center	100%						73,150	2005	GEF
Art Building West	96%	4%					72,424	2006	GEF
Old Museum of Art	100%						72,253	1969	GEF
University Services Building	100%						71,123	1999	GEF
Wendell Johnson Speech and Hearing Center	100%						68,878	1967	GEF
Psychological and Brain Sciences Building	100%						66,271	2020	GEF
Biology Building East	100%						62,347	2000	GEF
Blank Honors Center	100%						61,860	2003	GEF
Becker Communication Studies Building	100%						61,632	1984	GEF
Trowbridge Hall	100%						60,471	1916	GEF
Halsey Hall	46%	54%					60,441	1915	GEF

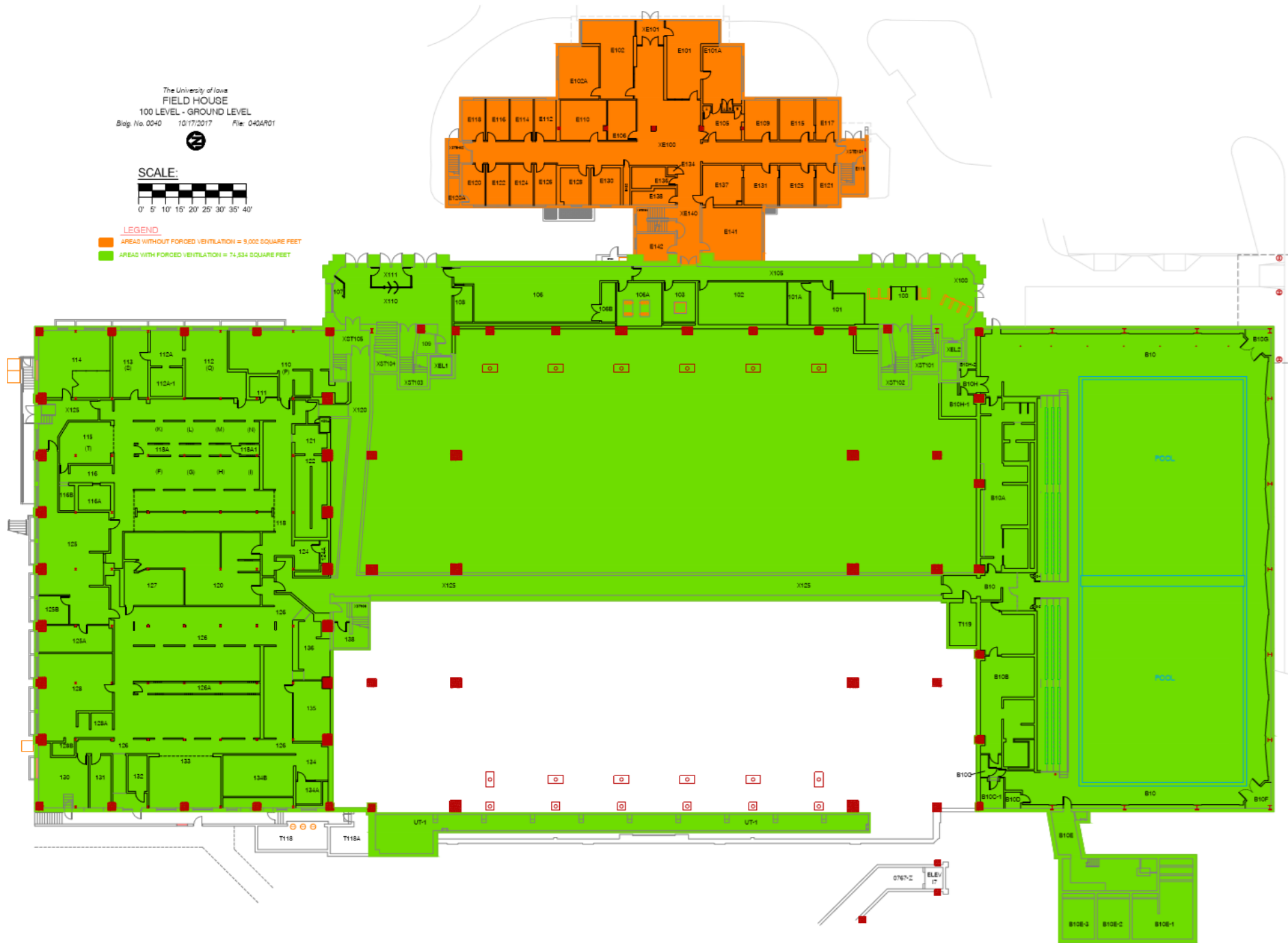
GEF BUILDING IF YOU HAVE QUESTIONS ON A BUILDING NOT LISTED, PLEASE CONTACT FM@YS VIA THE COVID BUTTON	BUILDING VENTILATION CAPABILITIES		SUPPLEMENTAL RISK MITIGATION TOOLS				ADDITIONAL DATA		
	CONTAINS OCCUPIED SPACES WITH FORCED VENTILATION. % of Building with Forced Ventilation. Occupancy: 50% density or less	CONTAINS OCCUPIED SPACES WITH NO FORCED VENTILATION. % of Building with No Forced Ventilation. Occupancy: Single spaces	FULL OR PARTIAL MERV-13 FILTER UPGRADE	BUILDING AUTOMATION SYSTEM	FAULT DETECTION AND DIAGNOSTICS	PRE-OCCUPANCY PURGE	BUILDING SQUARE FOOTAGE	YEAR CONSTRUCTED	OWNERSHIP CATEGORY
Madison Street Services Building	100%						57,440	2007	GEF
Art Building	100%		*Unoccupied			*Unoccupied	53,216	1936	GEF
Spence Labs	100%						52,287	1968	GEF
Biomedical Research Support Facility	100%						51,240	2015	GEF
Gilmore Hall	66%	34%					43,892	1910	GEF
Stanley Hydraulics Laboratory	100%						43,141	1919	GEF/College of Engineering
Jefferson Building		100%					41,700	1913	GEF
Calvin Hall	90%	10%					40,458	1885	GEF
College of Medicine Administration Building	100%						34,986	1991	GEF
Medical Research Facility	100%	-					34,675	1964	GEF
Plaza Centre One			*Leased property				30,019	1977	GEF
Old Capitol	100%						29,837	1840	GEF
South Quad	35%	65%					28,806	1942	GEF
Engineering Research Facility	100%						26,254	1986	GEF/College of Engineering
Beckwith Boathouse	100%		*Athletics managed maintenance				22,507	2009	GEF/Athletics
Stuit Hall	100%						22,267	1915	GEF
Clinton Street Building	100%						21,789	1958	GEF
Continuing Education Facility	100%		*Leased property				20,525	1911	GEF
Sciences Library	100%						12,943	1902	GEF
Dey House	23%	77%					8,636	1847	GEF

*As of August 16, 2020

The University of Iowa
FIELD HOUSE
100 LEVEL - GROUND LEVEL
Bldg. No. 0040 10/17/2017 File: 040AR01



- LEGEND
- AREAS WITHOUT FORCED VENTILATION = 9,002 SQUARE FEET
 - AREAS WITH FORCED VENTILATION = 74,534 SQUARE FEET



The following shows
FIELD HOUSE
200 LB, (WALL FLOOR)
8' high area

- LEGEND**
- AREAS WITHOUT FORCED VENTILATION = 6,402 SQUARE FEET
 - AREAS WITH FORCED VENTILATION = 138,628 SQUARE FEET



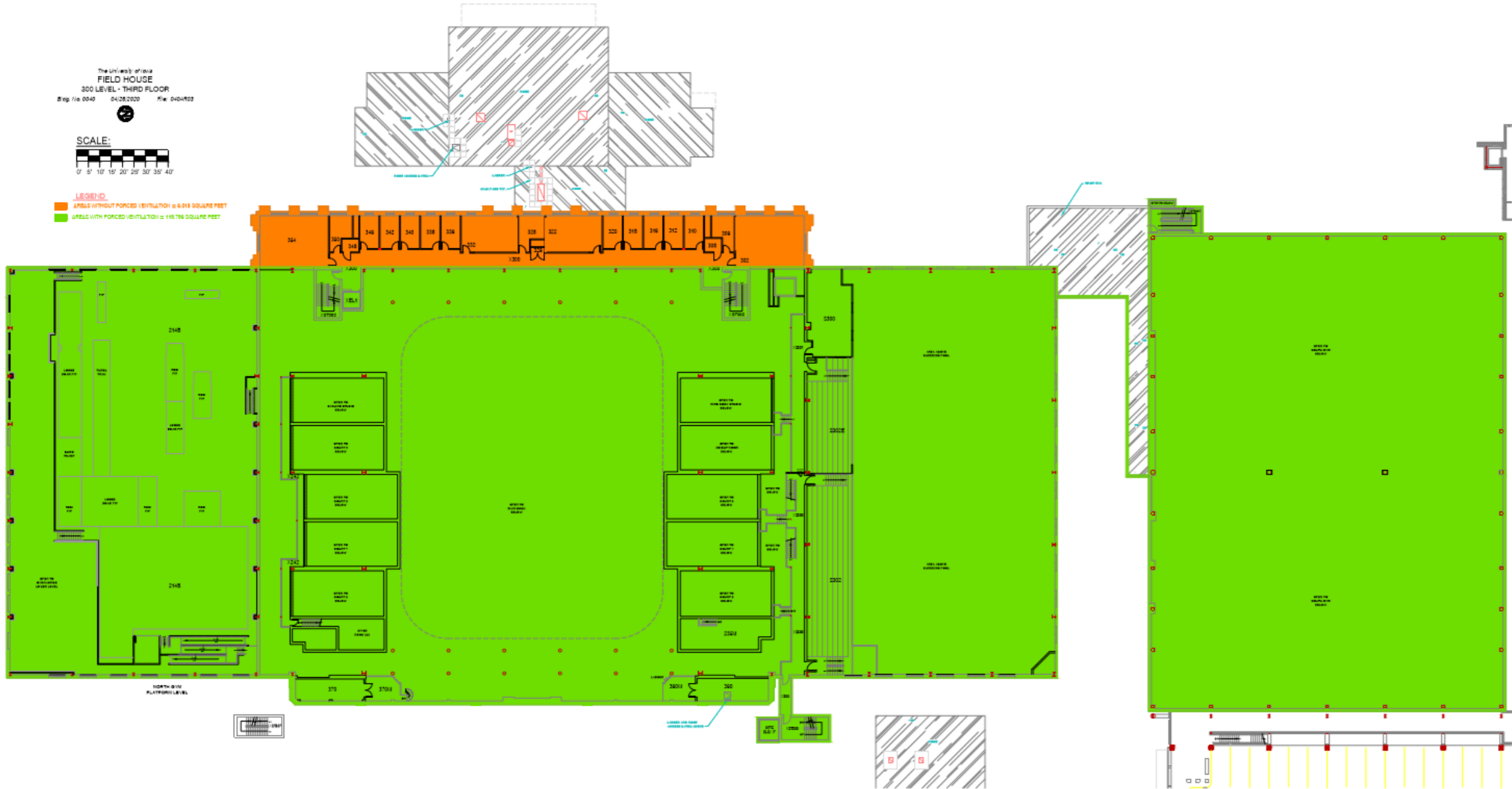
The University of Texas
FIELD HOUSE
300 LEVEL - THIRD FLOOR
Rev. 1/16/02 04/28/03 04/28/03



SCALE:



LEGEND
AREAS WITHOUT FORCED VENTILATION = 6,818 SQUARE FEET
AREAS WITH FORCED VENTILATION = 149,796 SQUARE FEET

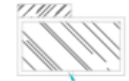




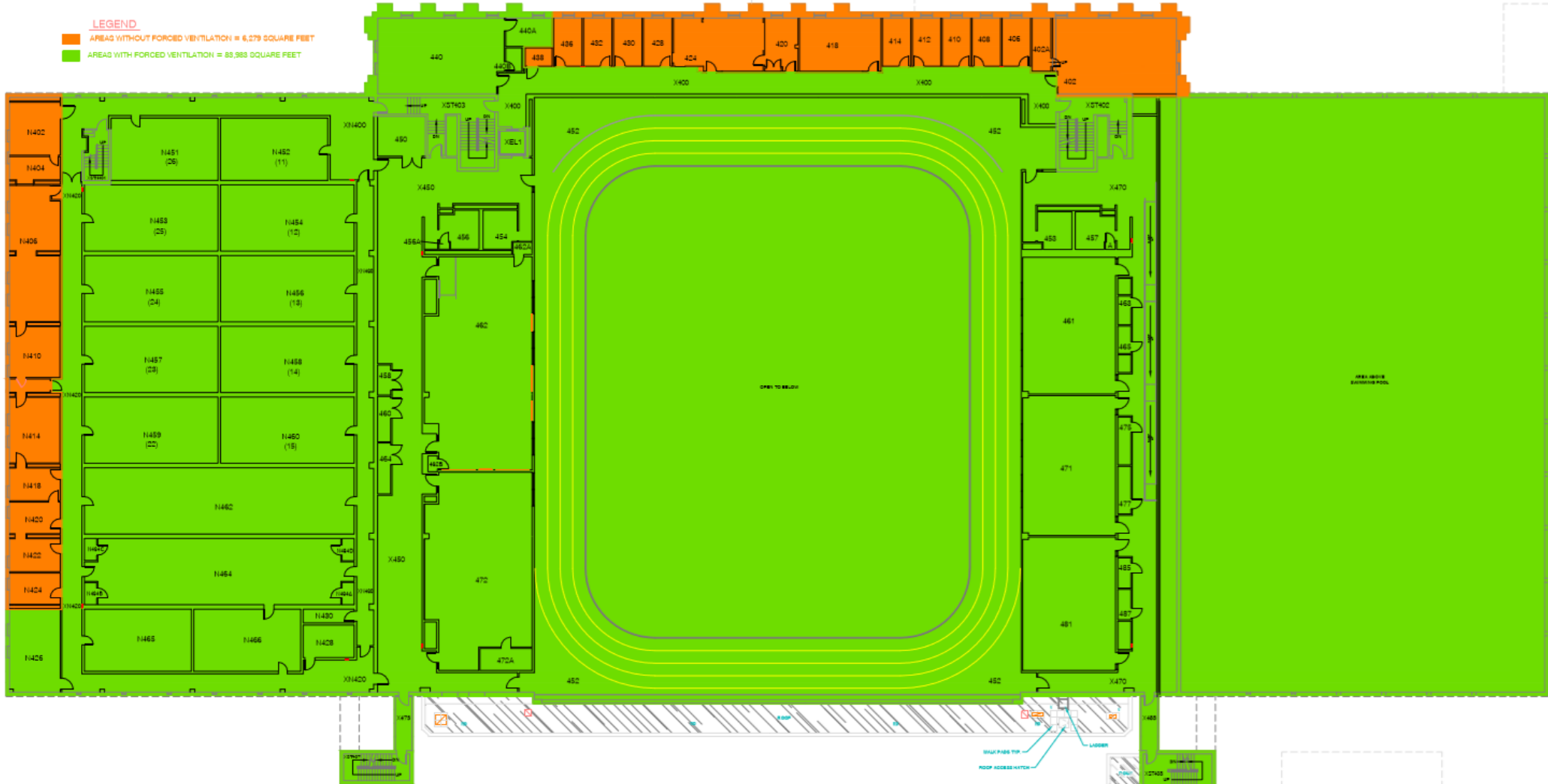
SCALE:



- LEGEND**
- AREA2 WITHOUT FORCED VENTILATION = 6,279 SQUARE FEET
 - AREA3 WITH FORCED VENTILATION = 83,383 SQUARE FEET



STAIR ROOF



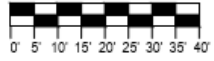
STAIR ROOF TOP
 ROOF ACCESS HATCH

LOBBY

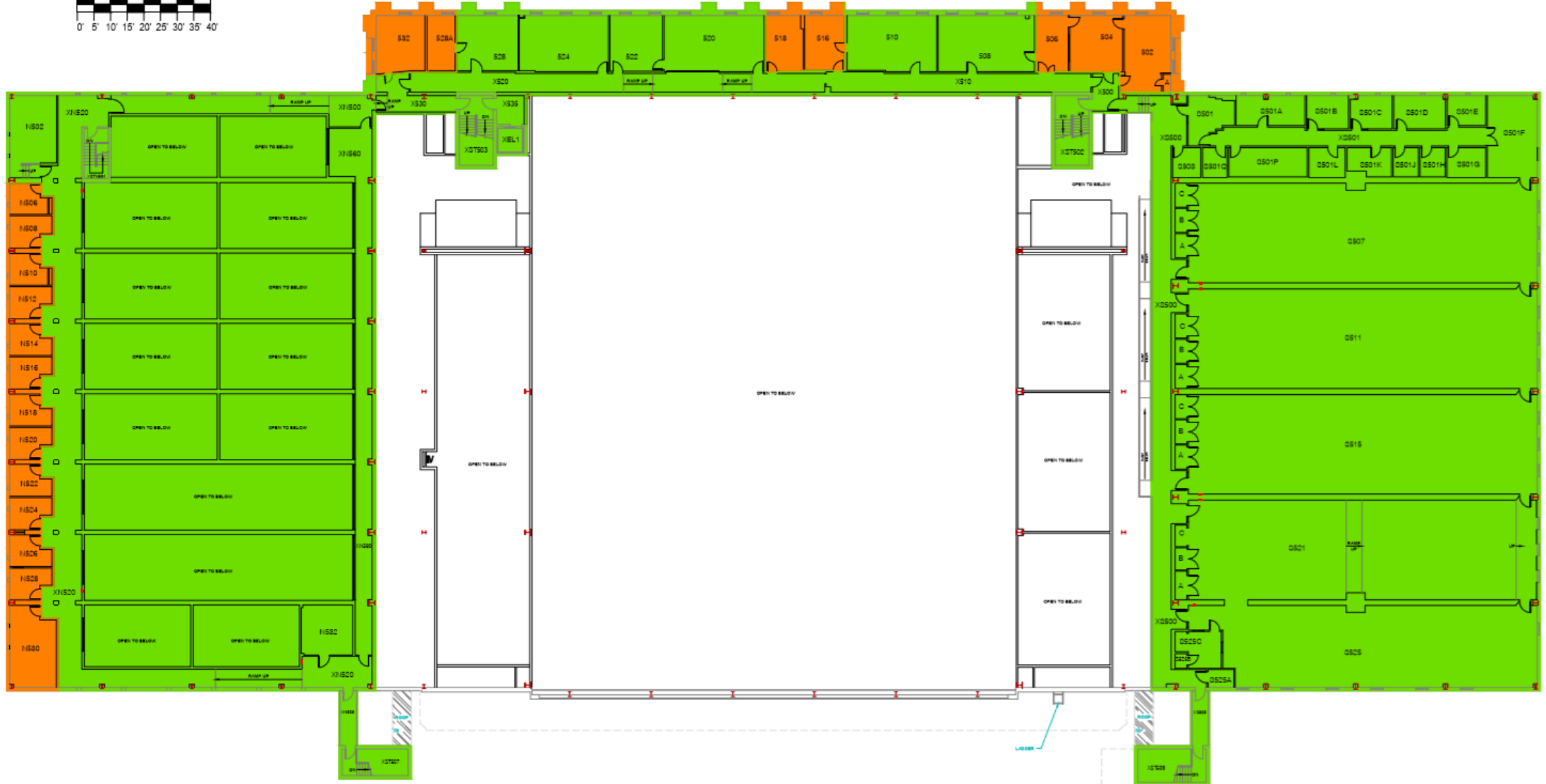
STAIR ROOF

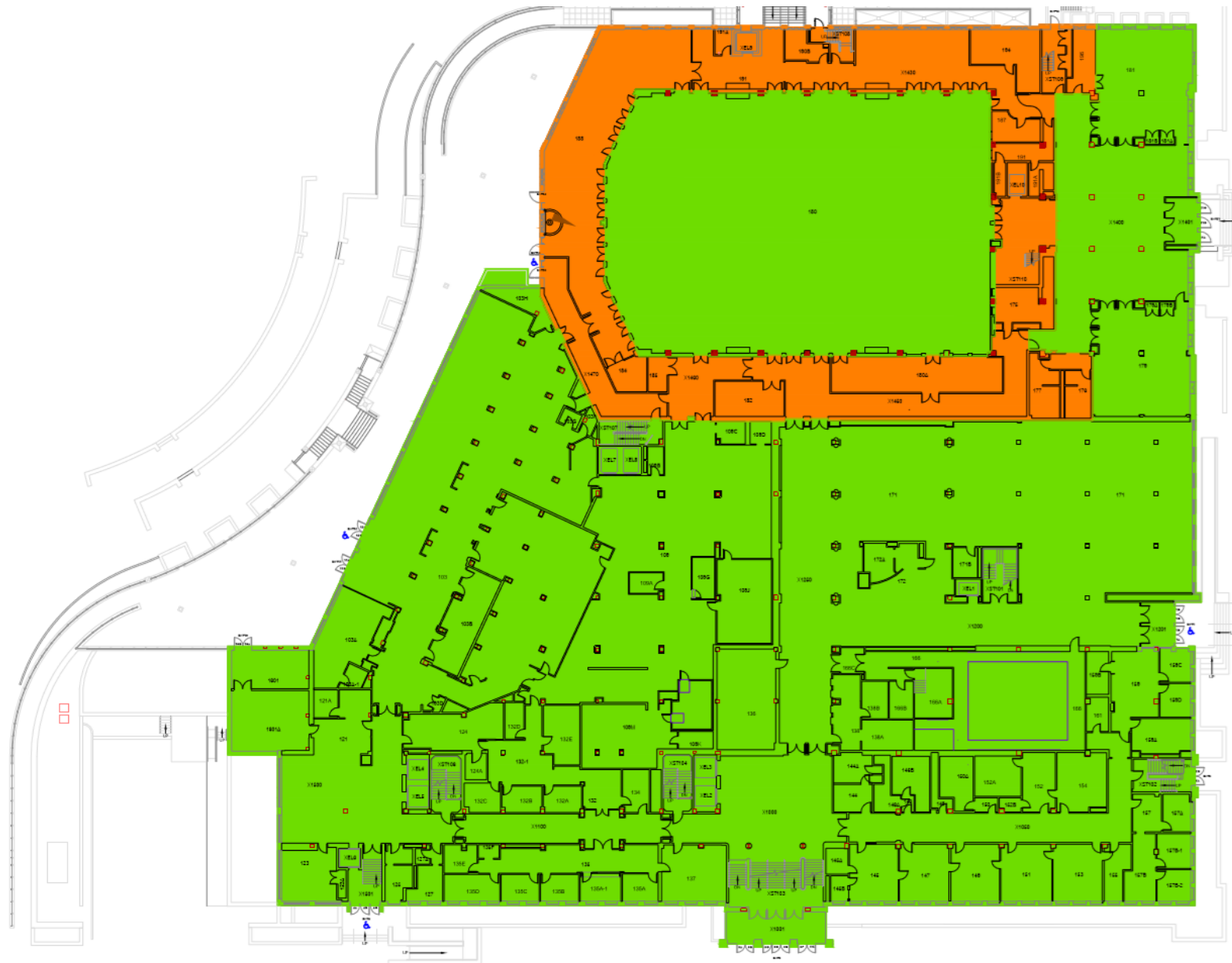


SCALE:



LEGEND
AREAS WITHOUT FORCED VENTILATION = 3,928 SQUARE FEET
AREAS WITH FORCED VENTILATION = 45,169 SQUARE FEET





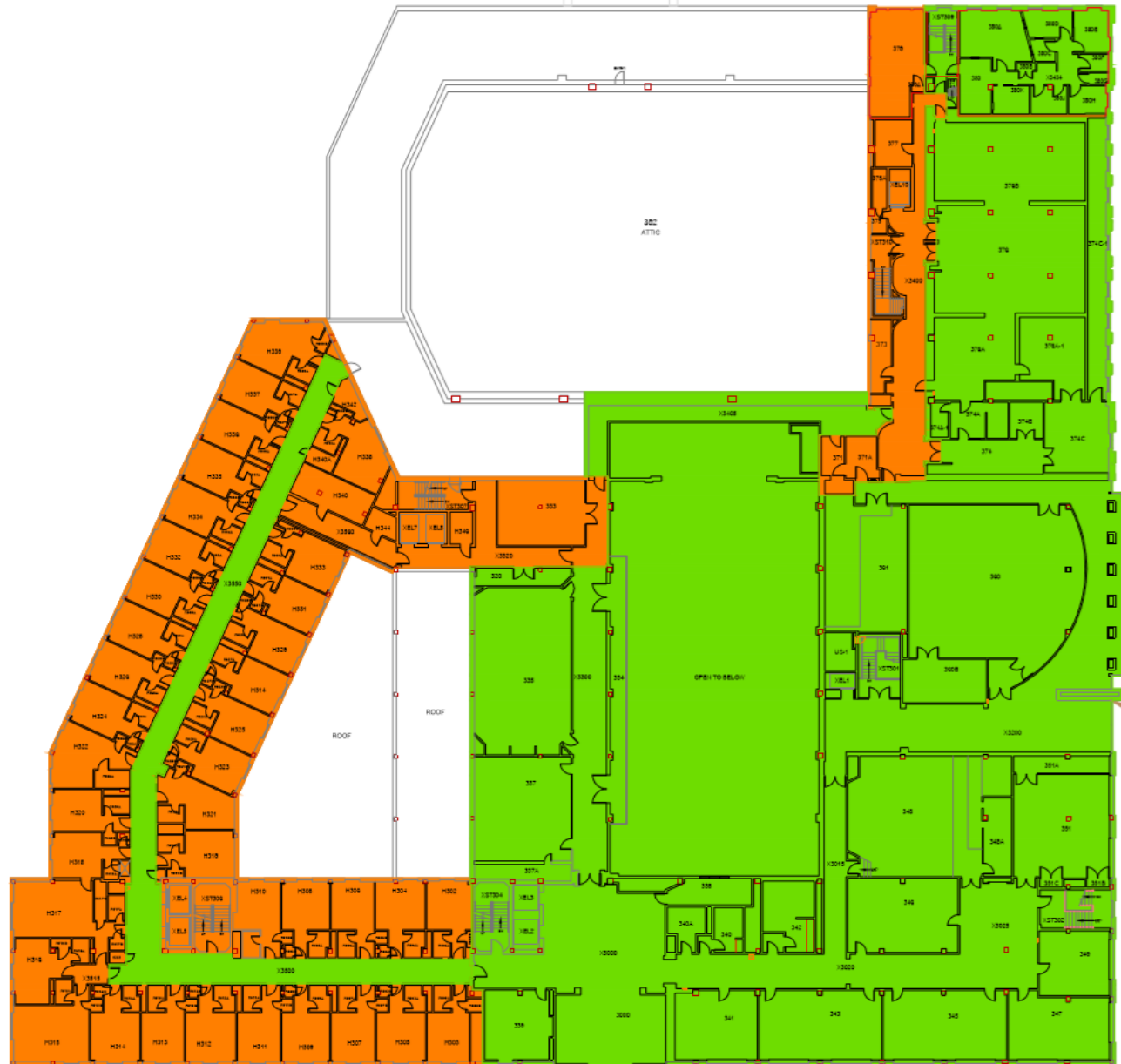
LEGEND
 AREAS WITHOUT FORCED VENTILATION = 23,803 SQUARE FEET
 AREAS WITH FORCED VENTILATION = 71,477 SQUARE FEET

The University of Iowa
IOWA MEMORIAL UNION
 FIRST FLOOR
 Bldg. No. 0046 10/29/2018 File: 046AP01



SCALE:

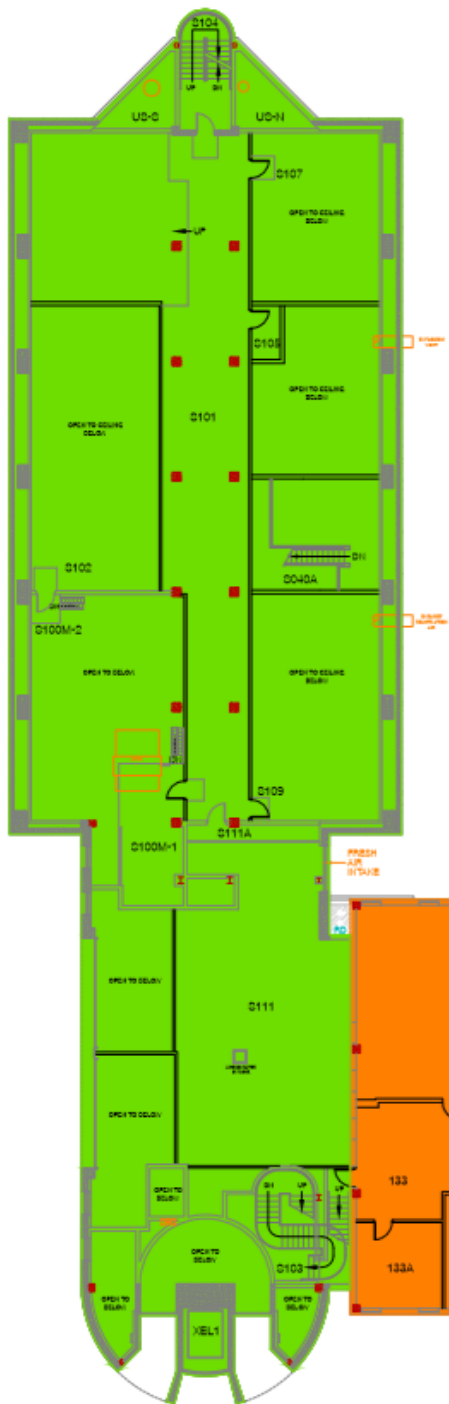




The University of Iowa
 IOWA MEMORIAL UNION
 THIRD FLOOR
 Blg. No. 0046 04/05/2018 File: 046AR03

LEGEND
 [Orange Box] AREA WITHOUT FORCED VENTILATION = 20,073 SQUARE FEET
 [Green Box] AREA WITH FORCED VENTILATION = 41,250 SQUARE FEET





The University of Iowa
PHARMACEUTICAL SCIENCES RESEARCH BUILDING
 FIRST FLOOR

Blg. No. 0000 05/13/2020 File: 006AR01

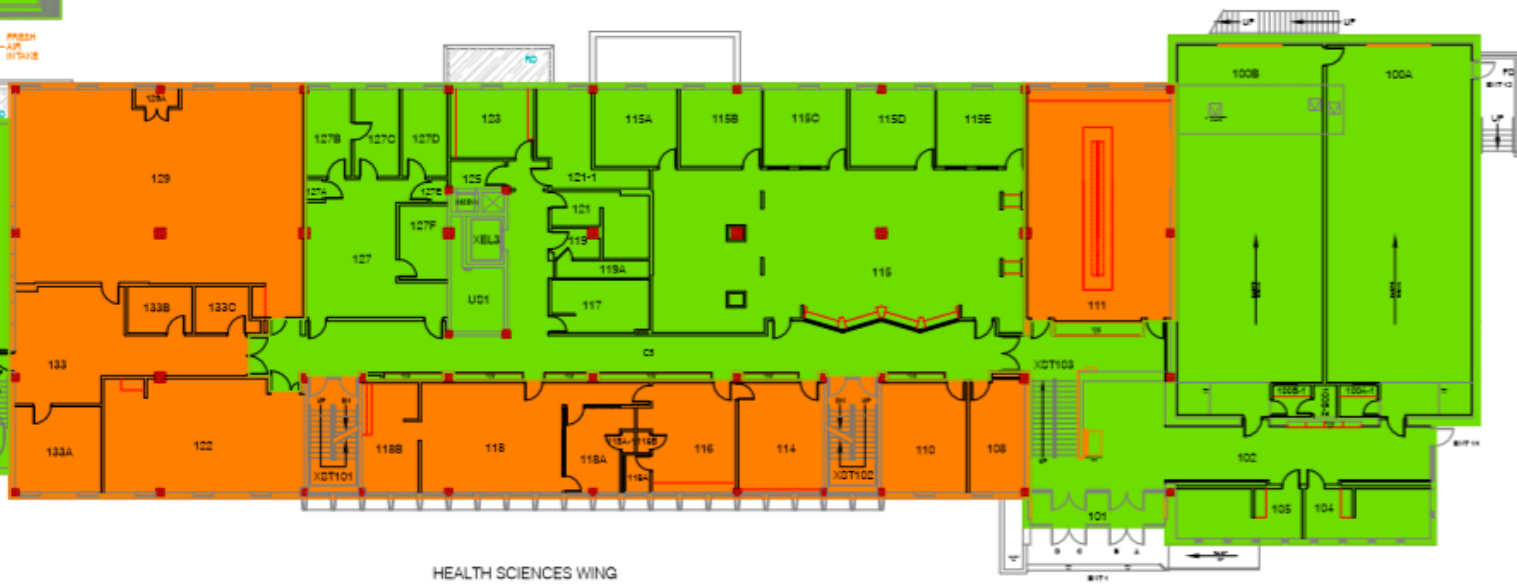


SCALE:

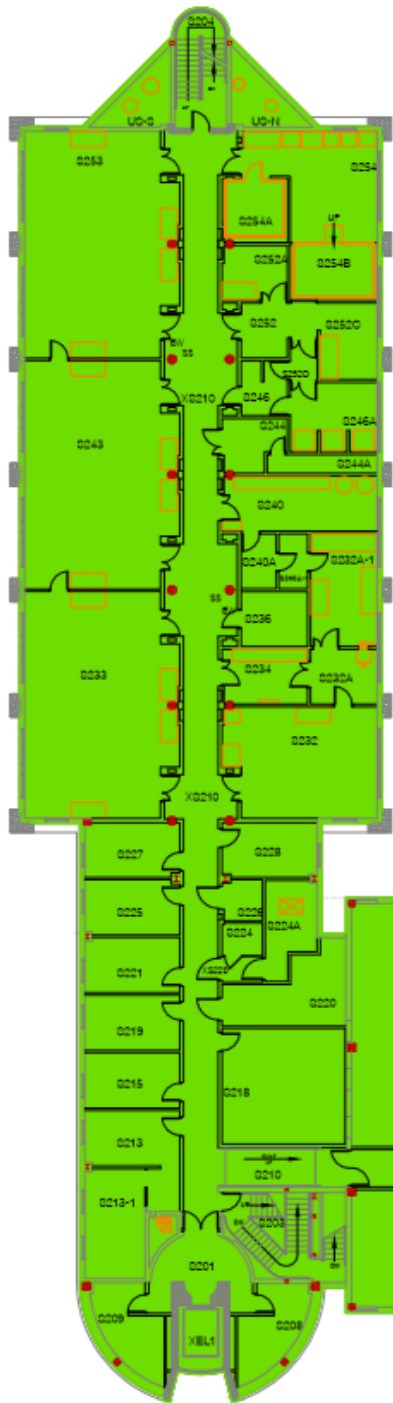


LEGEND

- AREAS WITHOUT FORCED VENTILATION = 7,315 SQUARE FEET
- AREAS WITH FORCED VENTILATION = 24,750 SQUARE FEET



HEALTH SCIENCES WING



The University of Iowa
PHARMACEUTICAL SCIENCES RESEARCH BUILDING
 SECOND FLOOR

Blg. No. 0006 12/00/2019 File: 006AR02

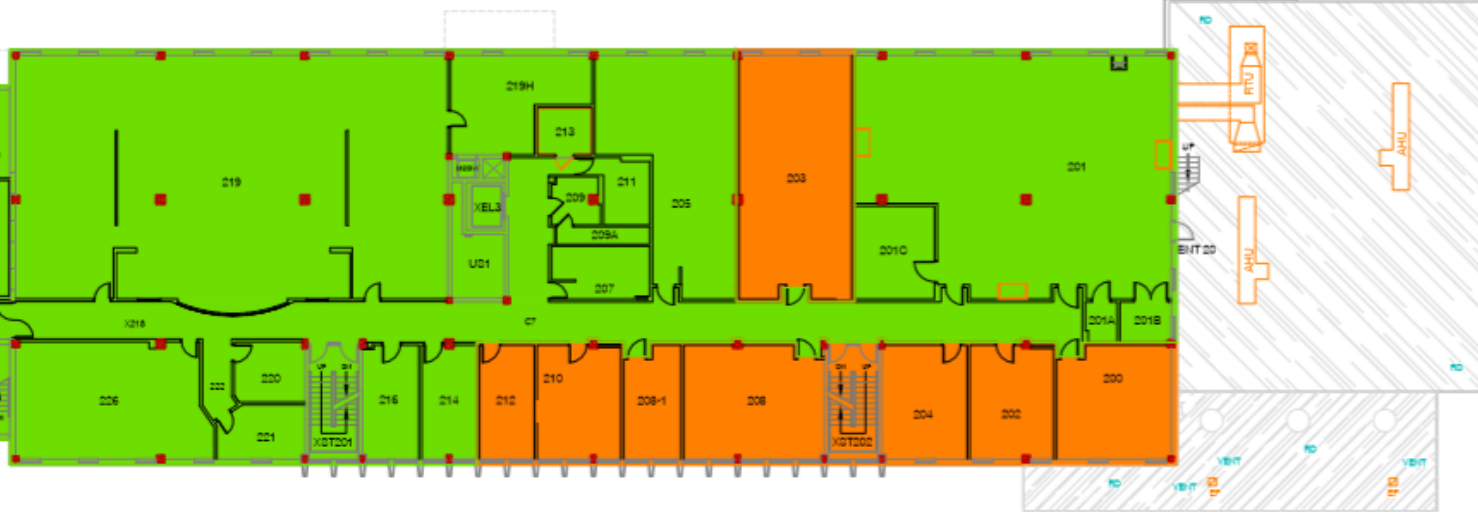


SCALE:

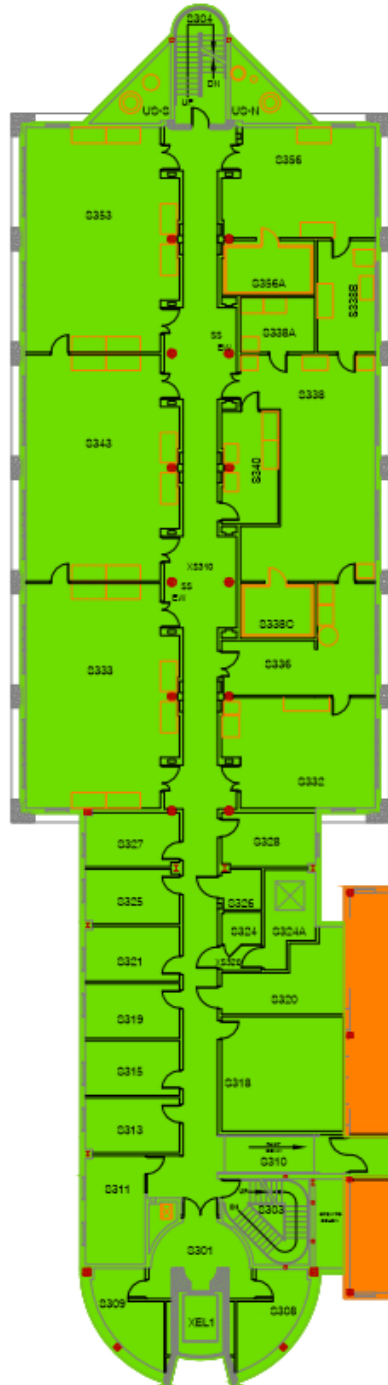


LEGEND

- AREAS WITHOUT FORCED VENTILATION = 3,437 SQUARE FEET
- AREAS WITH FORCED VENTILATION = 23,393 SQUARE FEET



HEALTH SCIENCES WING



The University of Iowa
PHARMACEUTICAL SCIENCES RESEARCH BUILDING
 THIRD FLOOR

Blg. No. 0006 12/02/2019 File: 005AR03

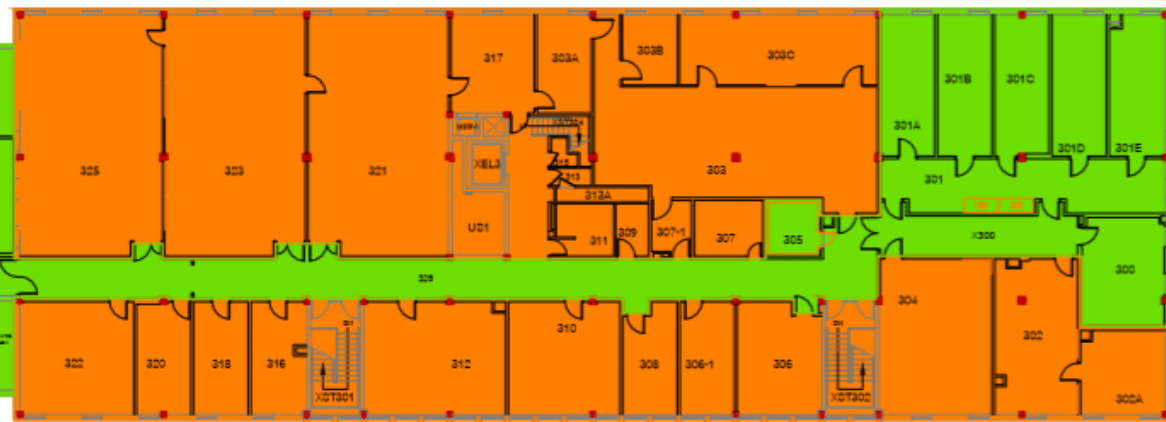


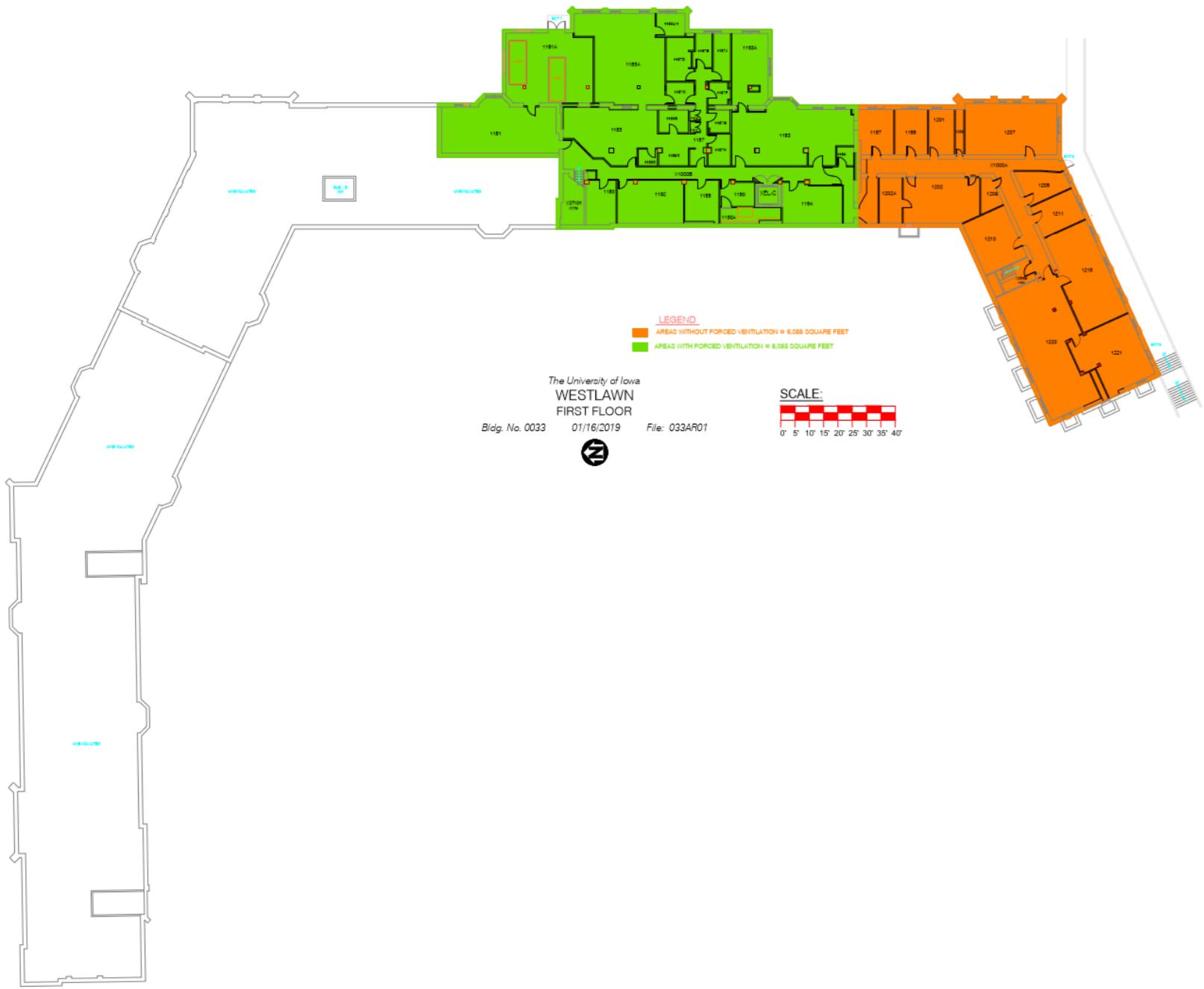
SCALE:



LEGEND

- AREAS WITHOUT FORCED VENTILATION = 10,779 SQUARE FEET
- AREAS WITH FORCED VENTILATION = 15,951 SQUARE FEET



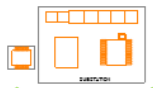


LEGEND
ORANGE: AREAS WITHOUT FORCED VENTILATION = 6,088 SQUARE FEET
GREEN: AREAS WITH FORCED VENTILATION = 8,088 SQUARE FEET

The University of Iowa
WESTLAWN
FIRST FLOOR

Bldg. No. 0033 01/16/2019 File: 0334R01






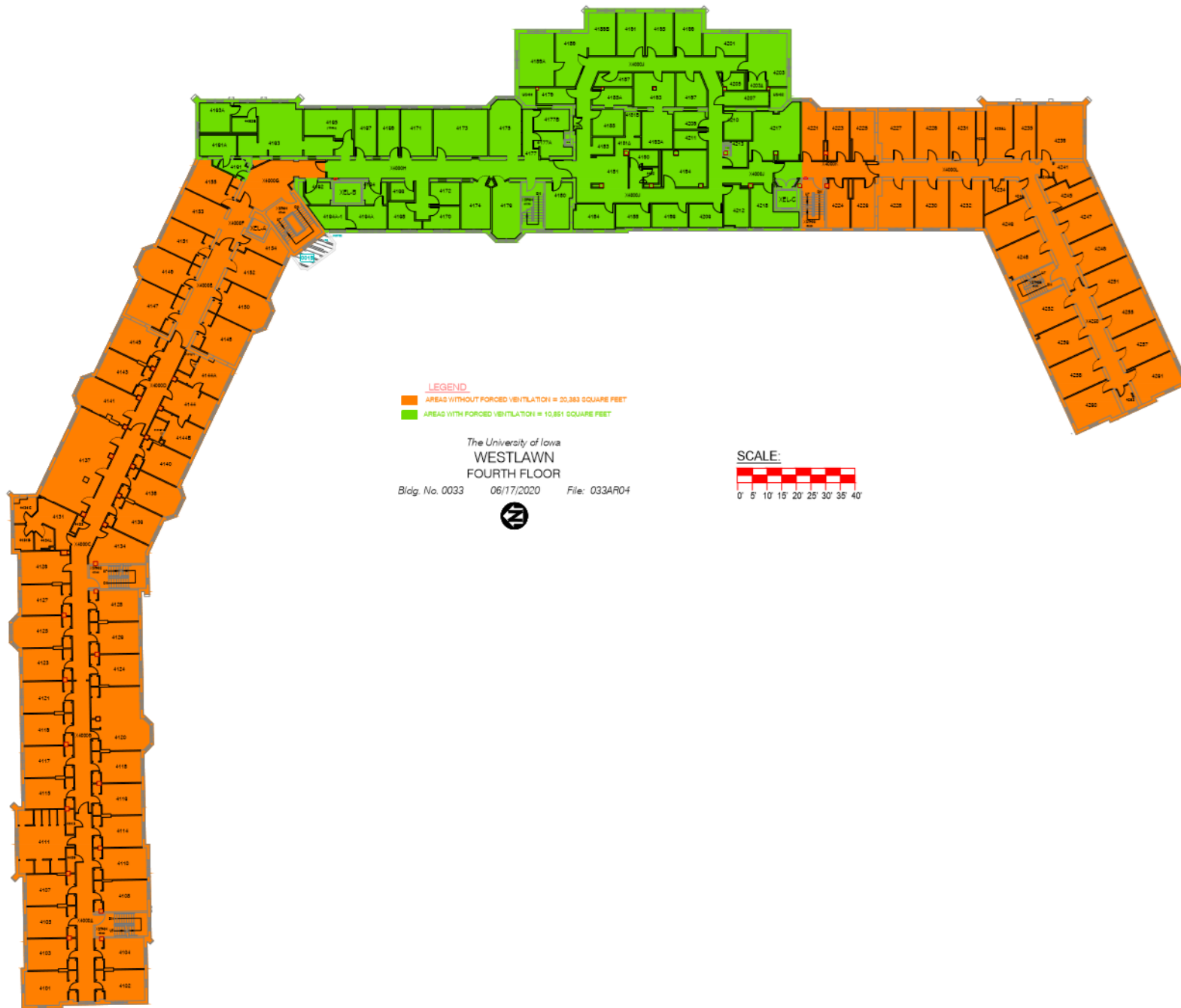
LEGEND
 ORANGE AREAS WITHOUT FORCED VENTILATION = 6,101 SQUARE FEET
 GREEN AREAS WITH FORCED VENTILATION = 25,606 SQUARE FEET

The University of Iowa
WESTLAWN
 SECOND FLOOR
 Bldg. No. 0033 01/16/2019 File: 033AR02



SCALE:

 0' 5' 10' 15' 20' 25' 30' 35' 40'



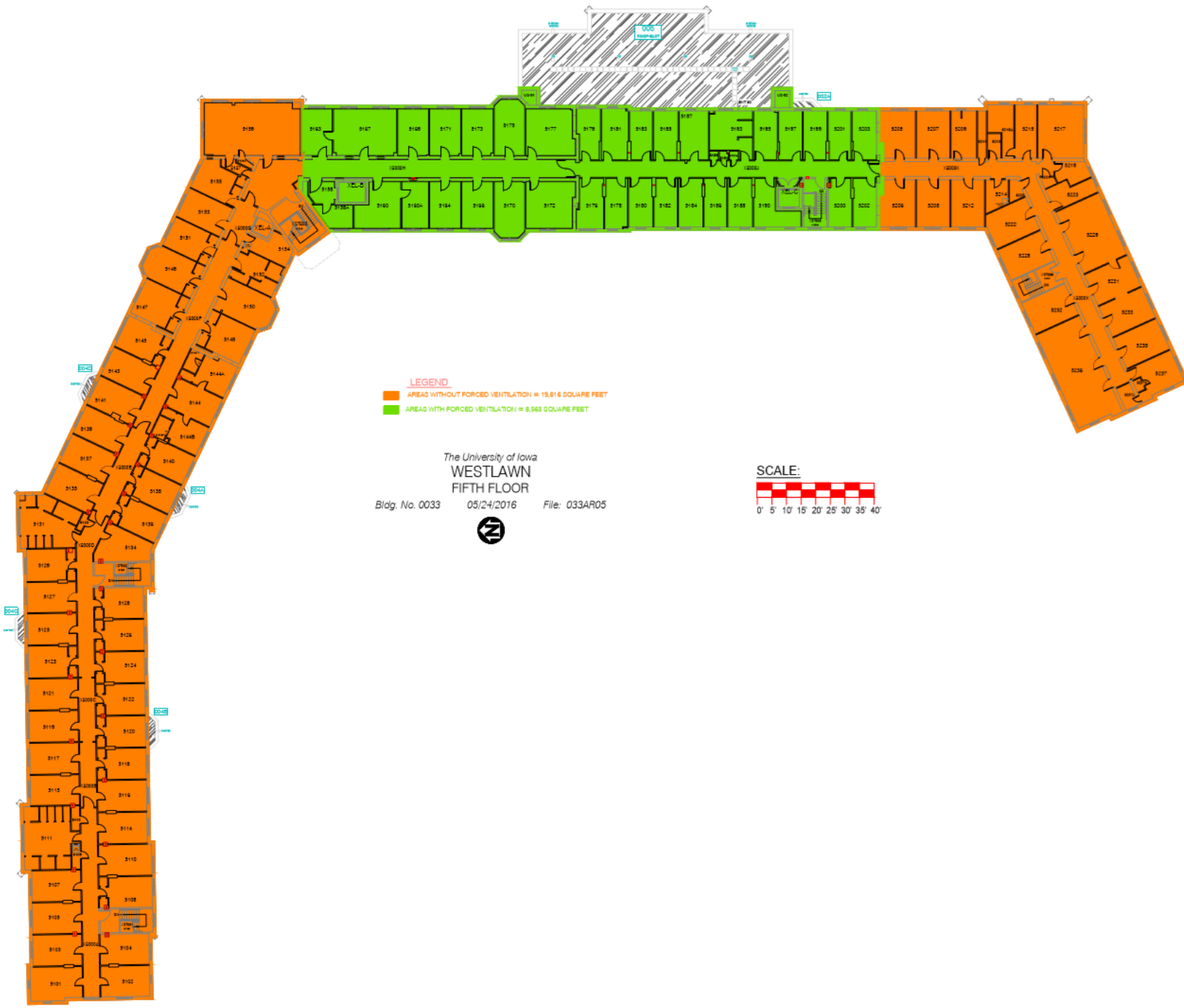


LEGEND
■ AREA WITHOUT FORCED VENTILATION = 30,383 SQUARE FEET
■ AREA WITH FORCED VENTILATION = 10,851 SQUARE FEET

The University of Iowa
WESTLAWN
FOURTH FLOOR
Bldg. No. 0033 06/17/2020 File: 033AR04

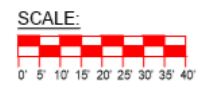


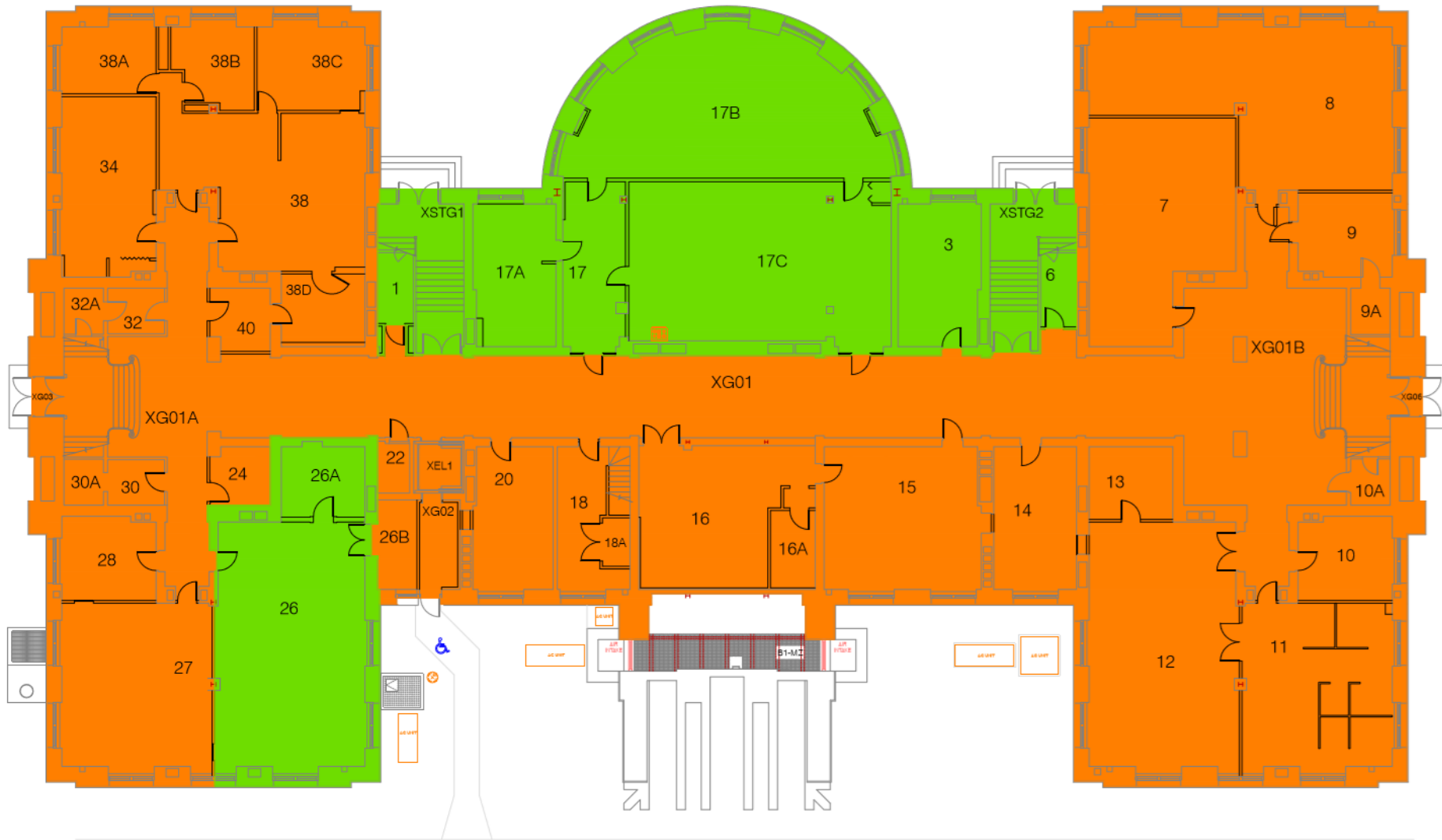
SCALE:
0' 5' 10' 15' 20' 25' 30' 35' 40'



LEGEND
 ■ AREA WITHOUT FORCED VENTILATION = 19,816 SQUARE FEET
 ■ AREA WITH FORCED VENTILATION = 8,568 SQUARE FEET

The University of Iowa
WESTLAWN
FIFTH FLOOR
 Bldg. No. 0033 05/24/2016 File: 033AR05





The University of Iowa
MACBRIDE HALL
 GROUND FLOOR

Bldg. No. 0008 04/28/2020 File: 008AR0G

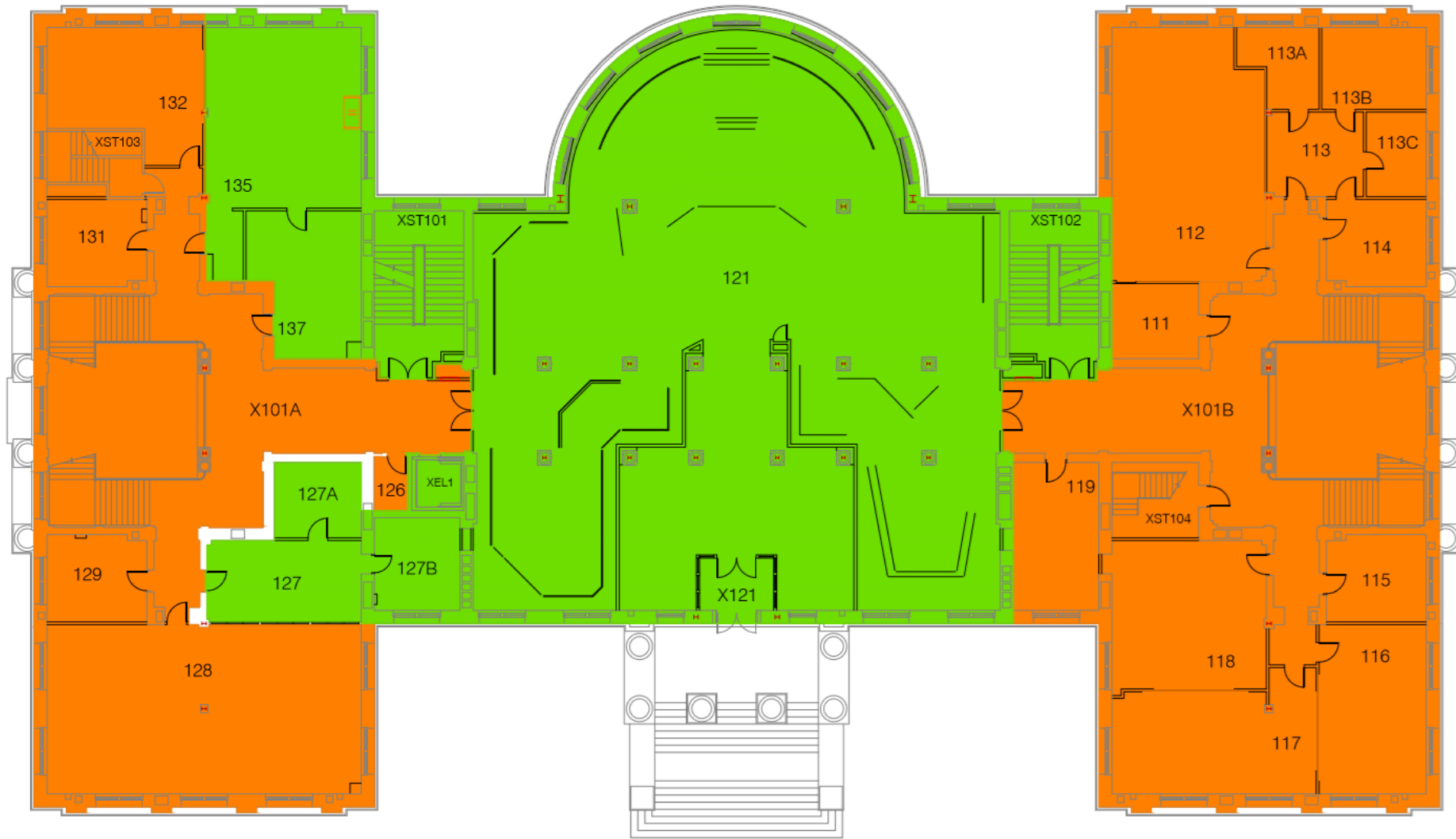


LEGEND

- AREAS WITHOUT FORCED VENTILATION = 16,203 SQUARE FEET
- AREAS WITH FORCED VENTILATION = 5,519 SQUARE FEET

SCALE:





The University of Iowa
MACBRIDE HALL
 FIRST FLOOR

Bldg. No. 0008 04/28/2020 File: 008AR01

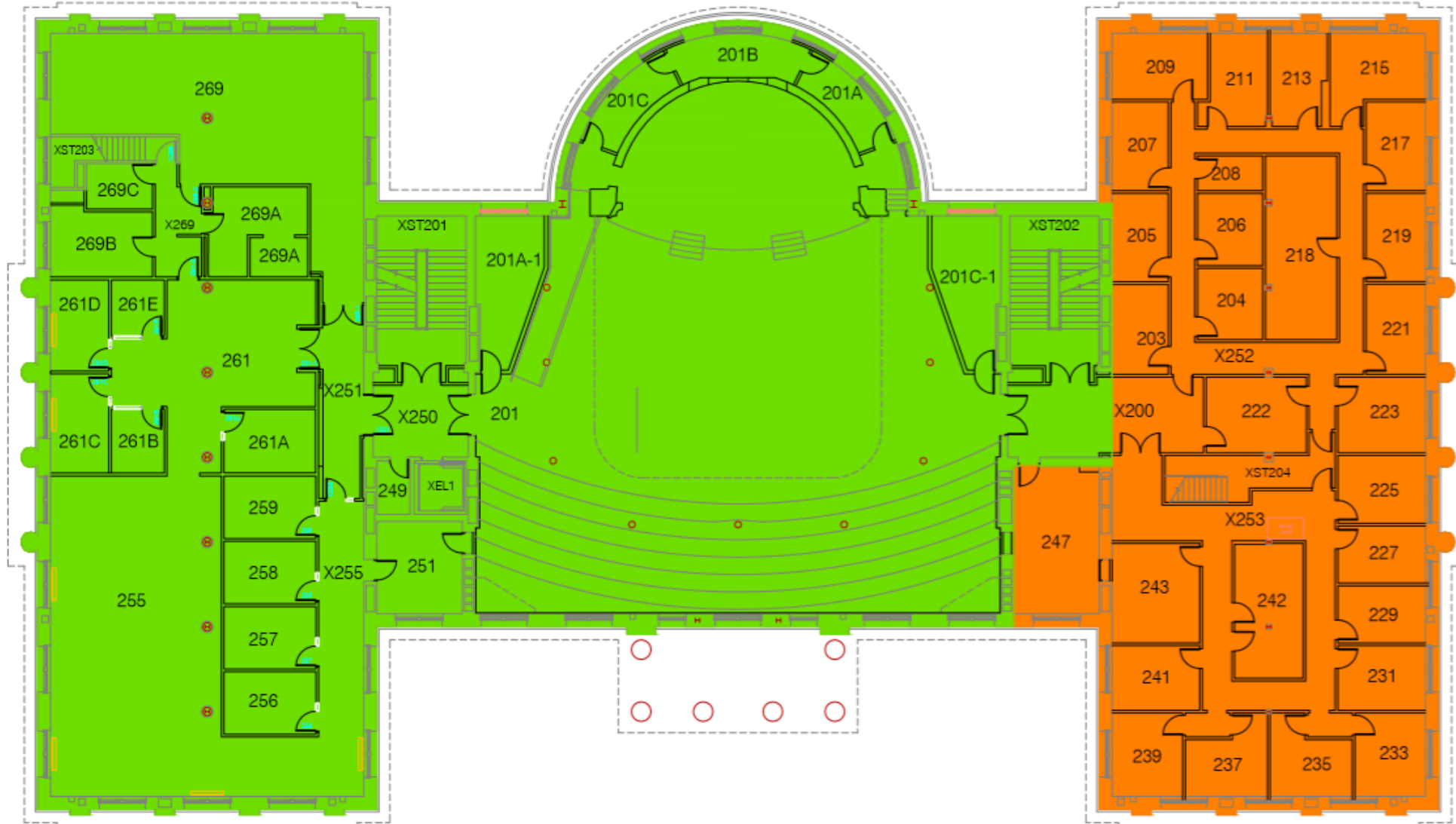


LEGEND

- AREAS WITHOUT FORCED VENTILATION = 11,476 SQUARE FEET
- AREAS WITH FORCED VENTILATION = 9,464 SQUARE FEET

SCALE:





The University of Iowa
MACBRIDE HALL
 SECOND FLOOR

Bldg. No. 0008 04/28/2020 File: 008AR02



LEGEND

- AREAS WITHOUT FORCED VENTILATION = 6,579 SQUARE FEET
- AREAS WITH FORCED VENTILATION = 14,531 SQUARE FEET

SCALE:



Please contact Julie Sychra, Facilities Management, for ventilation information on the Medical Education Building

Please contact Julie Sychra, Facilities Management, for ventilation information on the Medical Research Center



LEGEND

- AREAS WITHOUT FORCED VENTILATION = 486 SQUARE FEET
- AREAS WITH FORCED VENTILATION = 17,293 SQUARE FEET

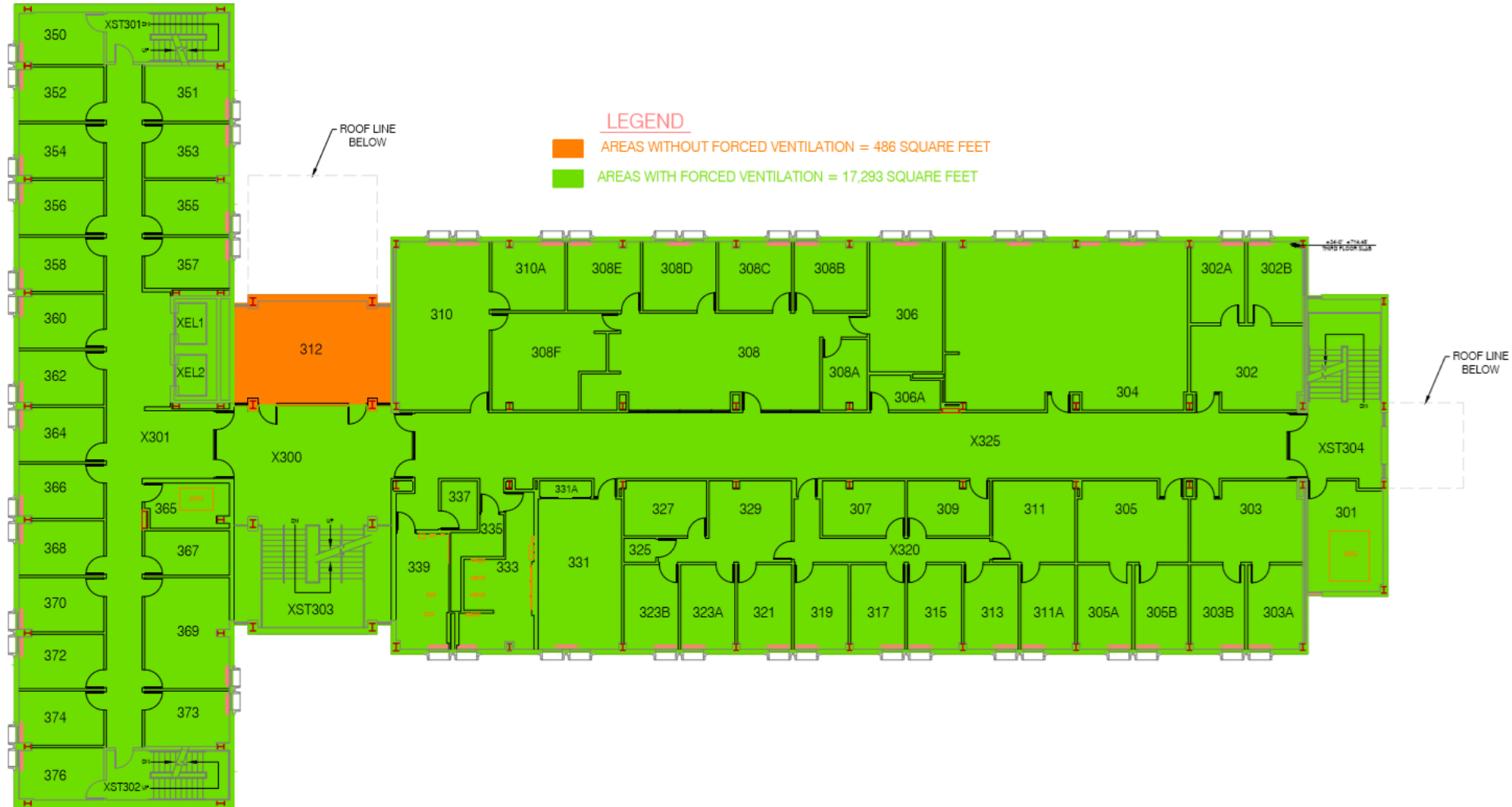
The University of Iowa
ENGLISH-PHILOSOPHY BUILDING
 LEVEL 2

Bldg. No. 0196 04/26/2020 File: 196AR02



SCALE:





LEGEND

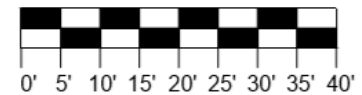
■ AREAS WITHOUT FORCED VENTILATION = 486 SQUARE FEET
■ AREAS WITH FORCED VENTILATION = 17,293 SQUARE FEET

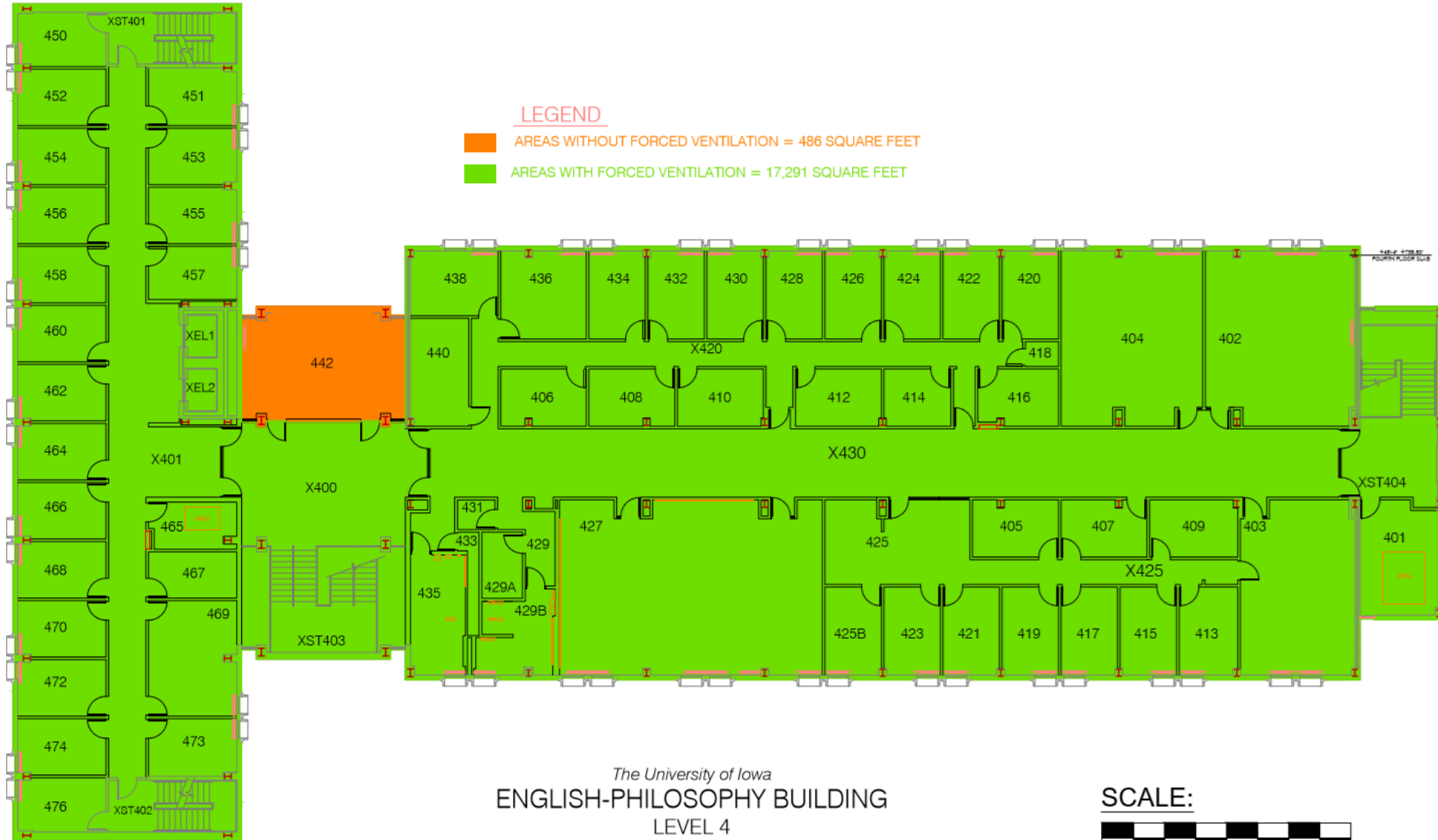
The University of Iowa
ENGLISH-PHILOSOPHY BUILDING
 LEVEL 3

Bldg. No. 0196 04/26/2020 File: 196AR03



SCALE:





LEGEND

- AREAS WITHOUT FORCED VENTILATION = 486 SQUARE FEET
- AREAS WITH FORCED VENTILATION = 17,291 SQUARE FEET

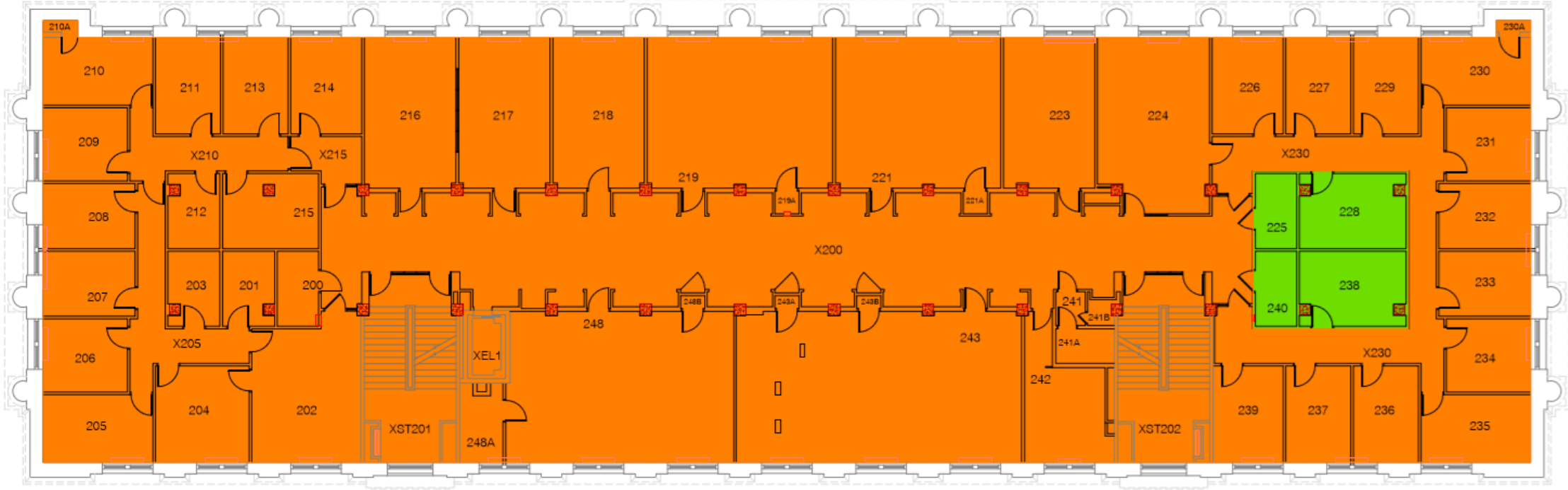
The University of Iowa
ENGLISH-PHILOSOPHY BUILDING
 LEVEL 4

Bldg. No. 0196 04/26/2020 File: 196AR04



SCALE:





The University of Iowa
JESSUP HALL
 SECOND FLOOR PLAN
 Bldg. No. 0004 04/27/2020 File: 004AR02

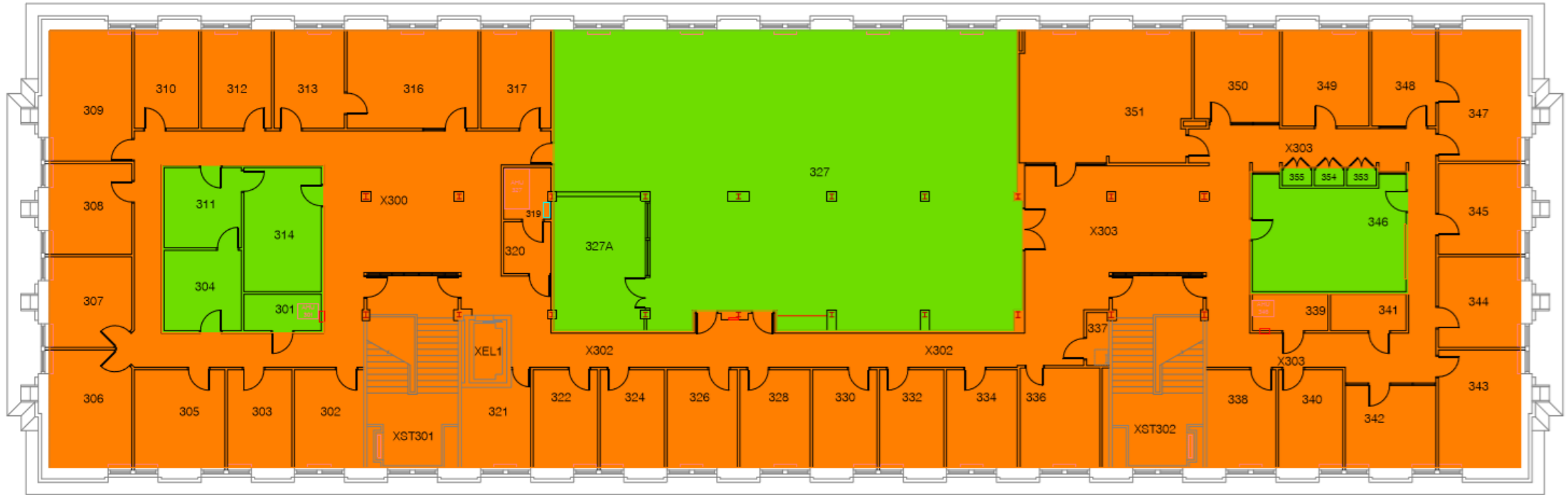


LEGEND

■ AREAS WITHOUT FORCED VENTILATION = 13,334 SQUARE FEET

■ AREAS WITH FORCED VENTILATION = 518 SQUARE FEET





The University of Iowa
JESSUP HALL
THIRD FLOOR PLAN
 Bldg. No. 0004 04/27/2020 File: 004AR03

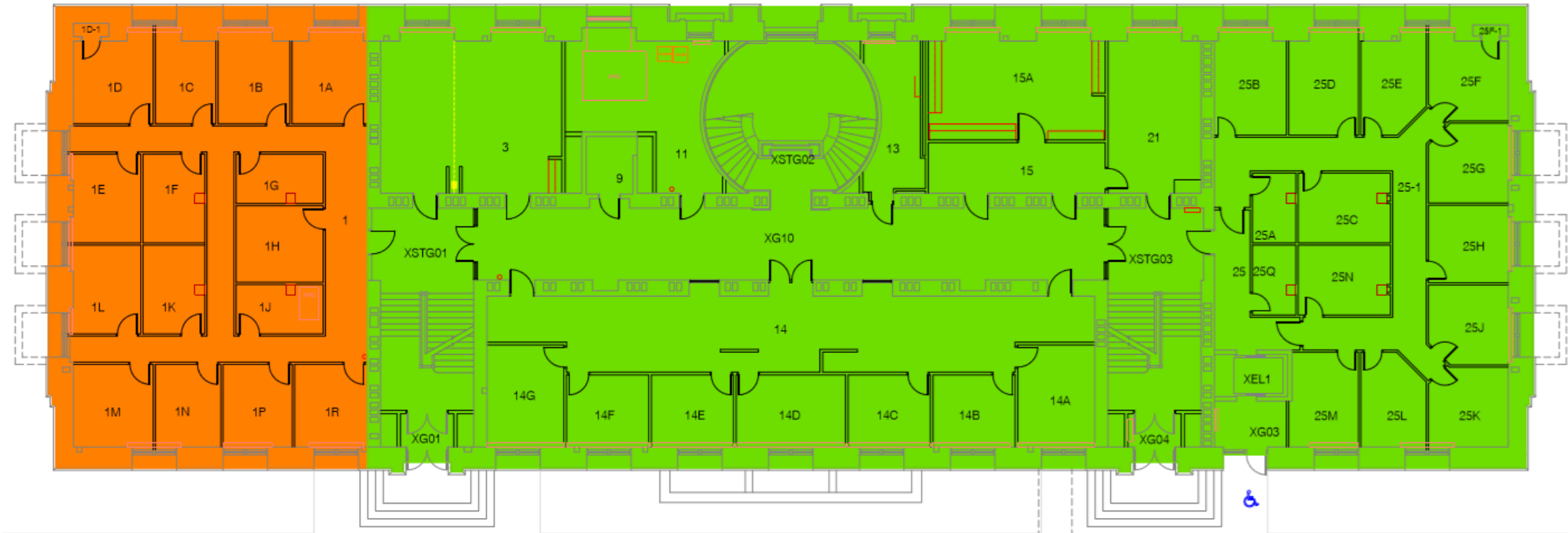


LEGEND

- AREAS WITHOUT FORCED VENTILATION = 10,867 SQUARE FEET
- AREAS WITH FORCED VENTILATION = 1,016 SQUARE FEET

SCALE:





The University of Iowa
MACLEAN HALL
 GROUND FLOOR

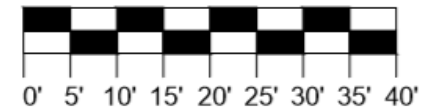
Bldg. No. 0023 12/09/2016 File: 023AR0G

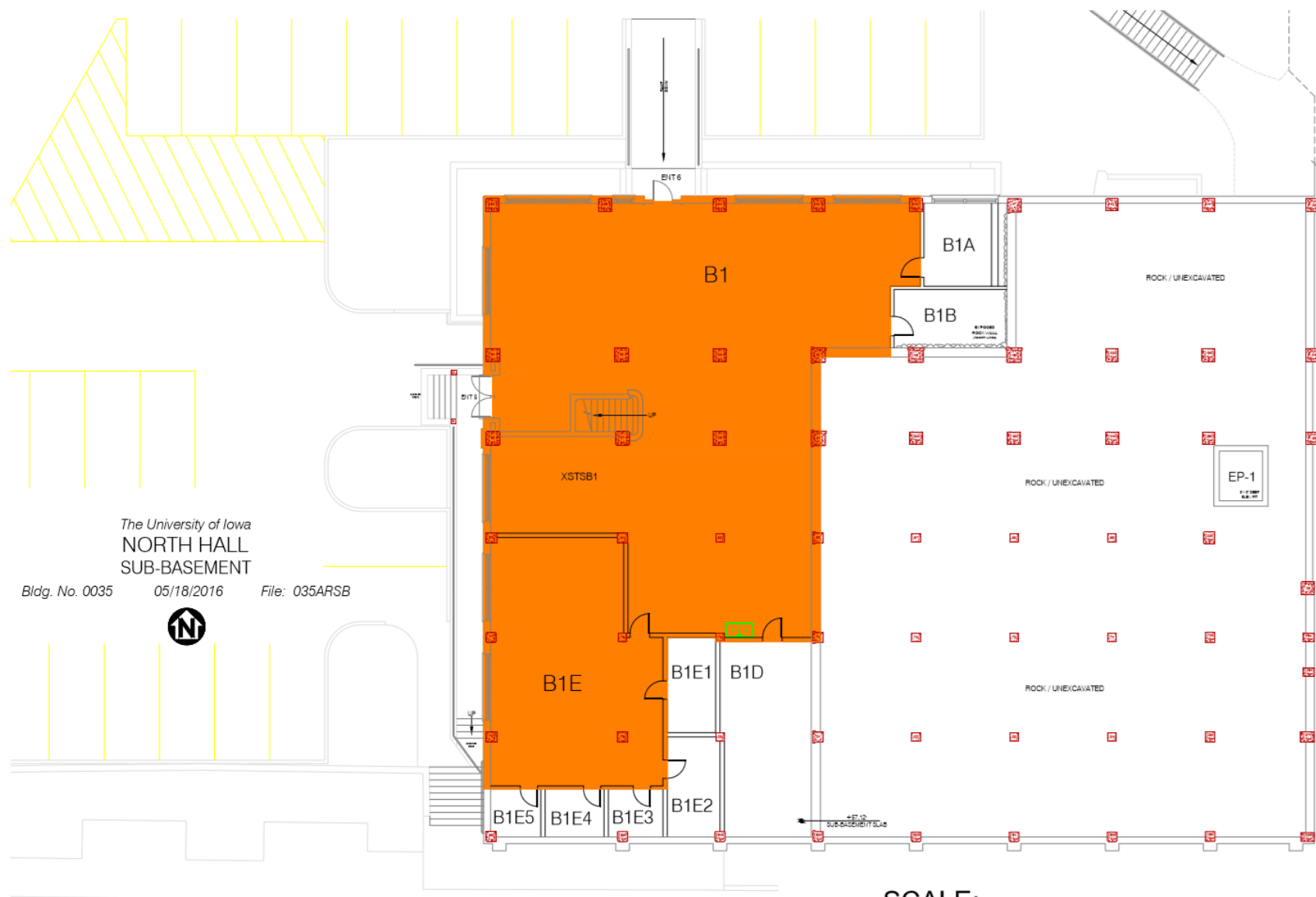


LEGEND

- AREAS WITHOUT FORCED VENTILATION = 3,298 SQUARE FEET
- AREAS WITH FORCED VENTILATION = 12,104 SQUARE FEET

SCALE:



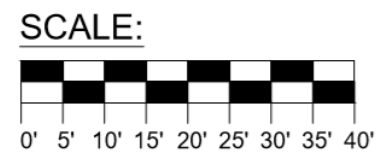


The University of Iowa
 NORTH HALL
 SUB-BASEMENT

Bldg. No. 0035 05/18/2016 File: 035ARSB



- LEGEND**
- AREAS WITHOUT FORCED VENTILATION = 4,525 SQUARE FEET
 - AREAS WITH FORCED VENTILATION = 0 SQUARE FEET



The University of Iowa
NORTH HALL
BASEMENT

Bldg. No. 0035 05/18/2016 File: 035AR0B



SCALE:



LEGEND

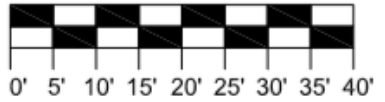
- AREAS WITHOUT FORCED VENTILATION = 12,807 SQUARE FEET
- AREAS WITH FORCED VENTILATION = 0 SQUARE FEET

The University of Iowa
NORTH HALL
FIRST FLOOR


Bldg. No. 0035 04/29/2020 File: 035AR01



SCALE:



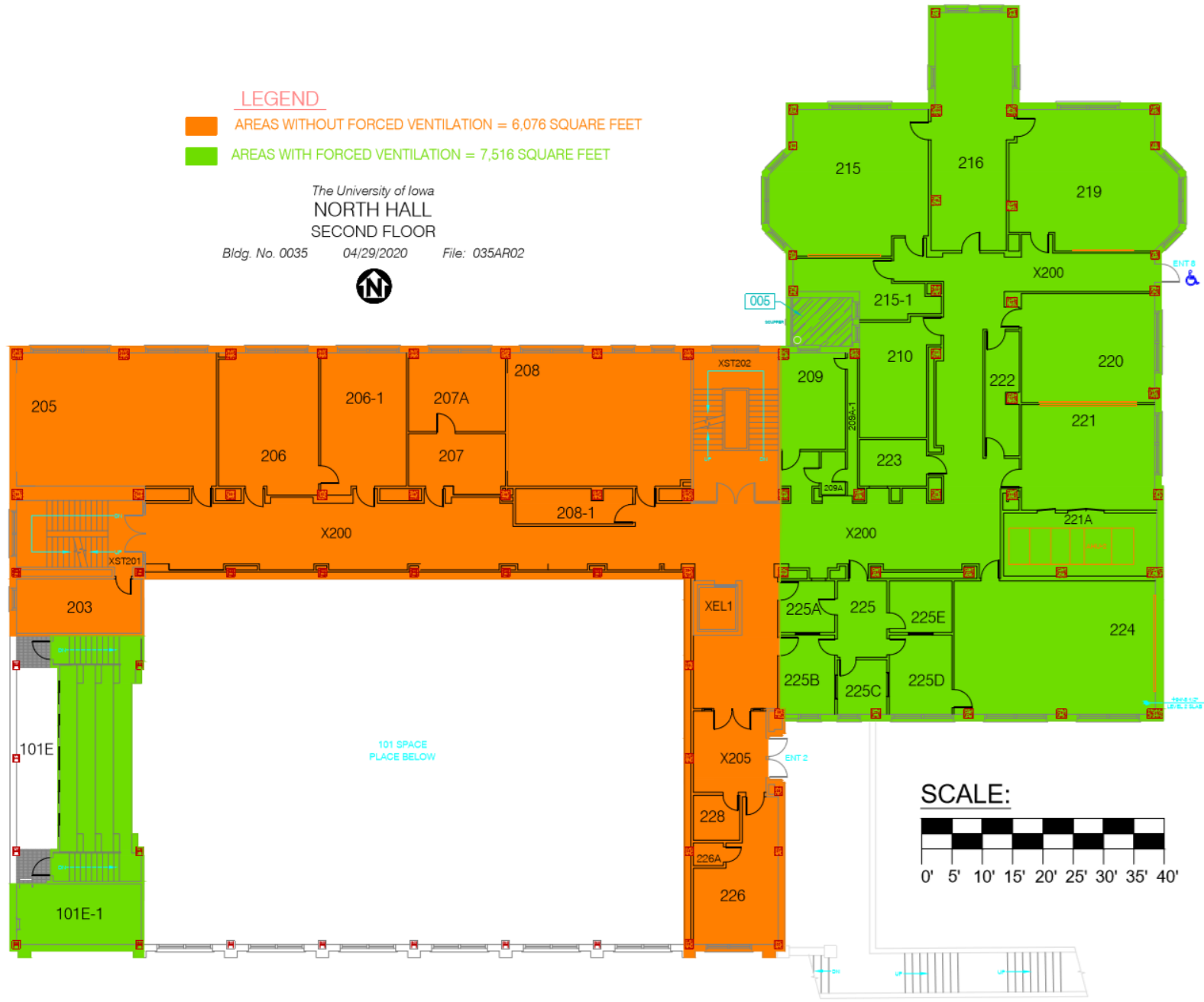
LEGEND

-  AREAS WITHOUT FORCED VENTILATION = 8,422 SQUARE FEET
-  AREAS WITH FORCED VENTILATION = 6,964 SQUARE FEET

LEGEND

- AREAS WITHOUT FORCED VENTILATION = 6,076 SQUARE FEET
- AREAS WITH FORCED VENTILATION = 7,516 SQUARE FEET

The University of Iowa
NORTH HALL
SECOND FLOOR
Bldg. No. 0035 04/29/2020 File: 035AR02



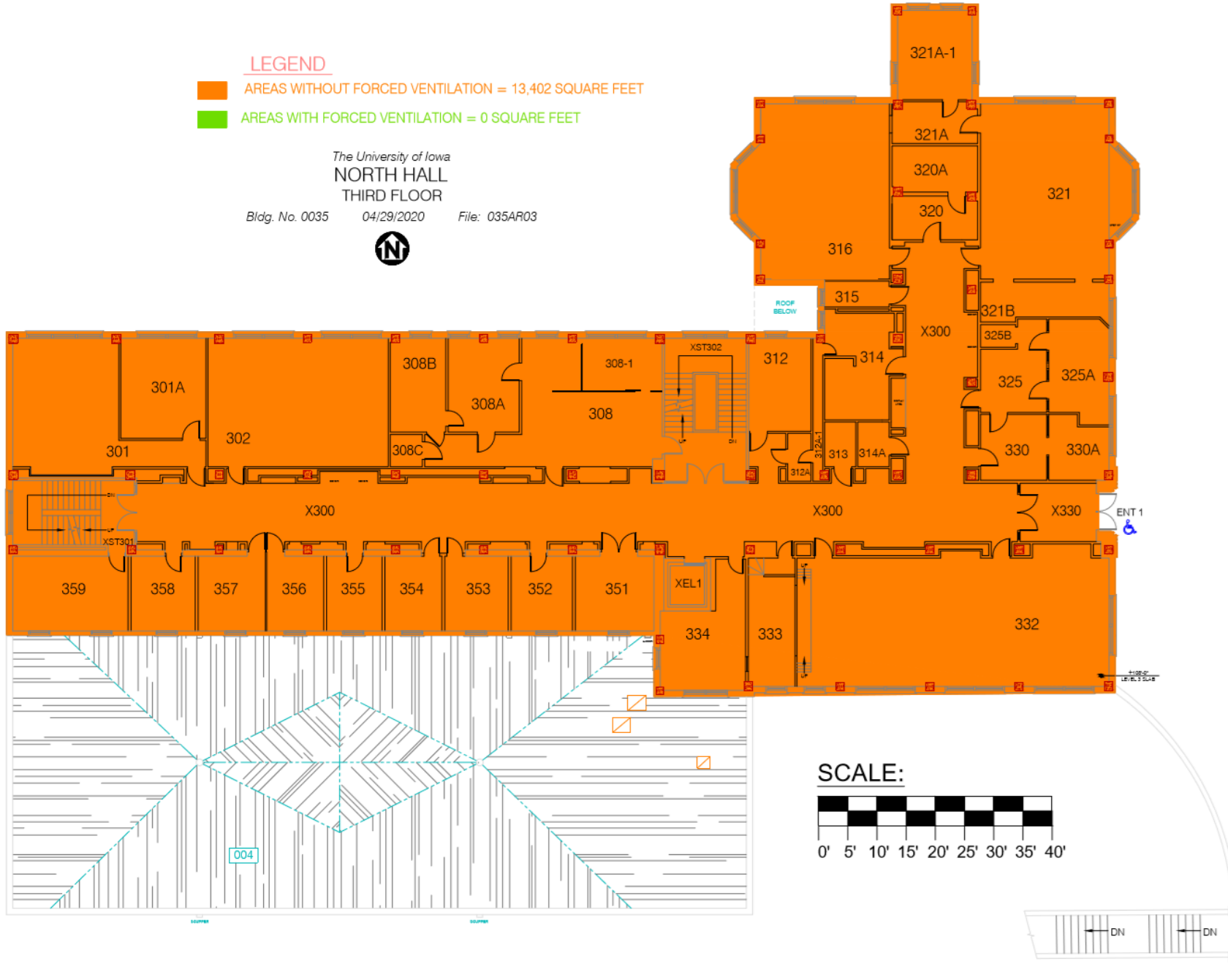
LEGEND

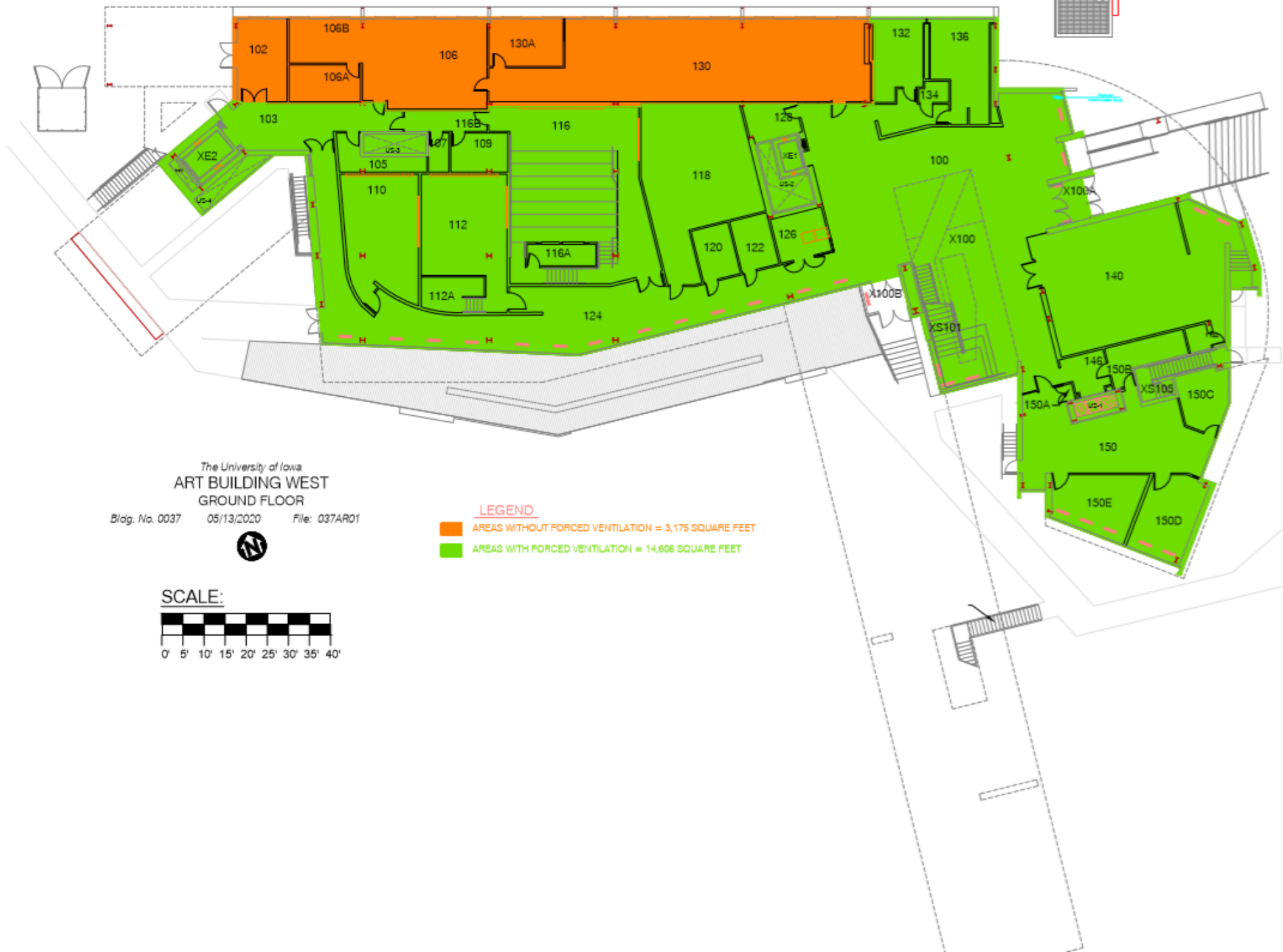
AREAS WITHOUT FORCED VENTILATION = 13,402 SQUARE FEET

AREAS WITH FORCED VENTILATION = 0 SQUARE FEET

The University of Iowa
NORTH HALL
THIRD FLOOR

Bldg. No. 0035 04/29/2020 File: 035AR03





The University of Iowa
ART BUILDING WEST
GROUND FLOOR

Bldg. No. 0037 05/13/2020 File: 037AR01



SCALE:



LEGEND

- AREAS WITHOUT FORCED VENTILATION = 3,175 SQUARE FEET
- AREAS WITH FORCED VENTILATION = 14,606 SQUARE FEET



The University of Iowa
HALSEY HALL
 BASEMENT LEVEL
 Bldg. No. 0015 08/06/2020 File: 015AR0B

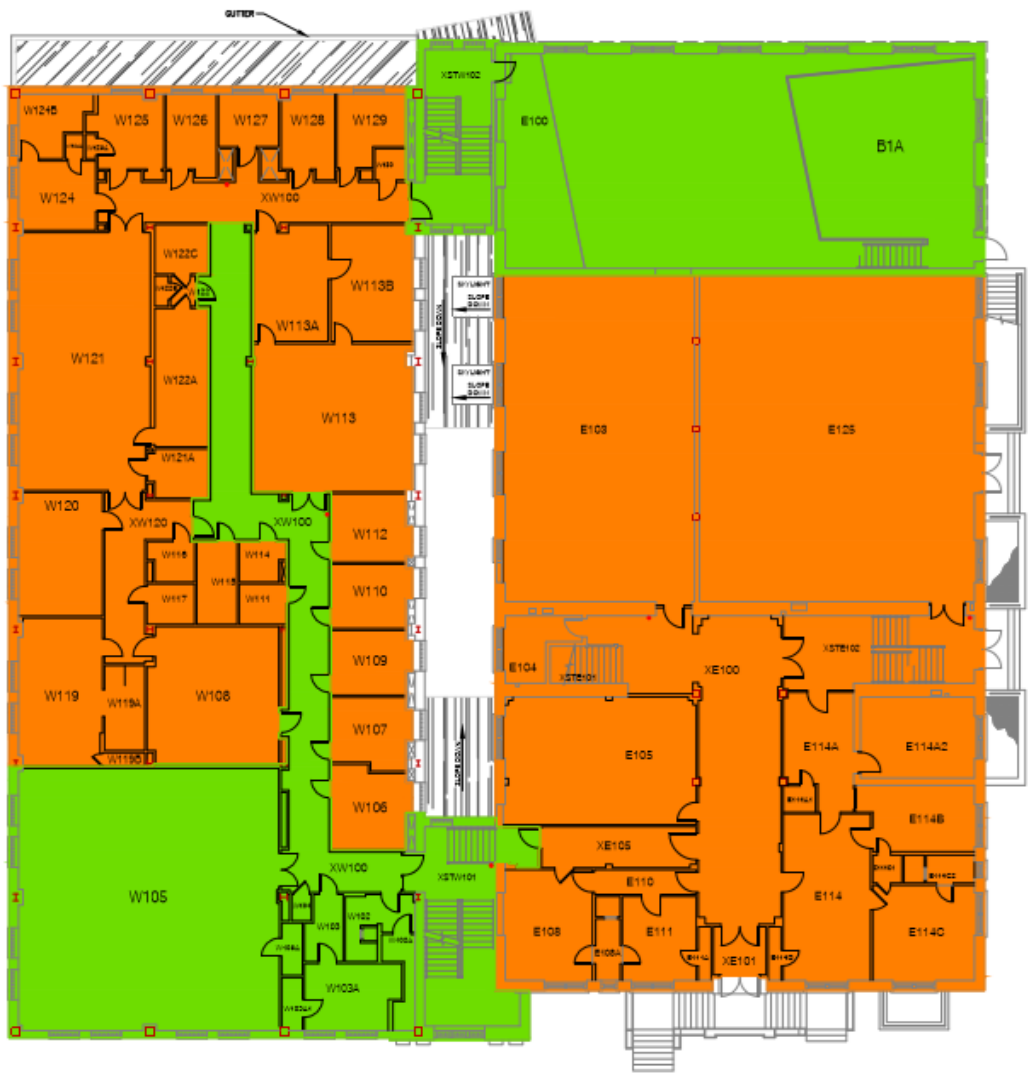


LEGEND

- AREAS WITHOUT FORCED VENTILATION = 9,122 SQUARE FEET
- AREAS WITH FORCED VENTILATION = 14,691 SQUARE FEET

SCALE:



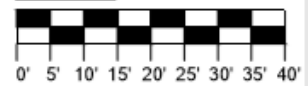


The University of Iowa
HALSEY HALL
 FIRST FLOOR

Bldg. No. 0015 06/25/2020 File: 015AR01

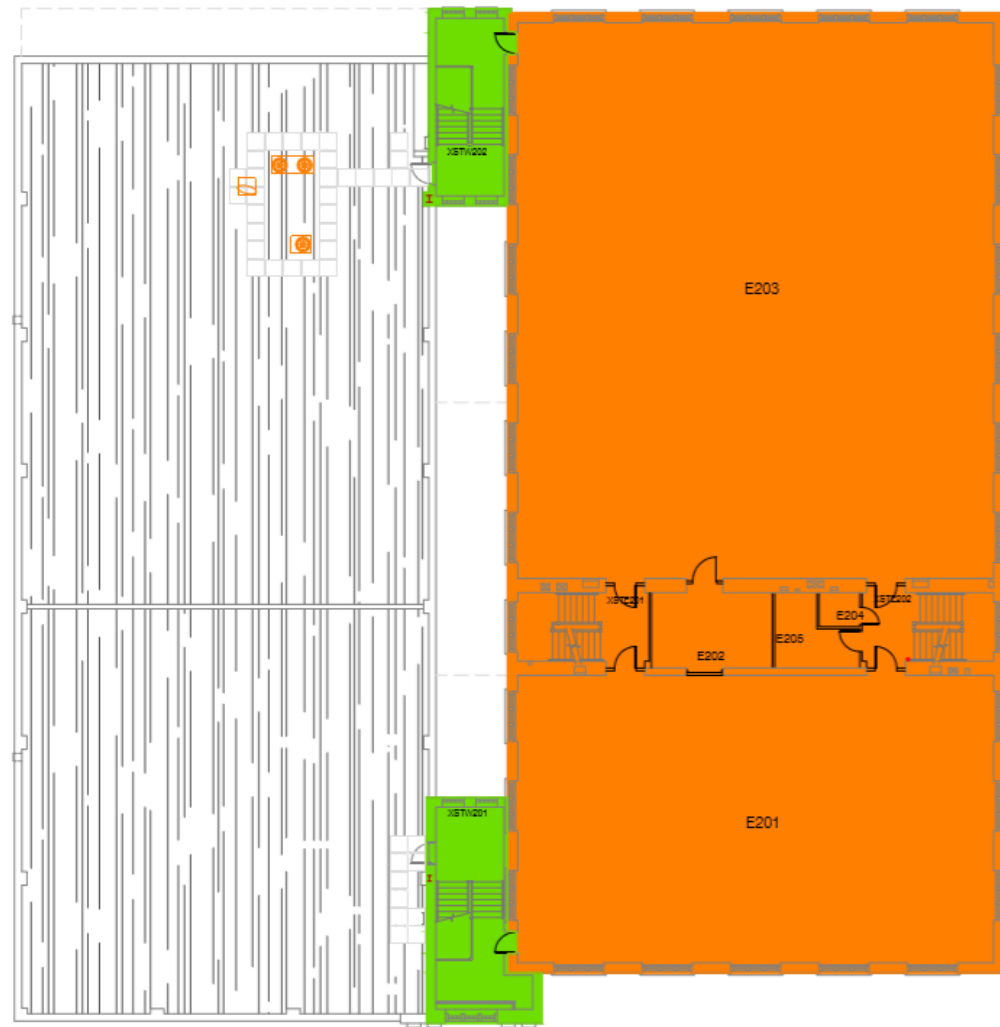


SCALE:



LEGEND

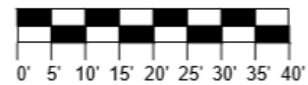
- AREAS WITHOUT FORCED VENTILATION = 13,377 SQUARE FEET
- AREAS WITH FORCED VENTILATION = 6,342 SQUARE FEET



The University of Iowa
HALSEY HALL
 SECOND FLOOR PLAN
 Bldg. No. 0015 File: 015AR02

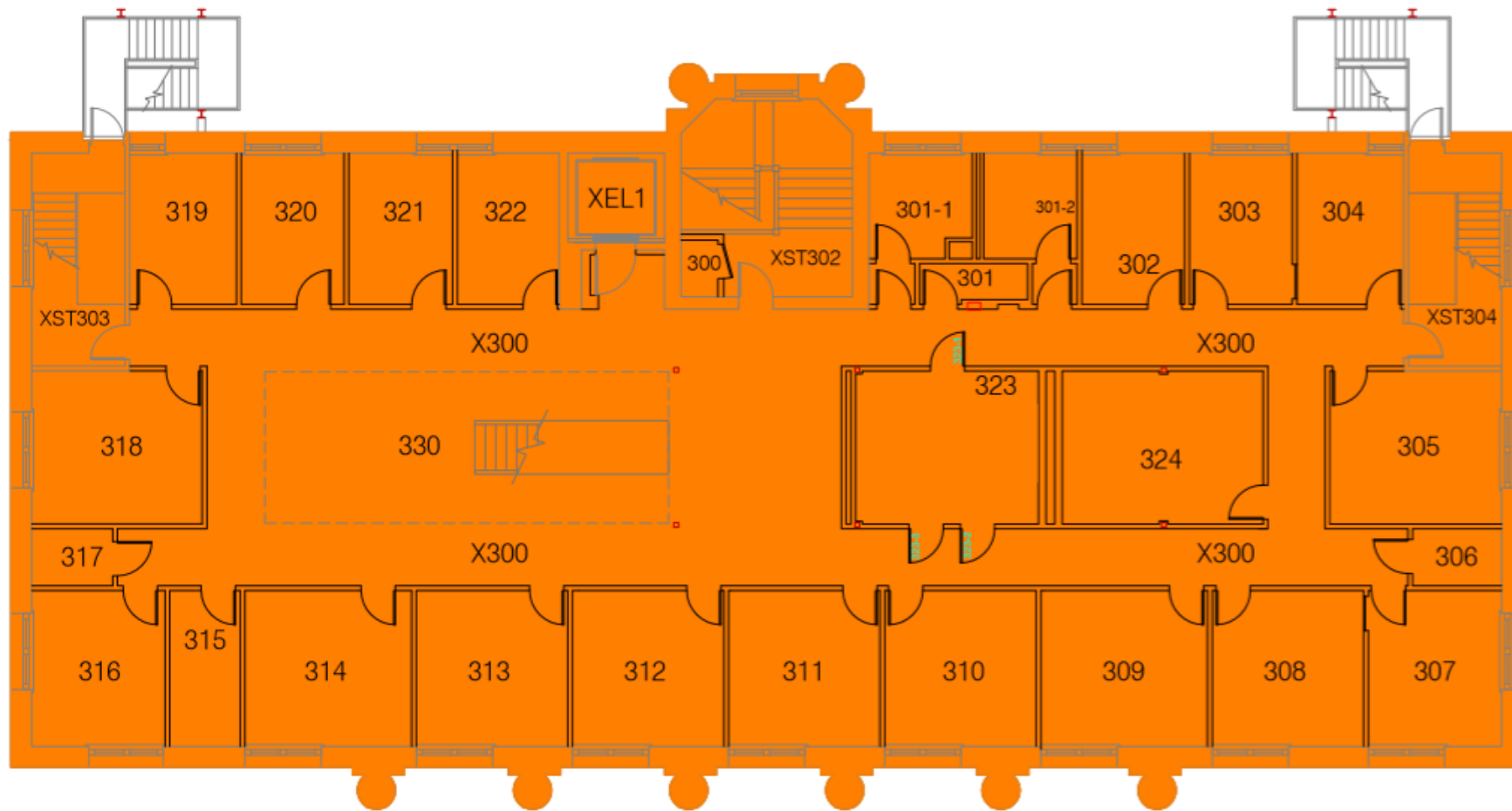


SCALE:



LEGEND

- AREAS WITHOUT FORCED VENTILATION = 10,309 SQUARE FEET
- AREAS WITH FORCED VENTILATION = 778 SQUARE FEET



The University of Iowa
 GILMORE HALL
 THIRD FLOOR

Bldg. No. 0038 05/20/2020 File: 038AR03

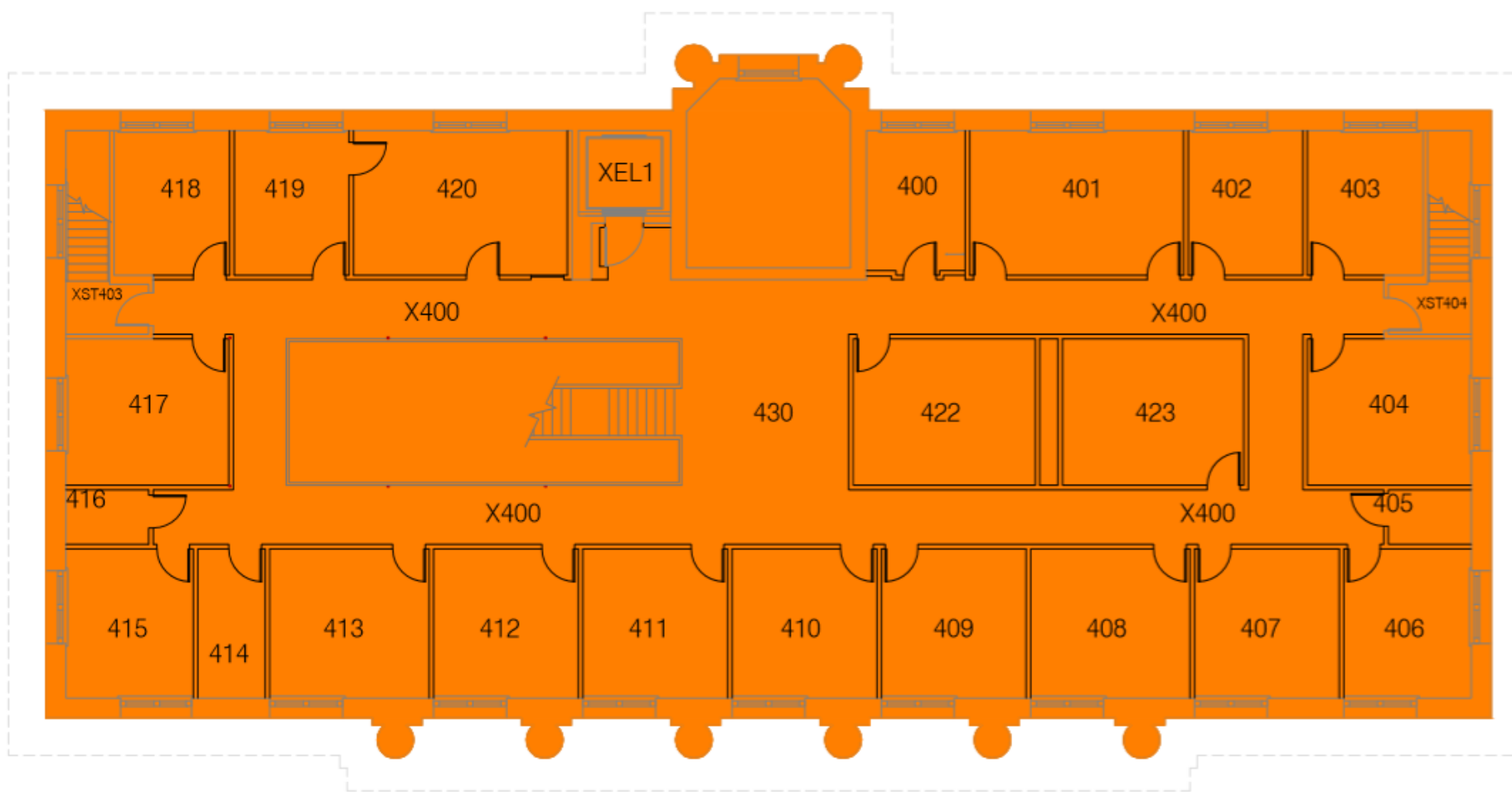


SCALE:



LEGEND

- AREAS WITHOUT FORCED VENTILATION = 7,517 SQUARE FEET
- AREAS WITH FORCED VENTILATION = 0 SQUARE FEET



The University of Iowa
GILMORE HALL
 FOURTH FLOOR

Bldg. No. 0038 11/16/2016 File: 038AR04



SCALE:



LEGEND

- AREAS WITHOUT FORCED VENTILATION = 7,522 SQUARE FEET
- AREAS WITH FORCED VENTILATION = 0 SQUARE FEET

LEGEND

- AREAS WITHOUT FORCED VENTILATION = 3,720 SQUARE FEET
- AREAS WITH FORCED VENTILATION = 0 SQUARE FEET



*Please note that this floor plan is applicable to all spaces...there are no spaces in Jefferson Building that have forced ventilation

The University of Iowa
JEFFERSON BUILDING
EIGHTH FLOOR PLAN

Bldg. No. 0300

File: 300AR08

09/07/2016



SCALE:





The University of Iowa
 CALVIN HALL
 GROUND FLOOR
 Blg. No. 0007 12/26/2018 File: 007ARGR



- LEGEND**
- AREAS WITHOUT FORCED VENTILATION = 3,906 SQUARE FEET
 - AREAS WITH FORCED VENTILATION = 5,849 SQUARE FEET

Please contact Julie Sychra, Facilities Management, for ventilation information on the South Quadrangle

LEGEND

- AREAS WITHOUT FORCED VENTILATION = 2,365 SQUARE FEET
- AREAS WITH FORCED VENTILATION = 4,507 SQUARE FEET

The University of Iowa
DEY HOUSE
FIRST FLOOR

Bldg. No. 0134

File: 134AR01

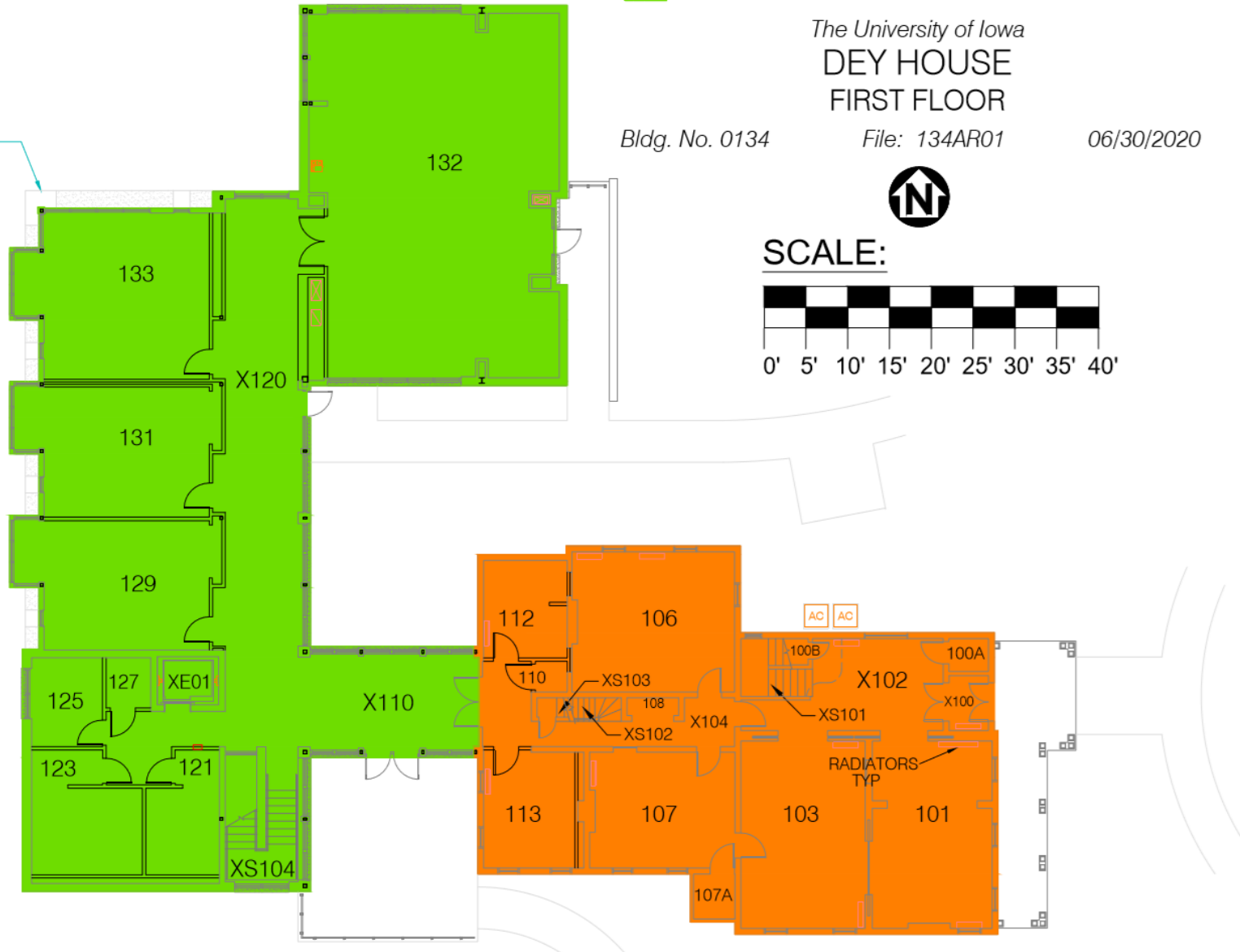
06/30/2020

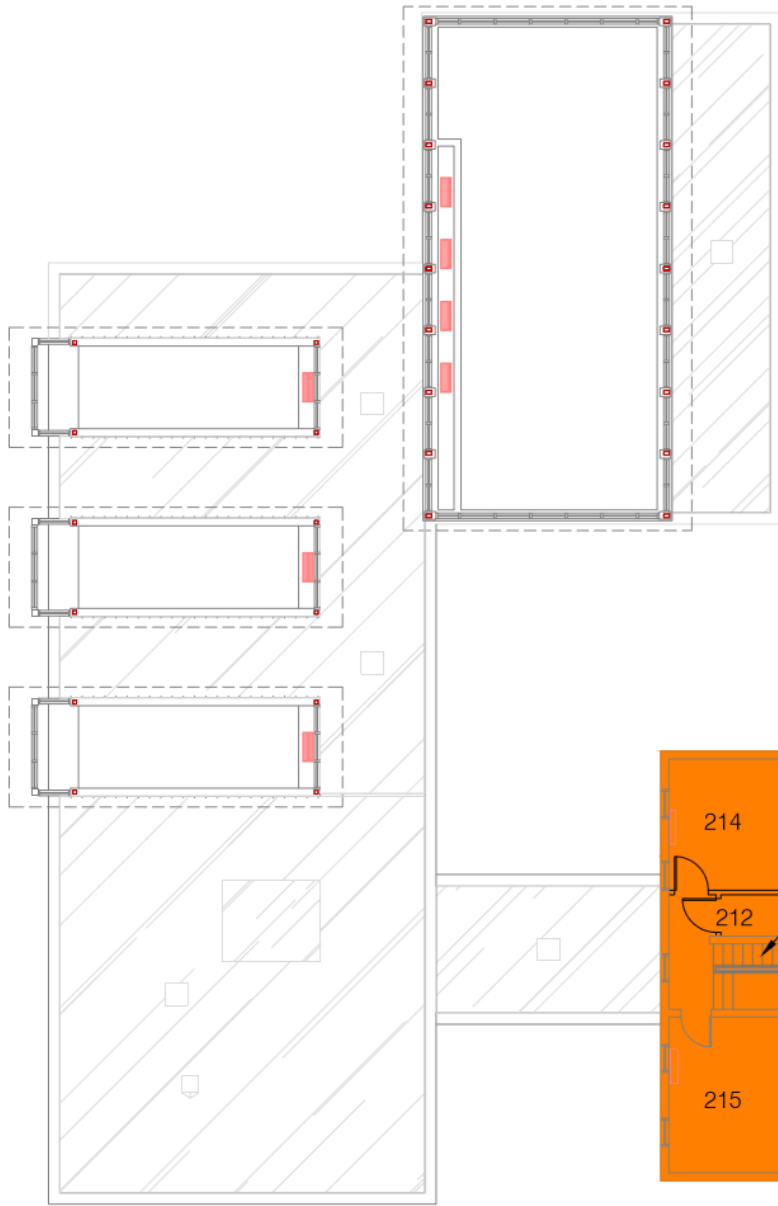


SCALE:



ROOF LINE
ABOVE





LEGEND

- AREAS WITHOUT FORCED VENTILATION = 2,332 SQUARE FEET
- AREAS WITH FORCED VENTILATION = 0 SQUARE FEET

The University of Iowa
DEY HOUSE
SECOND FLOOR

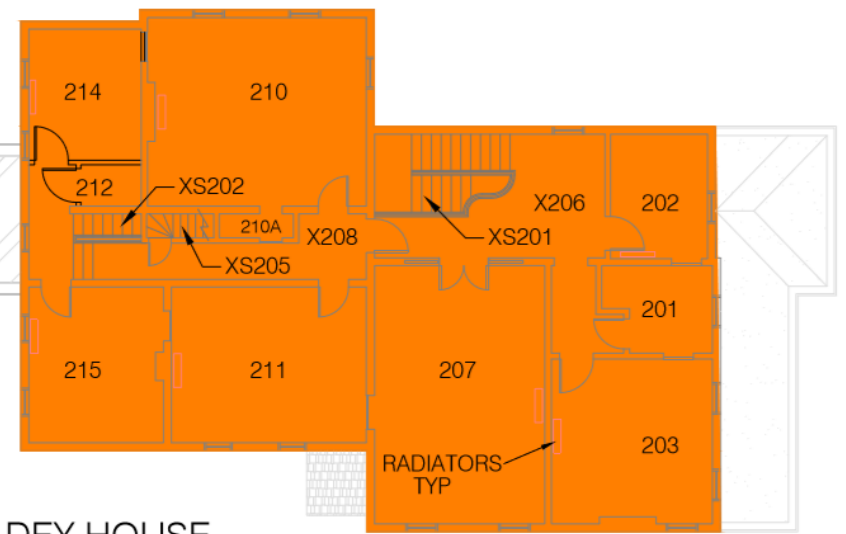
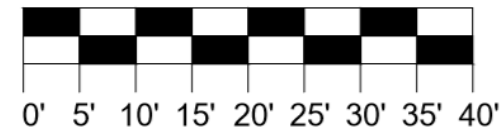
Bldg. No. 0134

File: 134AR02

06/30/2020



SCALE:



DEY HOUSE
134

LEGEND

- AREAS WITHOUT FORCED VENTILATION = 1,928 SQUARE FEET
- AREAS WITH FORCED VENTILATION = 0 SQUARE FEET

The University of Iowa
DEY HOUSE
THIRD FLOOR

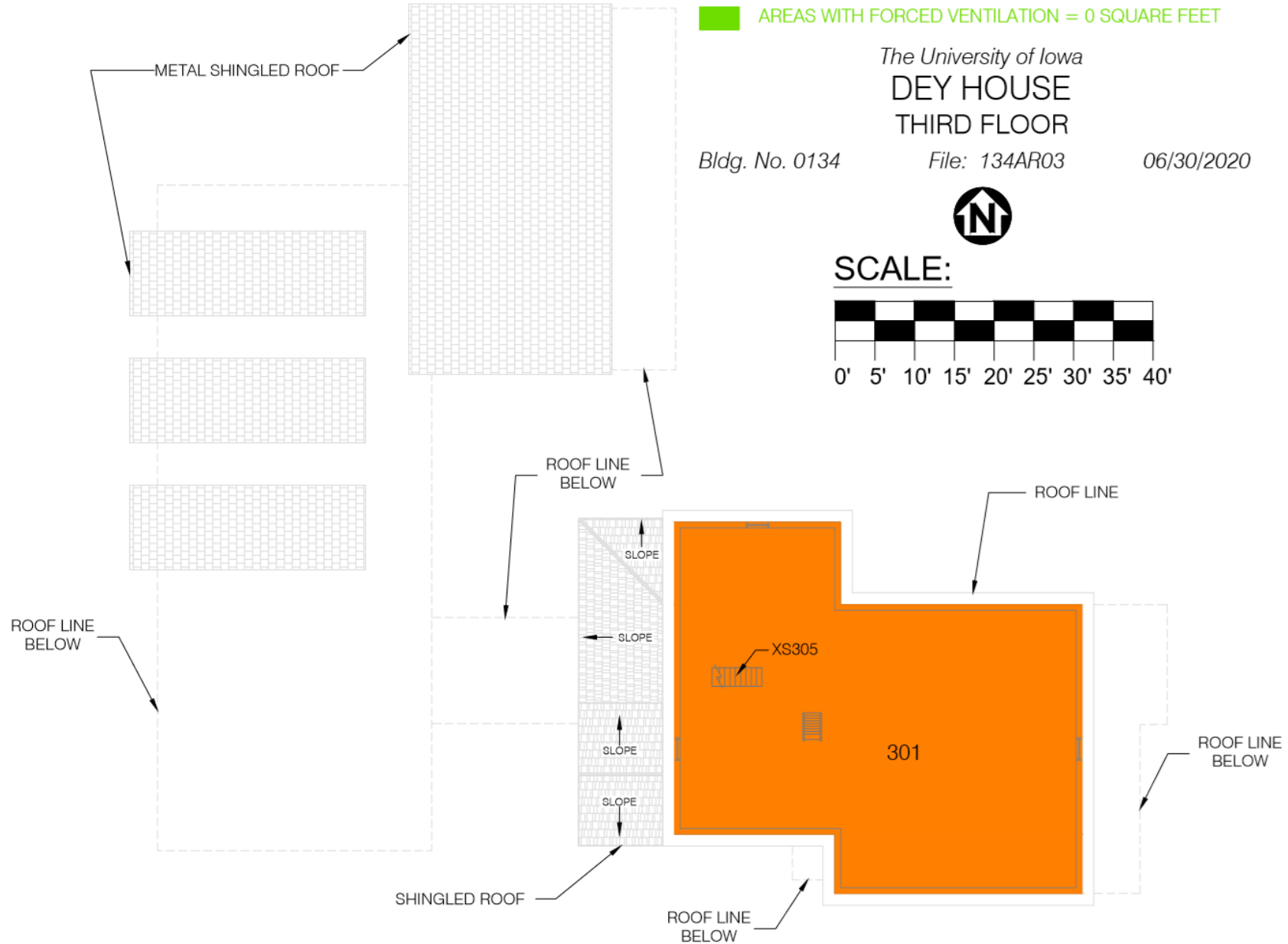
Bldg. No. 0134

File: 134AR03

06/30/2020



SCALE:



Classrooms without Forced Ventilation:

De-Prioritize these spaces for instructional purposes in accordance with guiding principles
(List represents 8% of total classrooms assessed)

BUILDING NAME	CLASSROOM		
Art Building West	ABW130		
Dey House	DH 106		
Dey House	DH 210		
English Philosophy Building	EPB 218		
English Philosophy Building	EPB 312		
English Philosophy Building	EPB 442		
Field House	FH 302	Macbride Hall	MH 112
Field House	FH 322	Macbride Hall	MH 113B
Field House	FH 332	Macbride Hall	MH 119
Field House	FH 354	Macbride Hall	MH 116
Field House	FH 402	Macbride Hall	MH 118
Field House	FH 418	Macbride Hall	MH 132
Field House	FH 424	Macbride Hall	MH 27
Field House	FH E101A	Medical Research Center	MRC 149
Field House	FH E220	North Hall	NH 101
Halsey Hall	HH E103	North Hall	NH 13
Halsey Hall	HH E105	North Hall	NH 15
Halsey Hall	HH E125	North Hall	NH 16
Halsey Hall	HH E201	North Hall	NH 205
Halsey Hall	HH E203	North Hall	NH 206
Halsey Hall	HH W121	North Hall	NH 208
Jefferson Building	JB 220	North Hall	NH 29
Jefferson Building	JB 324	North Hall	NH 301
Jefferson Building	JB 403	North Hall	NH 302
Jefferson Building	JB 603	North Hall	NH 316
Jefferson Building	JB 704	North Hall	NH 332
Jessup Hall	JH 219	North Hall	NH B1
Jessup Hall	JH 221	South Quad	SQ 3
Jessup Hall	JH 243	South Quad	SQ 14
Jessup Hall	JH 248	South Quad	SQ 104
Jessup Hall	JH 248A	West Lawn	WL 3241